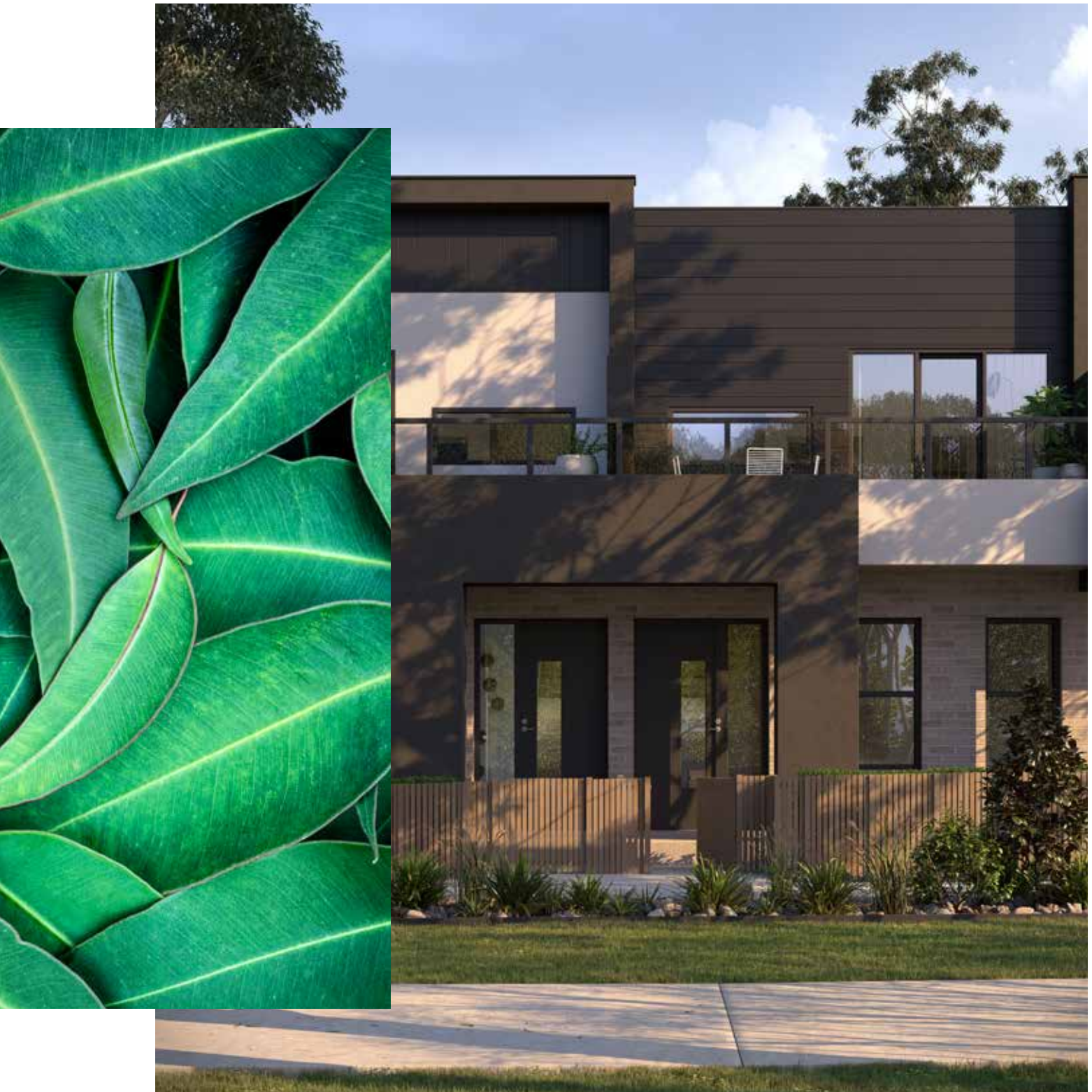


The Park

BUNDOORA



Enjoy the greener lifestyle

Development by:

Senol

Why you should invest in Bundoora

1/ Education

Bundoora has two internationally recognised tertiary institutions



3/ Healthcare

Northpark Private Hospital
Bundoora Extended Care Centre
LaTrobe Private Hospital

2/ Shopping

University Hill Shopping Centre
Highpoint Shopping Centre

4/ Proximity

Only 16km from
the CBD

5/ Infrastructure

Plenty Road Upgrades:
\$139M upgrade to regional arterial road to improve access to regional schools, employment and infrastructure.

North East Link:
\$100M for planning & pre-construction, a major additional future freeway project connecting the north and east.

Mernda Rail Extension:
\$596.7M to extend the existing Epping / South Morang line to Mernda (including three new stations) and improve capacity and efficiency in the northern corridor.

7/ Lifestyle

Low maintenance
living

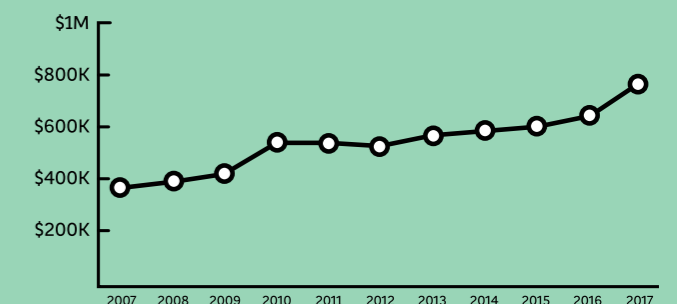
9/ Low Vacancy Rate

1.2%
High rental demand

6/ Green Spaces

Bundoora Family Park
Norris Bank Parklands
La Trobe Wildlife Sanctuary
Gresswell Forest Wildlife Rescue

8/ Capital Growth



10/ Employment

Bundoora is located in the approximate centre of a highly productive economic region that is experiencing relatively high levels of regional residential property demand and strong growth driven by greenfield development in Whittlesea and significant investment within the La Trobe National Employment & Innovation Cluster to the south of the site.

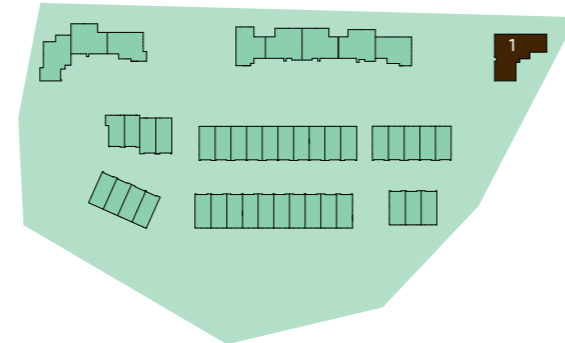


The Park

BUNDOORA

Choose from 45 well appointed townhouses amongst the natural green landscapes.





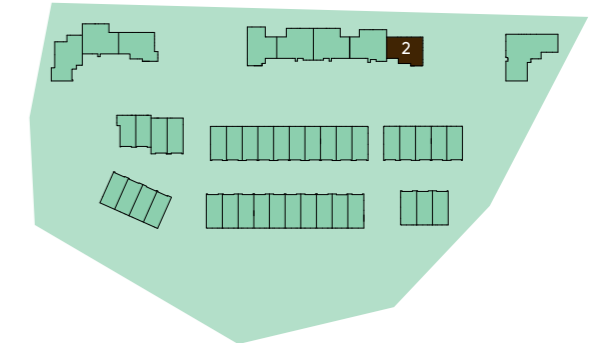
Dwelling: 1

Bedroom	3	Internal	151m ²
Bathroom	2	External	291m ²
Garage	2	Total Area	442m ²
Study	1		

Ground Floor



First Floor



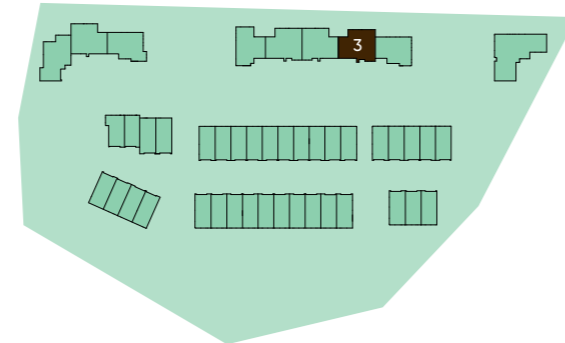
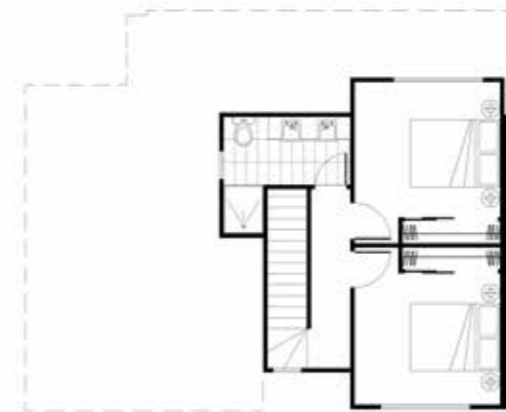
Dwelling: 2

Bedroom	3	Internal	131m ²
Bathroom	2	External	268m ²
Garage	1	Total Area	399m ²

Ground Floor



First Floor



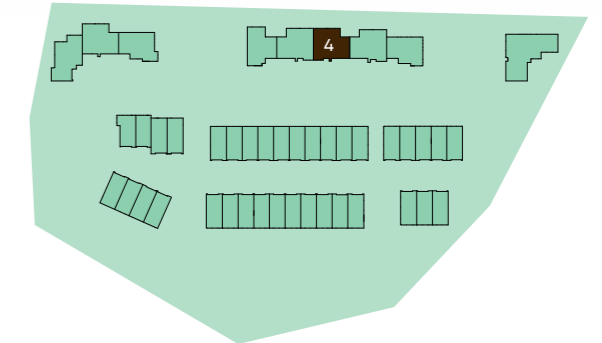
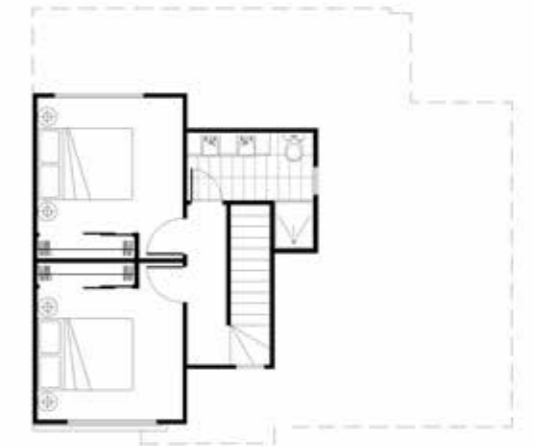
Dwelling: 3

Bedroom	3	Internal	135m ²
Bathroom	2	External	116m ²
Garage	1	Total Area	251m ²

Ground Floor



First Floor



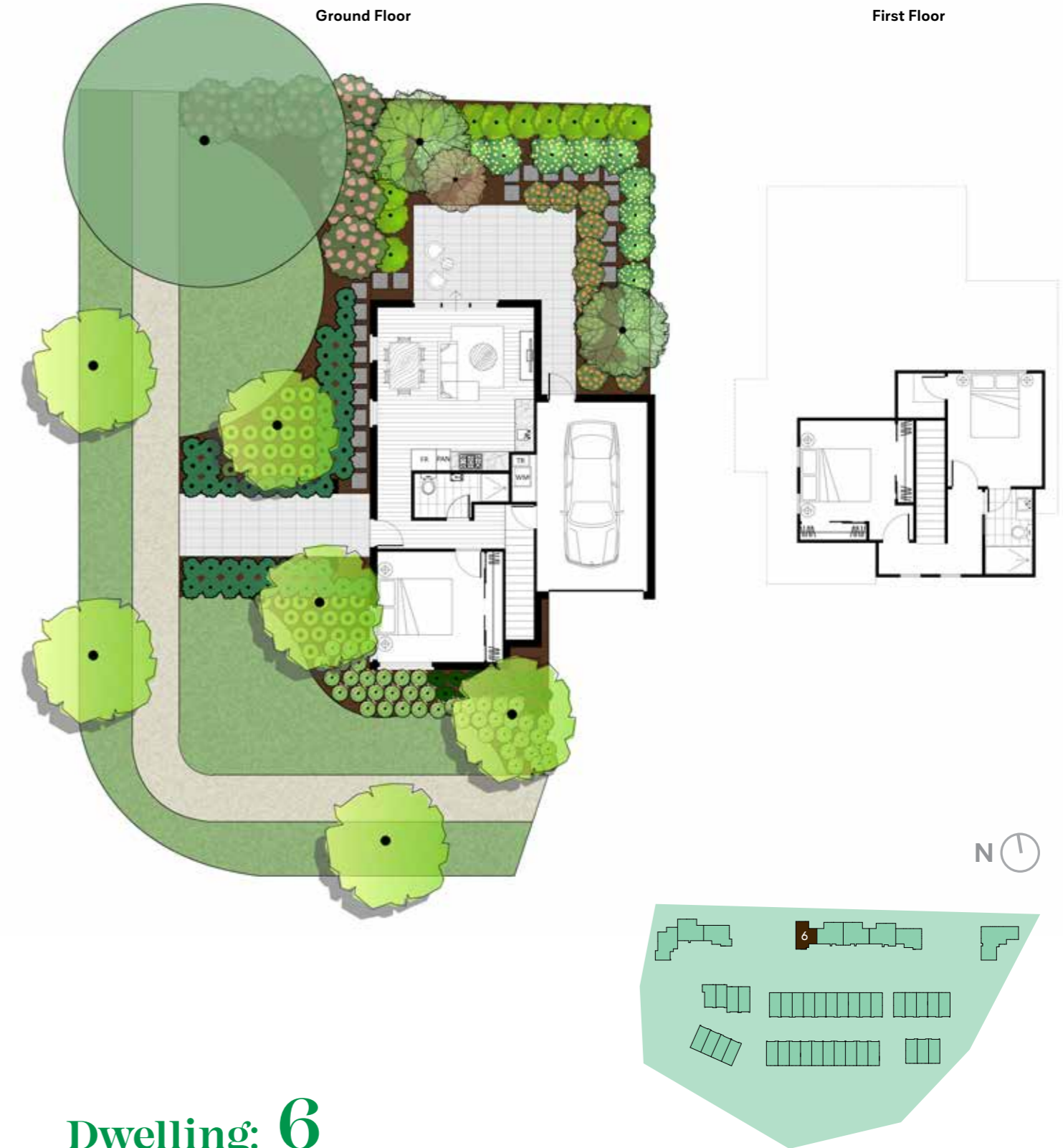
Dwelling: 4

Bedroom	3	Internal	134m ²
Bathroom	2	External	116m ²
Garage	1	Total Area	250m ²



Dwelling: 5

Bedroom	3	Internal	134m ²
Bathroom	2	External (Rear only)	119m ²
Garage	1	Total Area	253m ²

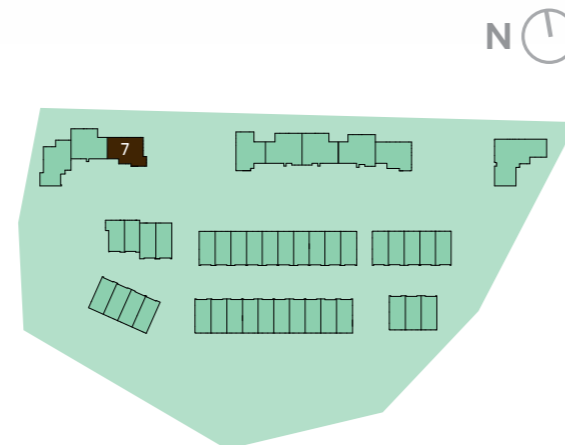
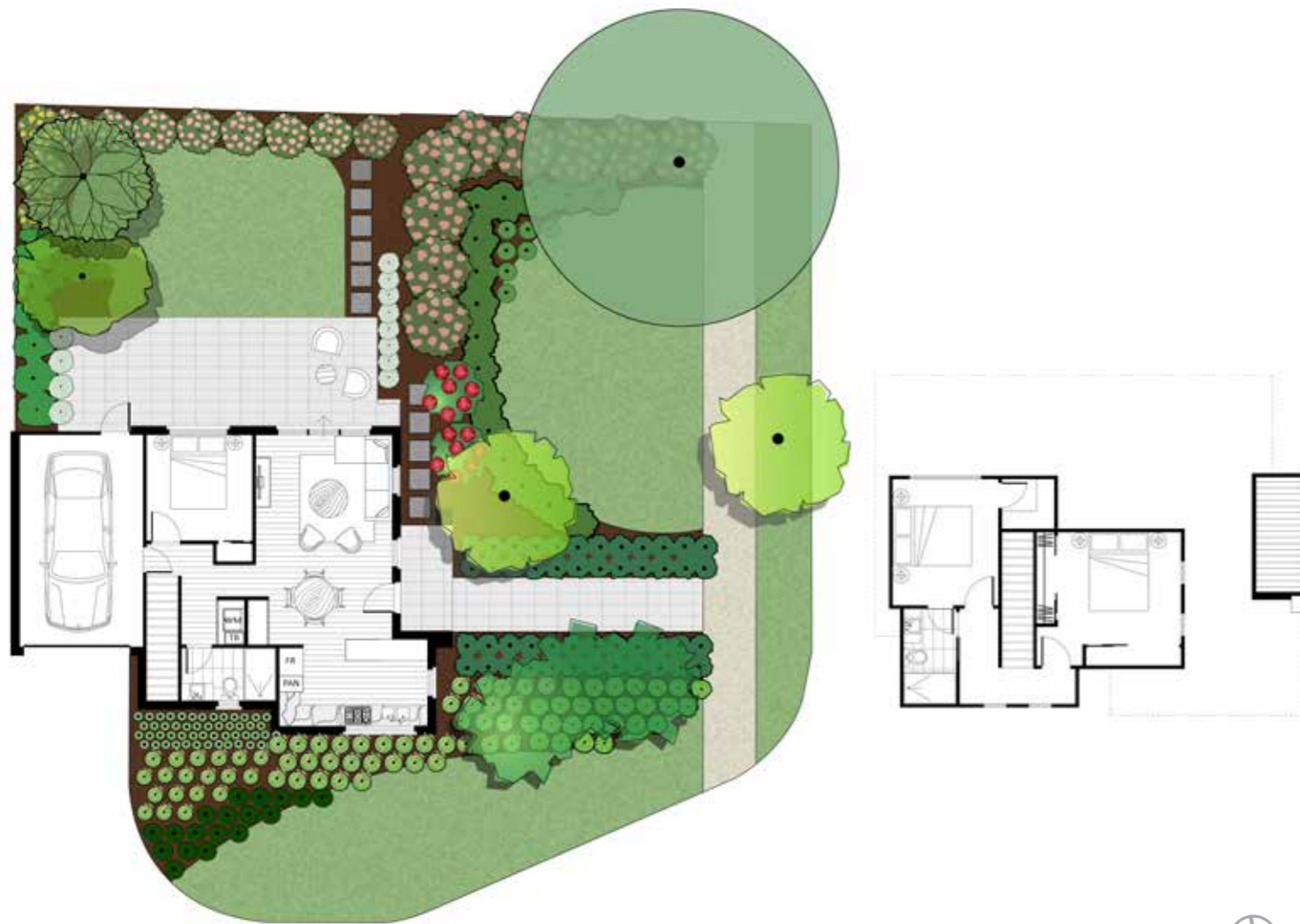


Dwelling: 6

Bedroom	3	Internal	129m ²
Bathroom	2	External	215m ²
Garage	1	Total Area	344m ²

Ground Floor

First Floor

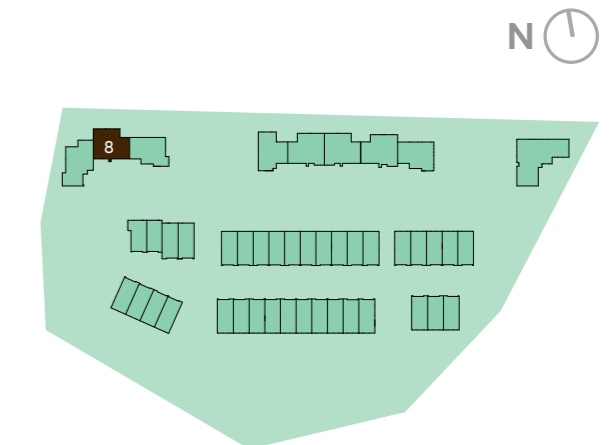


Dwelling: 7

Bedroom	3	Internal	133m ²
Bathroom	2	External	312m ²
Garage	1	Total Area	445m ²

Ground Floor

First Floor



Dwelling: 8

Bedroom	3	Internal	134m ²
Bathroom	2	External	125m ²
Garage	1	Total Area	259m ²

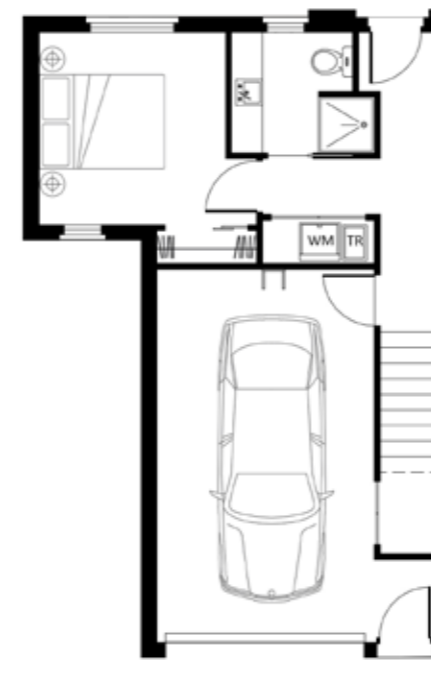


Dwelling: 9

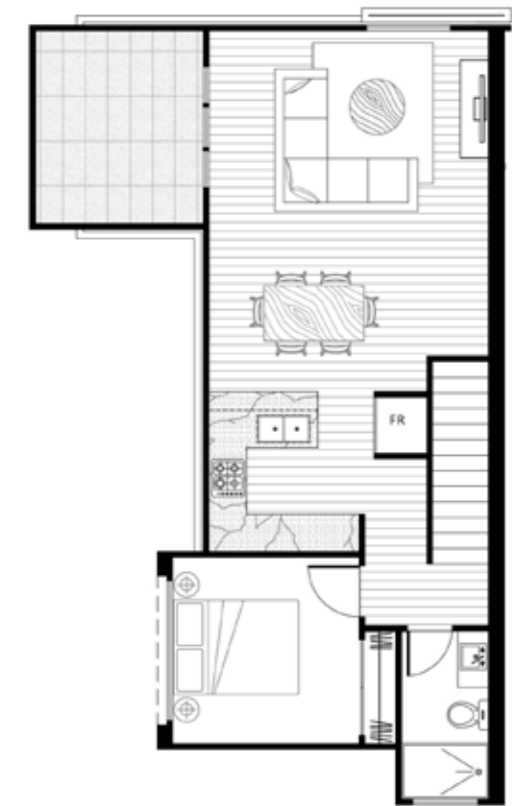
Bedroom	2	Internal	99m ²
Bathroom	1	External	111m ²
Garage	1	Total Area	210m ²

The information, images and illustrations in this document are indicative only and may be subject to change. Senol and associated entities and their agents do not warrant the accuracy of the information, images or illustrations and do not accept liability in relation to any loss or damages for any error or discrepancy in the content of this document. The items of furniture and furnishings shown are not included in the property and are depicted for the purposes of pictorial assistance only.

Ground Floor



First Floor

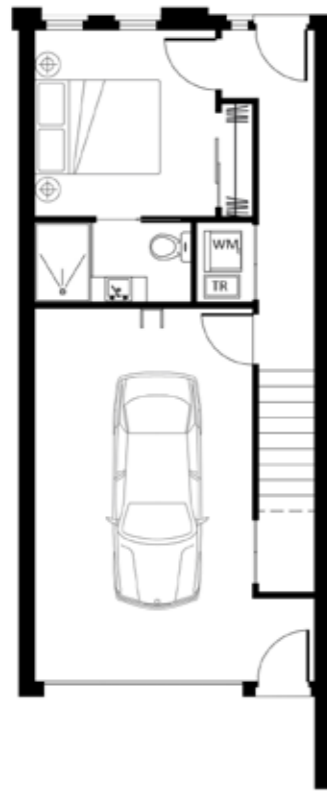


Dwelling: 10

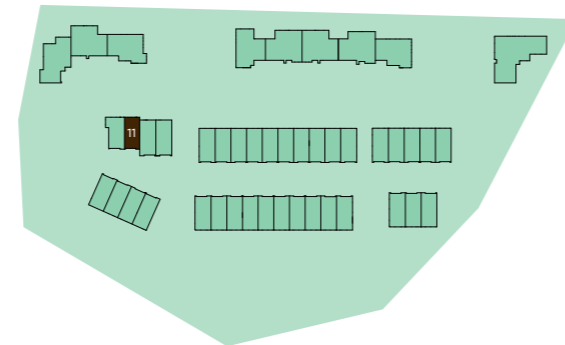
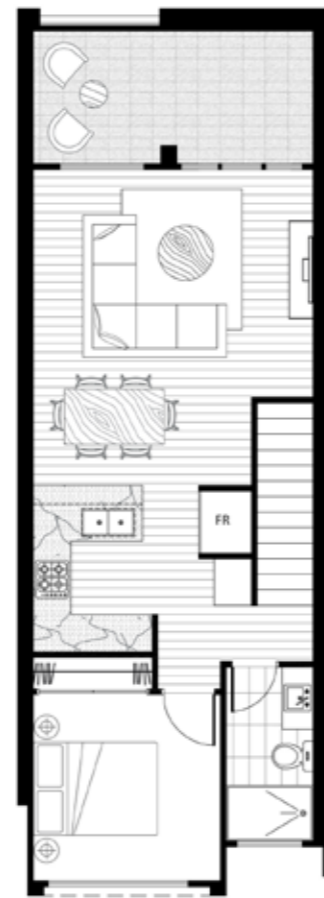
Bedroom	2	Internal	114m ²
Bathroom	2	External	26m ²
Garage	1	Total Area	140m ²
Balcony	1		

The information, images and illustrations in this document are indicative only and may be subject to change. Senol and associated entities and their agents do not warrant the accuracy of the information, images or illustrations and do not accept liability in relation to any loss or damages for any error or discrepancy in the content of this document. The items of furniture and furnishings shown are not included in the property and are depicted for the purposes of pictorial assistance only.

Ground Floor



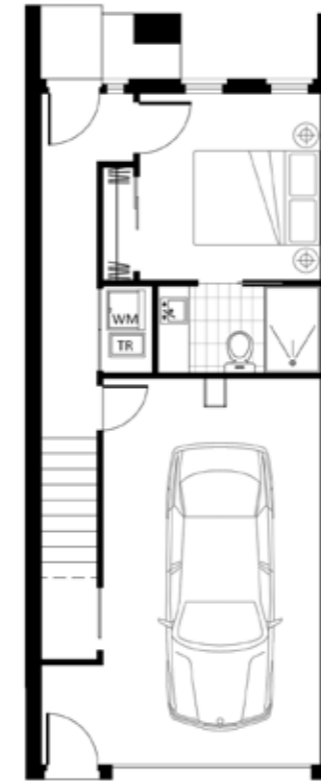
First Floor



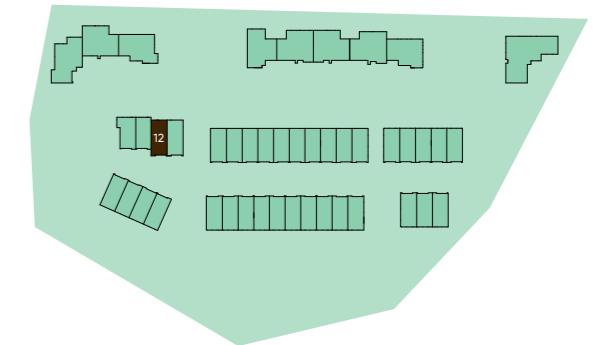
Dwelling: 11

Bedroom	2	Internal	105m ²
Bathroom	2	External	21m ²
Garage	1	Total Area	126m ²
Balcony	1		

Ground Floor



First Floor

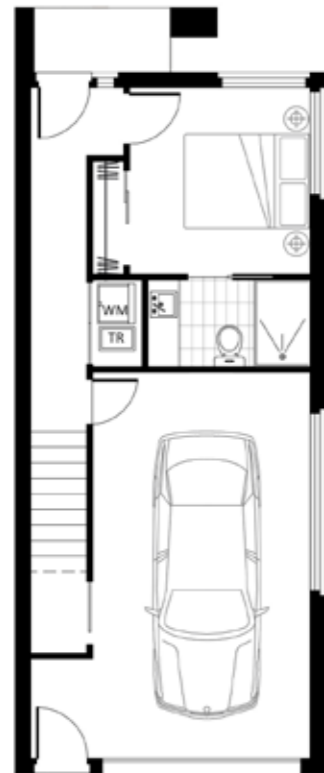


Dwelling: 12

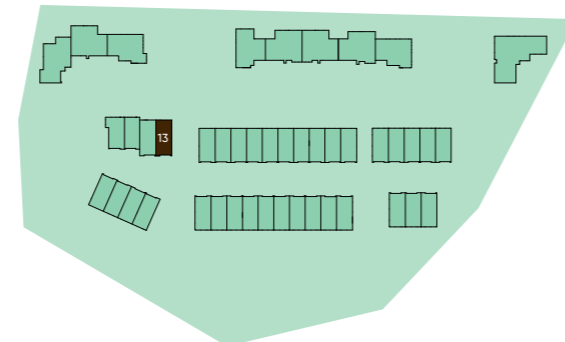
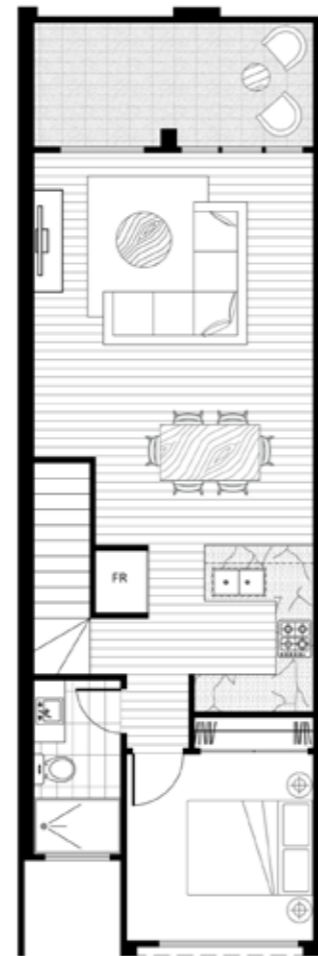
Bedroom	2	Internal	111m ²
Bathroom	2	External	26m ²
Garage	1	Total Area	137m ²
Balcony	1		



Ground Floor



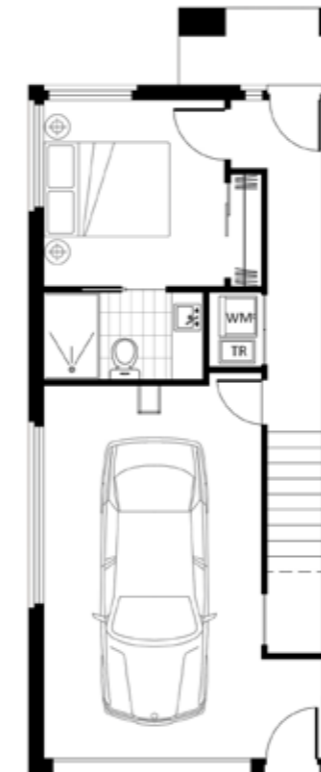
First Floor



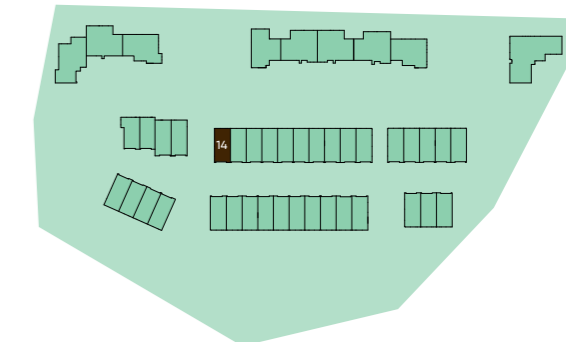
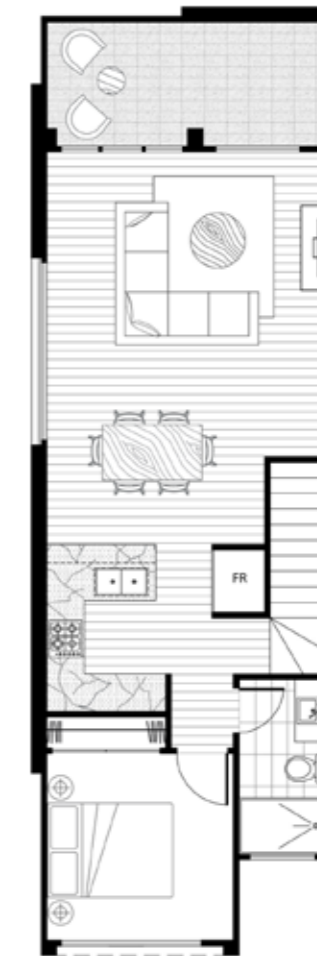
Dwelling: 13

Bedroom	2	Internal	113m ²
Bathroom	2	External	27m ²
Garage	1	Total Area	140m ²
Balcony	1		

Ground Floor



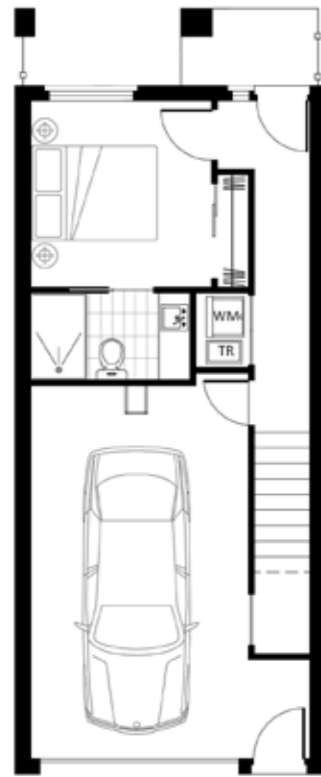
First Floor



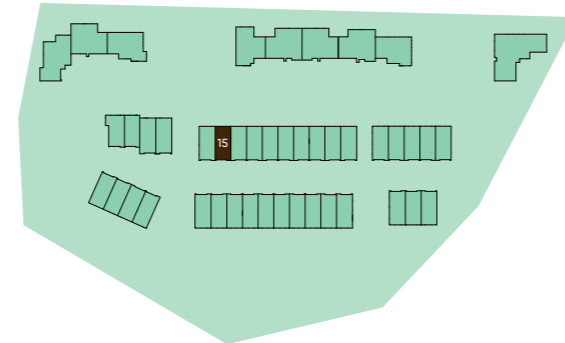
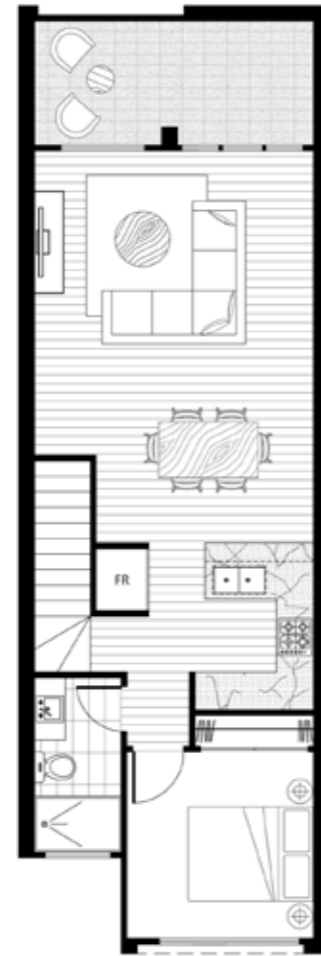
Dwelling: 14

Bedroom	2	Internal	111m ²
Bathroom	2	External	24m ²
Garage	1	Total Area	135m ²
Balcony	1		

Ground Floor



First Floor



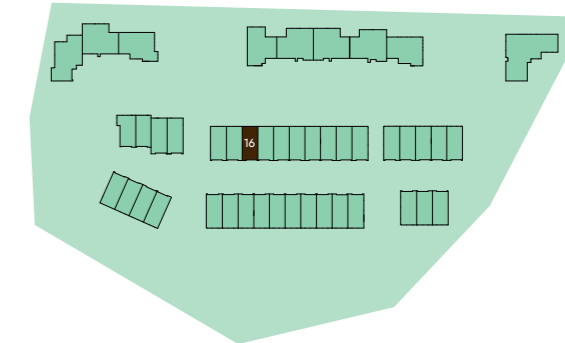
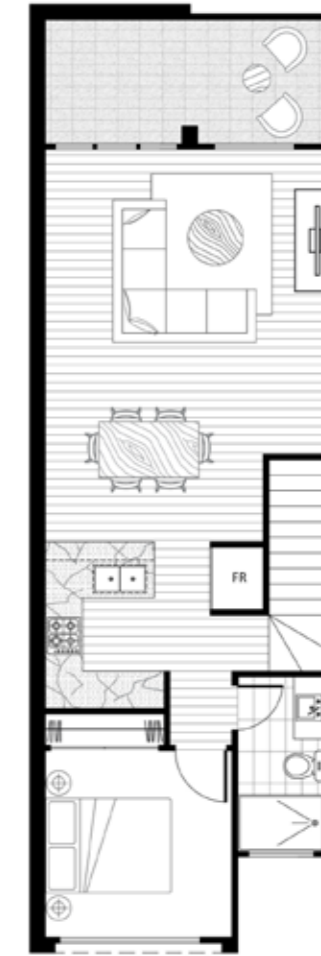
Dwelling: 15

Bedroom	2	Internal	110m ²
Bathroom	2	External	24m ²
Garage	1	Total Area	134m ²
Balcony	1		

Ground Floor



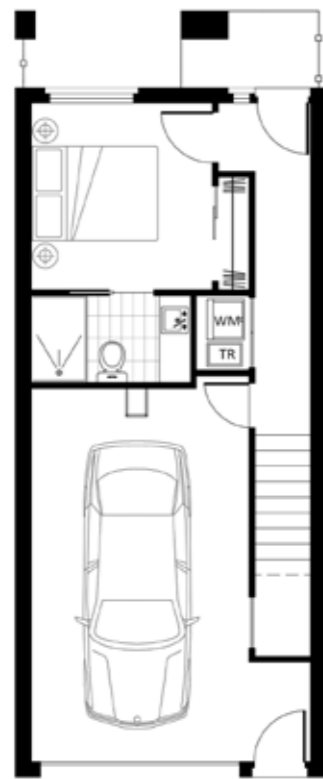
First Floor



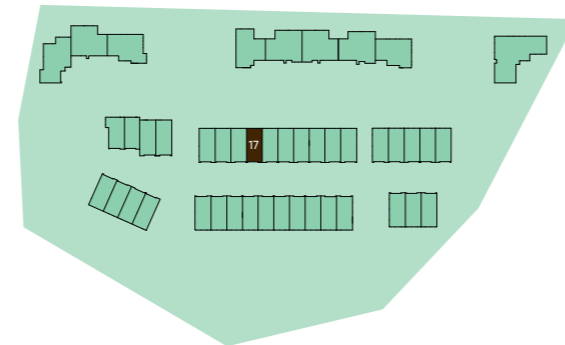
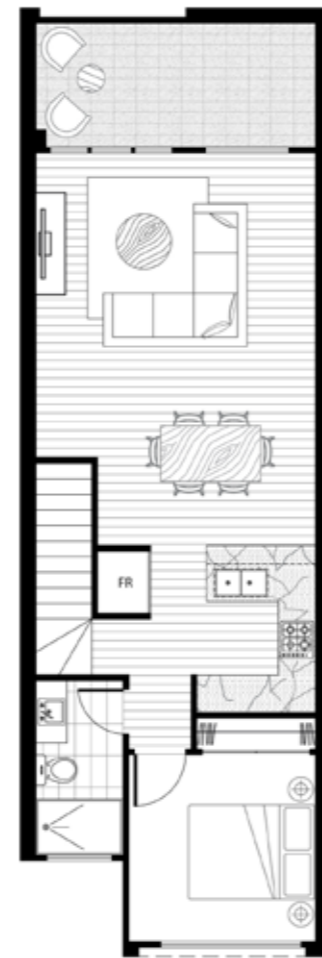
Dwelling: 16

Bedroom	2	Internal	110m ²
Bathroom	2	External	24m ²
Garage	1	Total Area	134m ²
Balcony	1		

Ground Floor



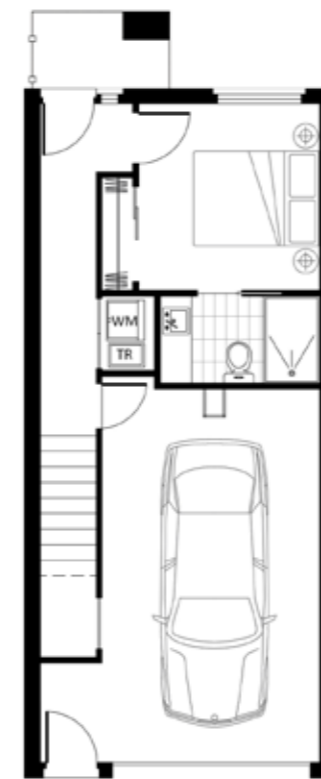
First Floor



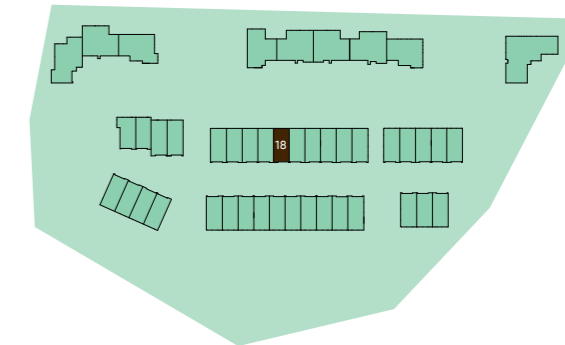
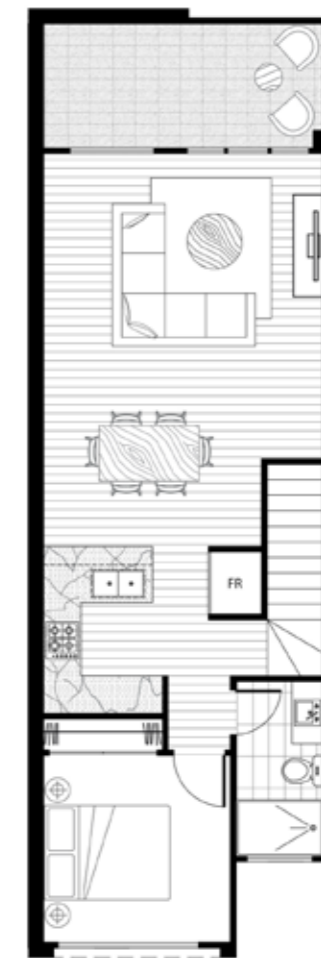
Dwelling: 17

Bedroom	2	Internal	110m ²
Bathroom	2	External	24m ²
Garage	1	Total Area	134m ²
Balcony	1		

Ground Floor



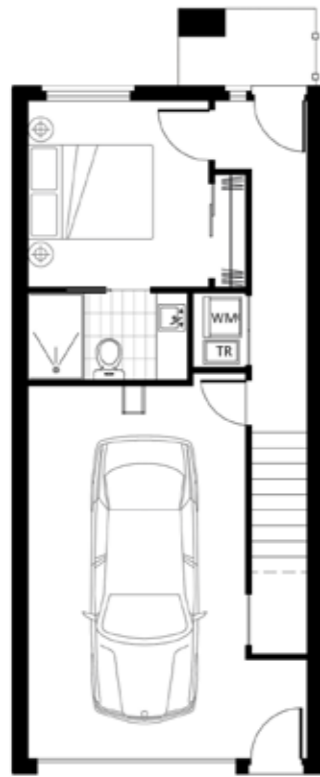
First Floor



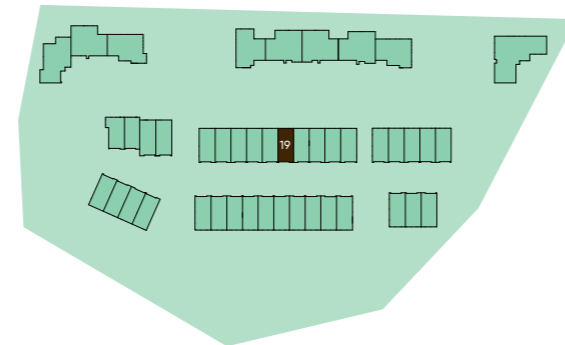
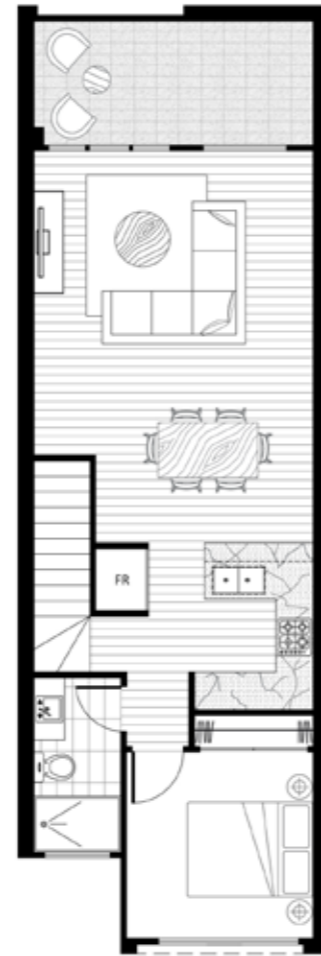
Dwelling: 18

Bedroom	2	Internal	110m ²
Bathroom	2	External	24m ²
Garage	1	Total Area	134m ²
Balcony	1		

Ground Floor



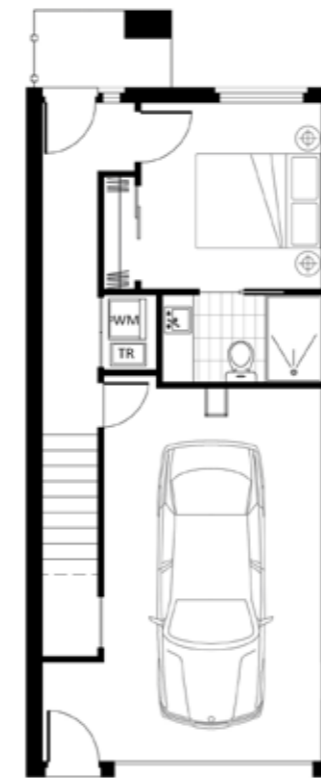
First Floor



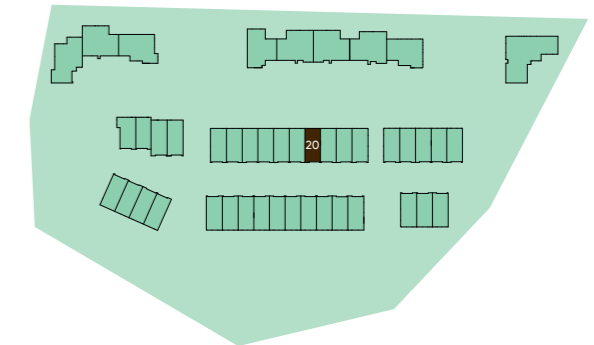
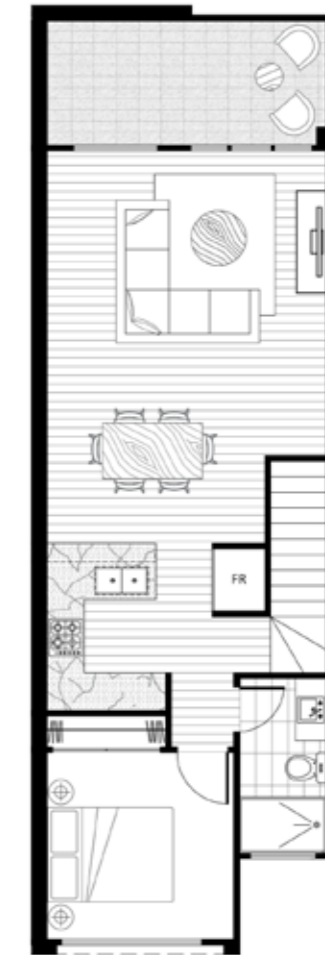
Dwelling: 19

Bedroom	2	Internal	110m ²
Bathroom	2	External	24m ²
Garage	1	Total Area	134m ²
Balcony	1		

Ground Floor



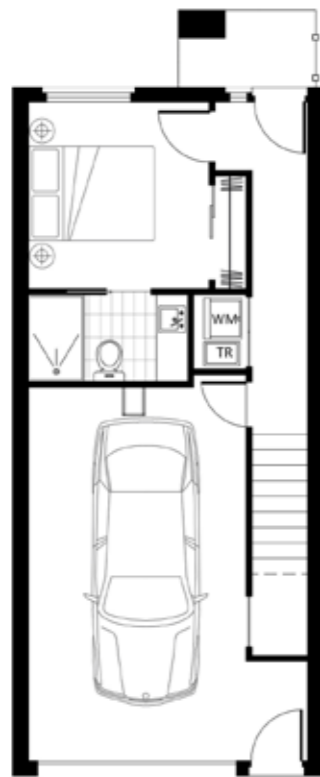
First Floor



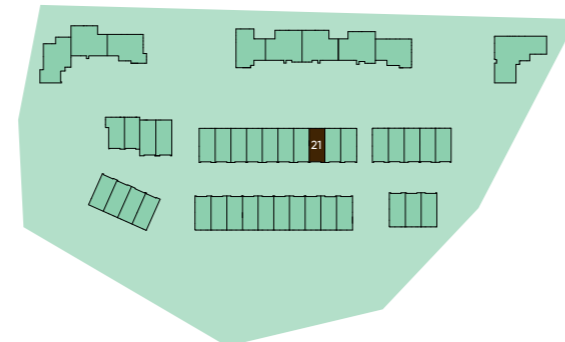
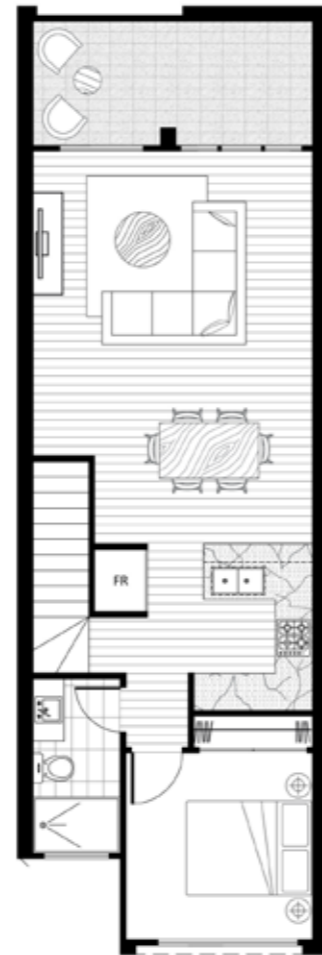
Dwelling: 20

Bedroom	2	Internal	110m ²
Bathroom	2	External	24m ²
Garage	1	Total Area	134m ²
Balcony	1		

Ground Floor



First Floor



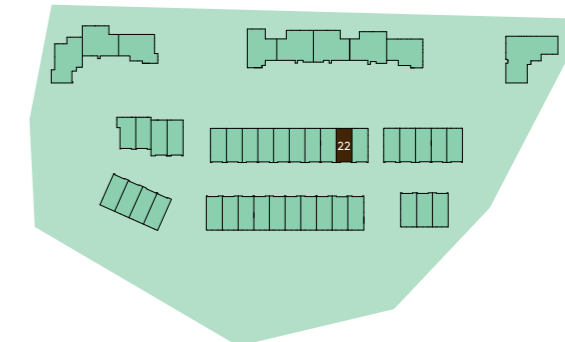
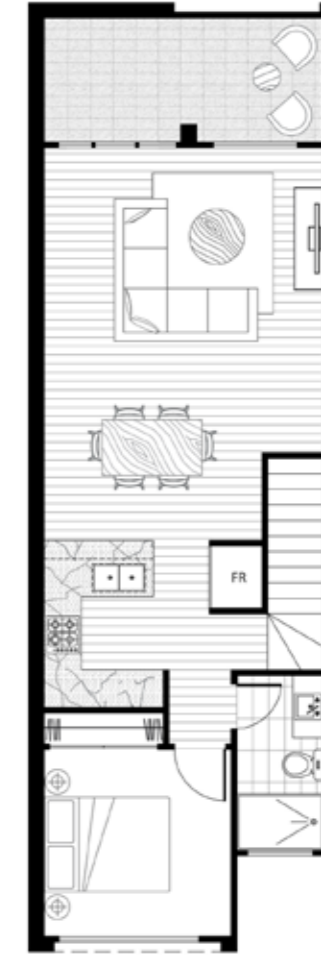
Dwelling: 21

Bedroom	2	Internal	110m ²
Bathroom	2	External	24m ²
Garage	1	Total Area	134m ²
Balcony	1		

Ground Floor



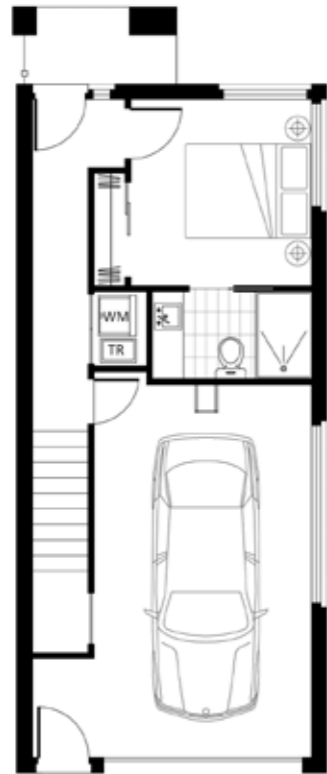
First Floor



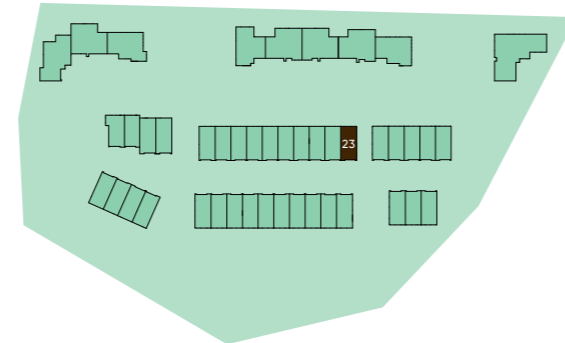
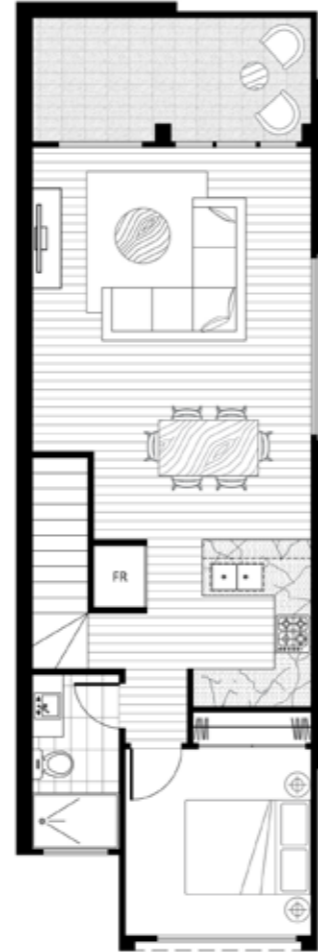
Dwelling: 22

Bedroom	2	Internal	110m ²
Bathroom	2	External	24m ²
Garage	1	Total Area	134m ²
Balcony	1		

Ground Floor



First Floor



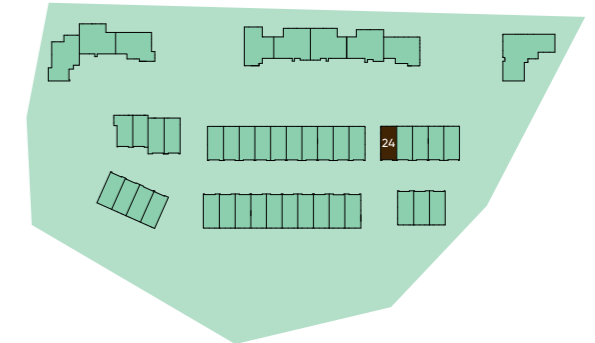
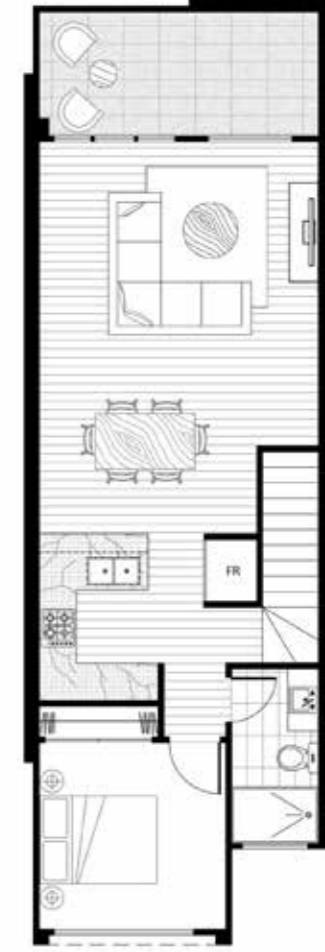
Dwelling: 23

Bedroom	2	Internal	111m ²
Bathroom	2	External	24m ²
Garage	1	Total Area	135m ²
Balcony	1		

Ground Floor



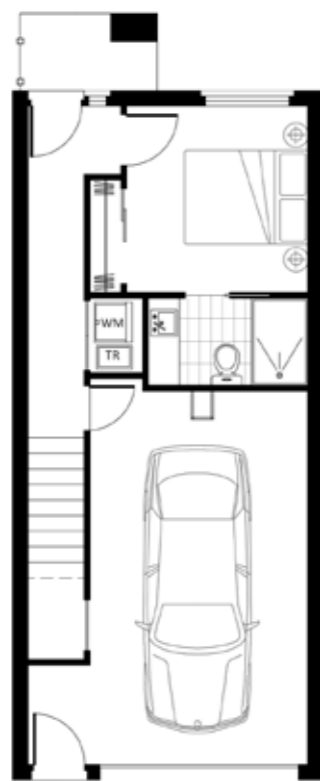
First Floor



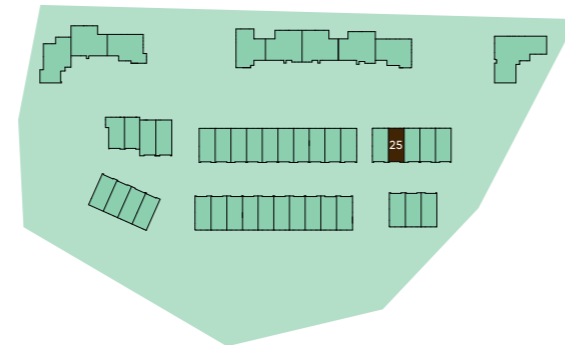
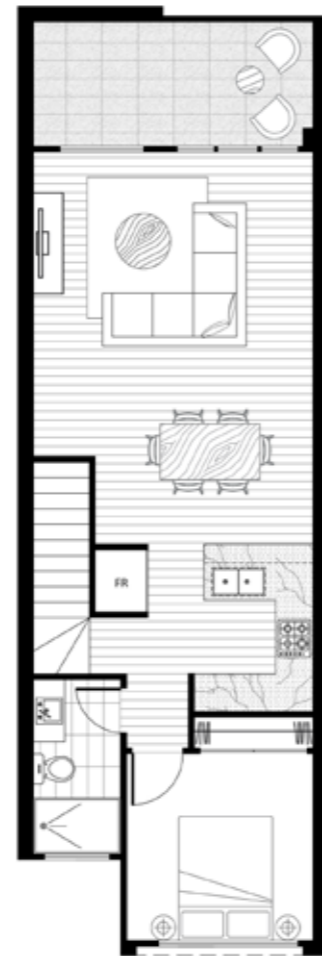
Dwelling: 24

Bedroom	2	Internal	112m ²
Bathroom	2	External	24m ²
Garage	1	Total Area	136m ²
Balcony	1		

Ground Floor



First Floor



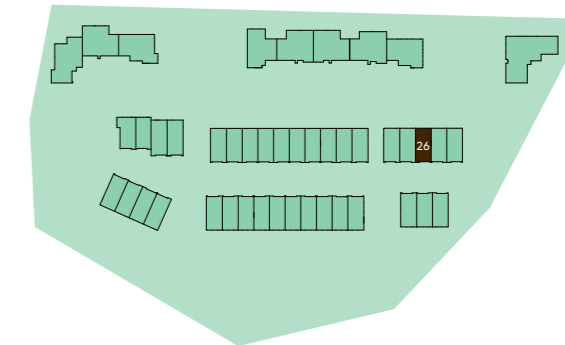
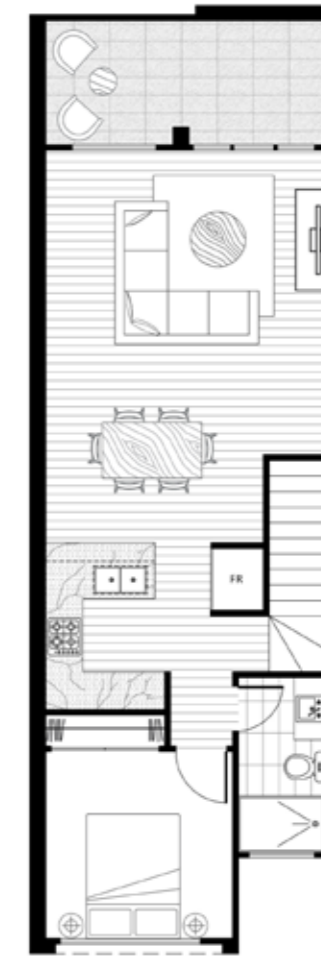
Dwelling: 25

Bedroom	2	Internal	110m ²
Bathroom	2	External	24m ²
Garage	1	Total Area	134m ²
Balcony	1		

Ground Floor



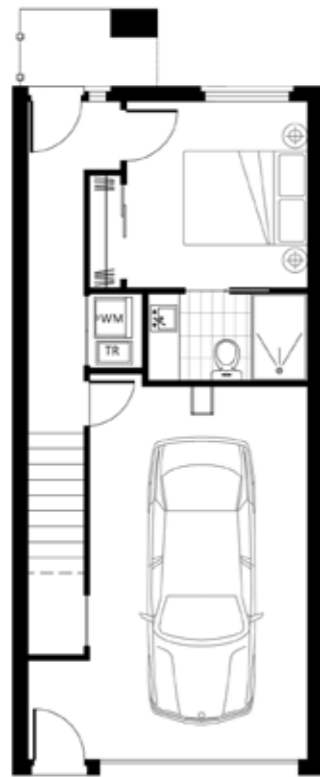
First Floor



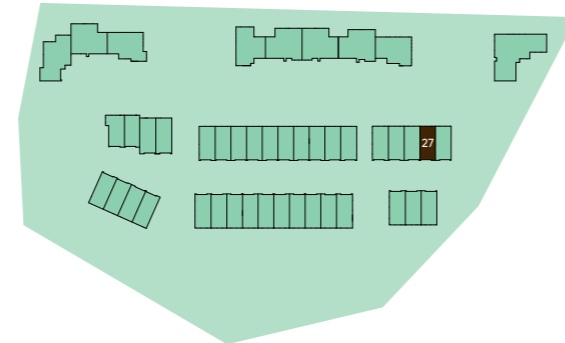
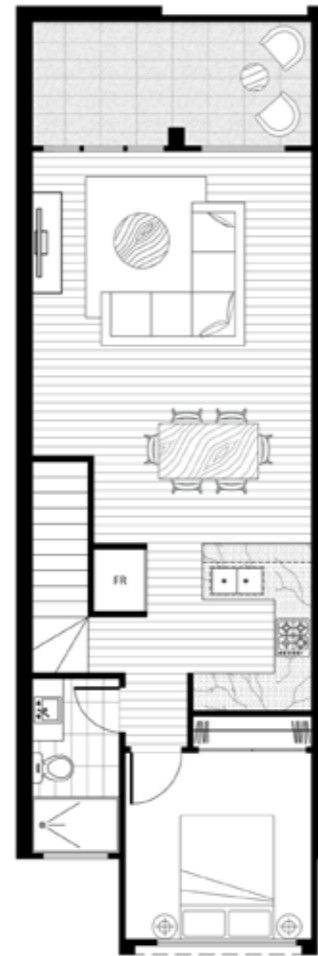
Dwelling: 26

Bedroom	2	Internal	110m ²
Bathroom	2	External	24m ²
Garage	1	Total Area	134m ²
Balcony	1		

Ground Floor



First Floor



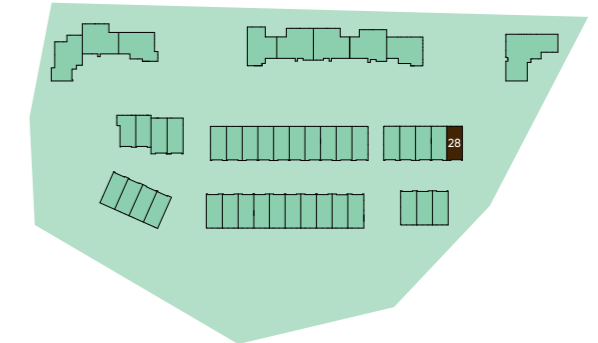
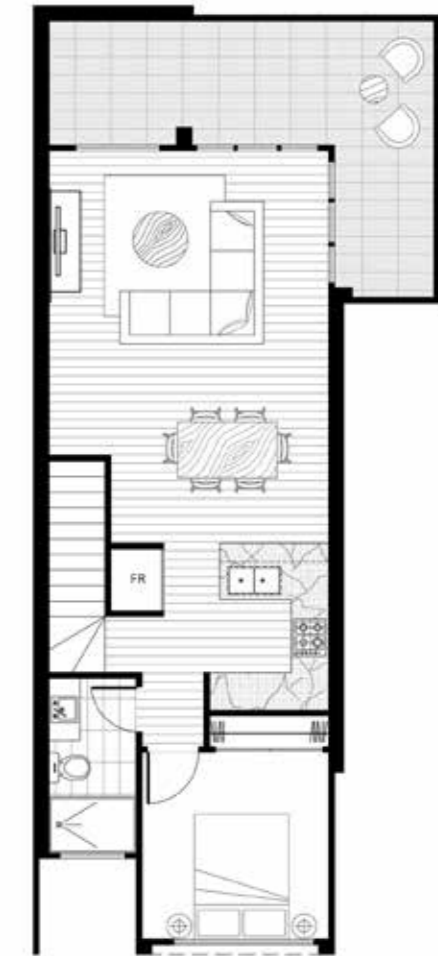
Dwelling: 27

Bedroom	2	Internal	110m ²
Bathroom	2	External	24m ²
Garage	1	Total Area	134m ²
Balcony	1		

Ground Floor



First Floor

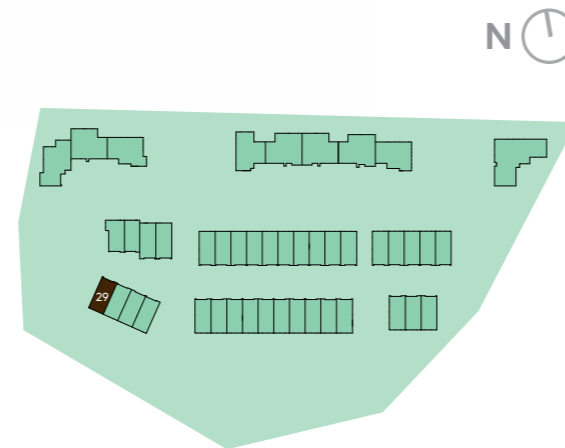


Dwelling: 28

Bedroom	2	Internal	112m ²
Bathroom	2	External	24m ²
Garage	1	Total Area	136m ²
Balcony	1		

Ground Floor

First Floor

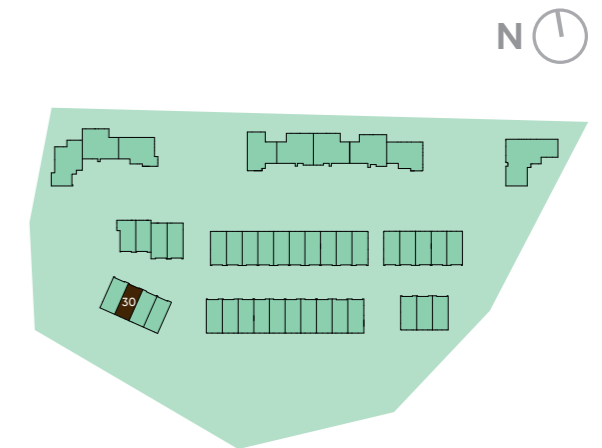


Dwelling: 29

Bedroom	2	Internal	112m ²
Bathroom	2	External	25m ²
Garage	1	Total Area	137m ²
Balcony	1		

Ground Floor

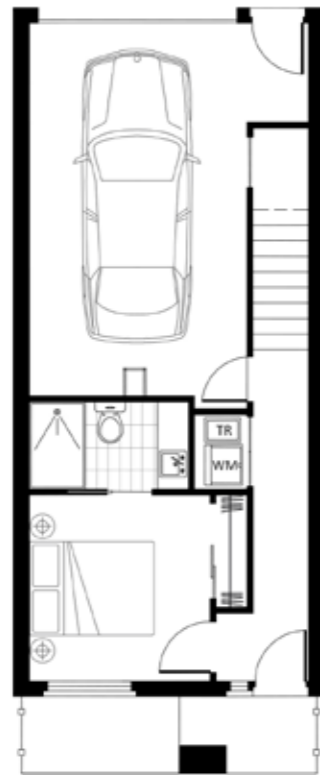
First Floor



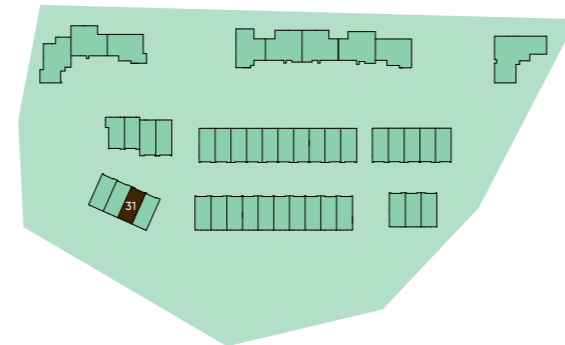
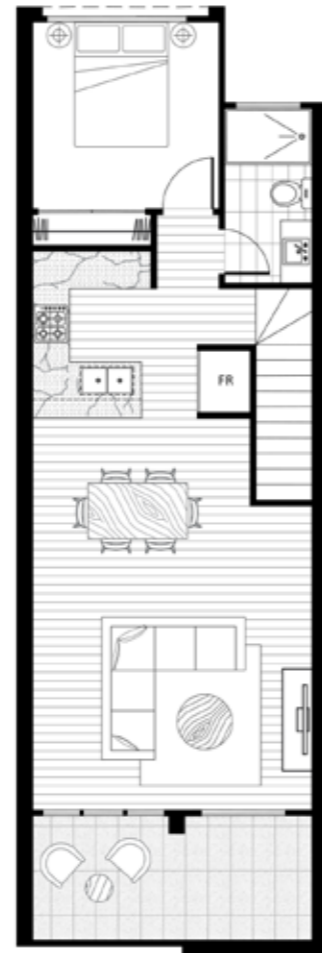
Dwelling: 30

Bedroom	2	Internal	110m ²
Bathroom	2	External	17m ²
Garage	1	Total Area	127m ²
Balcony	1		

Ground Floor



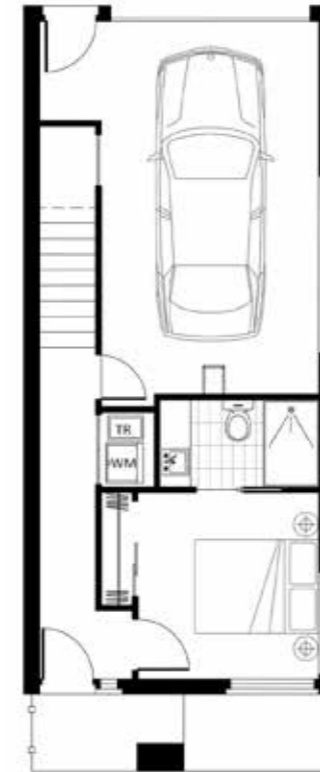
First Floor



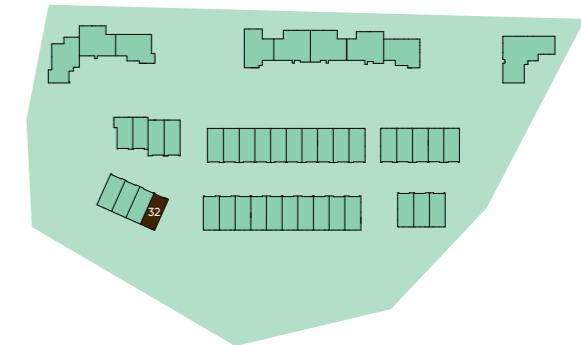
Dwelling: 31

Bedroom	2	Internal	110m ²
Bathroom	2	External	17m ²
Garage	1	Total Area	127m ²
Balcony	1		

Ground Floor



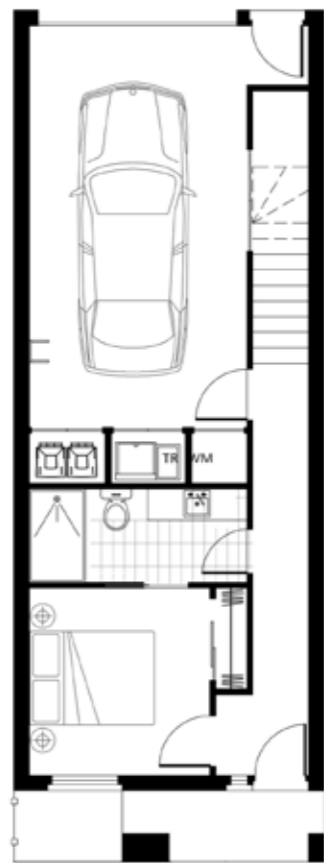
First Floor



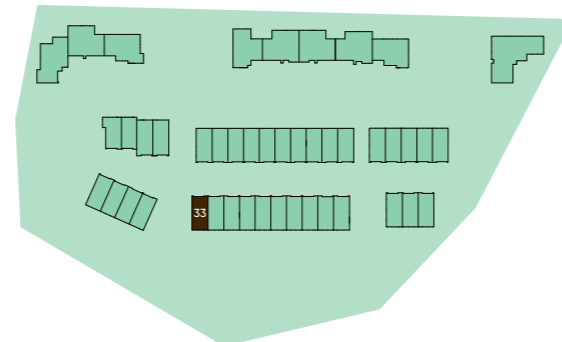
Dwelling: 32

Bedroom	2	Internal	112m ²
Bathroom	2	External	25m ²
Garage	1	Total Area	137m ²
Balcony	1		

Ground Floor



First Floor



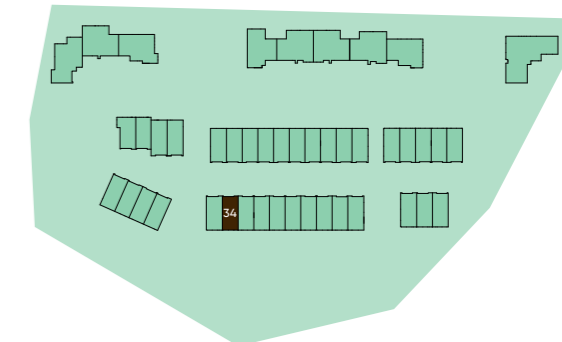
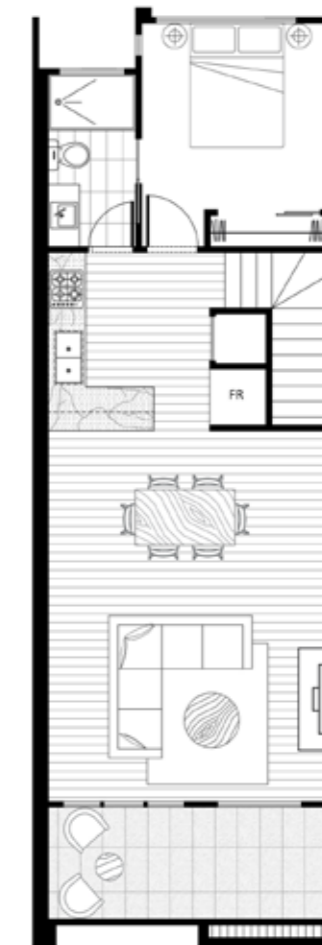
Dwelling: 33

Bedroom	2	Internal	119m ²
Bathroom	2	External	20m ²
Garage	1	Total Area	139m ²
Balcony	1		

Ground Floor



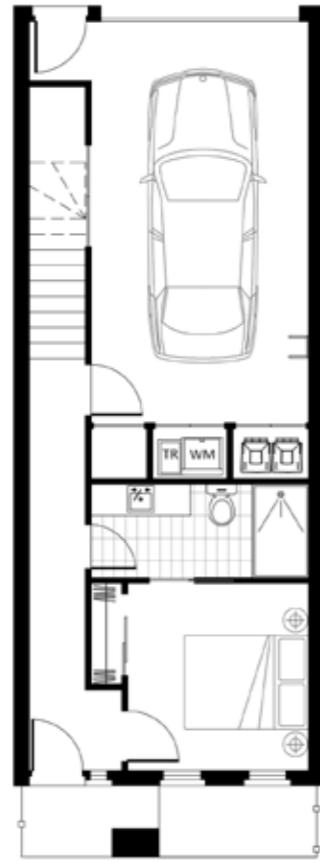
First Floor



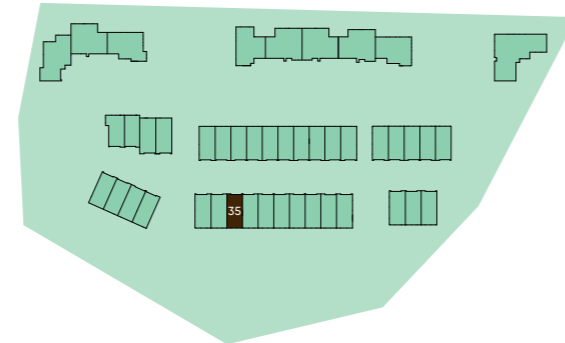
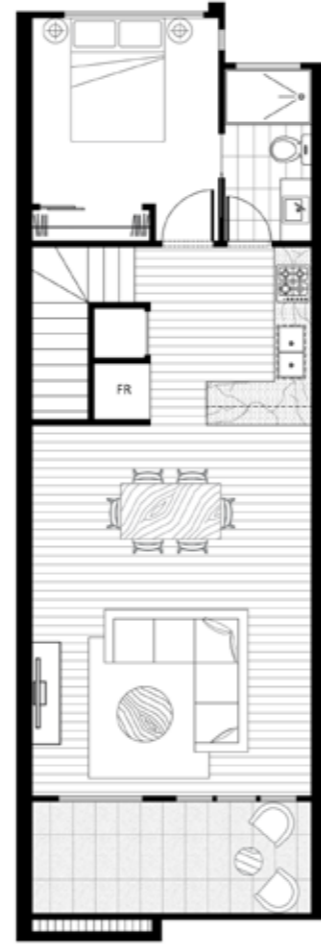
Dwelling: 34

Bedroom	2	Internal	117m ²
Bathroom	2	External	19m ²
Garage	1	Total Area	136m ²
Balcony	1		

Ground Floor



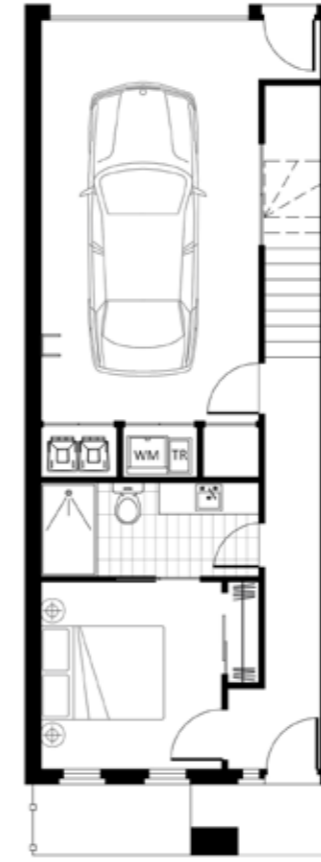
First Floor



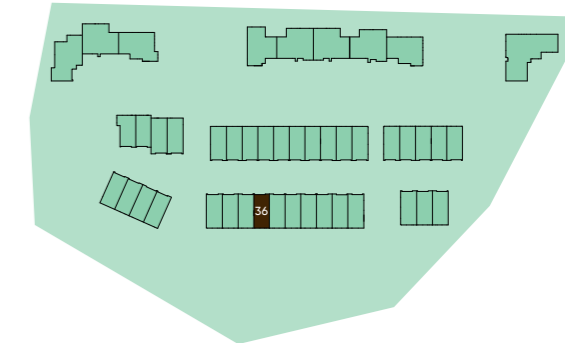
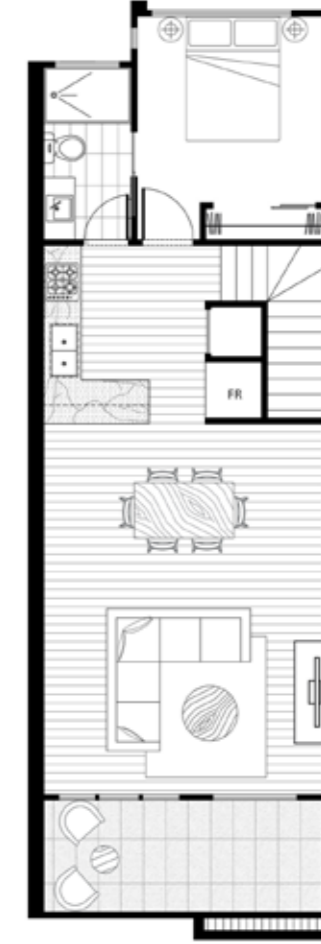
Dwelling: 35

Bedroom	2	Internal	117m ²
Bathroom	2	External	19m ²
Garage	1	Total Area	136m ²
Balcony	1		

Ground Floor



First Floor



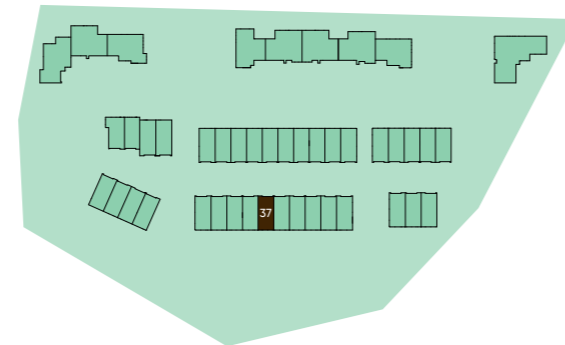
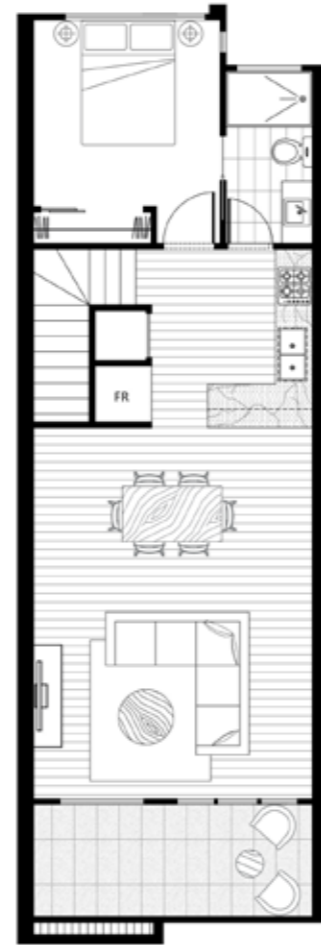
Dwelling: 36

Bedroom	2	Internal	117m ²
Bathroom	2	External	19m ²
Garage	1	Total Area	136m ²
Balcony	1		

Ground Floor



First Floor



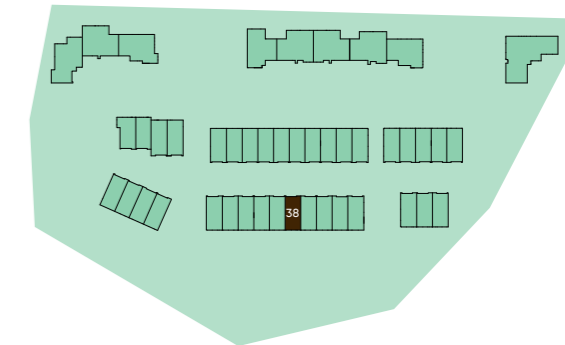
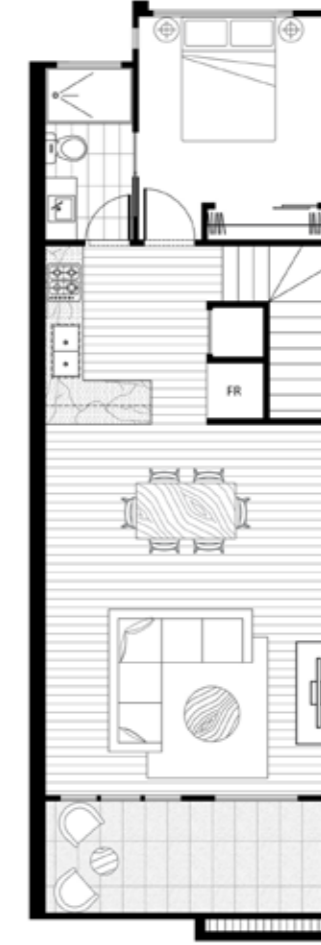
Dwelling: 37

Bedroom	2	Internal	117m ²
Bathroom	2	External	19m ²
Garage	1	Total Area	136m ²
Balcony	1		

Ground Floor



First Floor

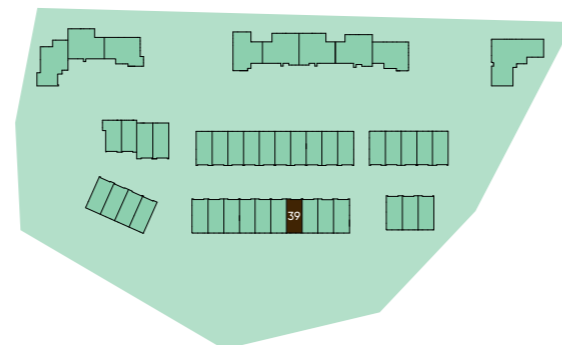


Dwelling: 38

Bedroom	2	Internal	117m ²
Bathroom	2	External	19m ²
Garage	1	Total Area	136m ²
Balcony	1		

Ground Floor

First Floor

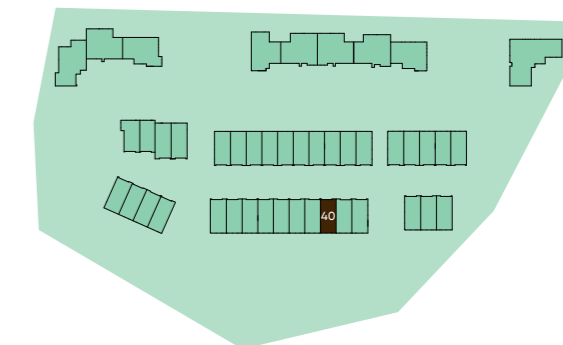


Dwelling: 39

Bedroom	2	Internal	117m ²
Bathroom	2	External	19m ²
Garage	1	Total Area	136m ²
Balcony	1		

Ground Floor

First Floor

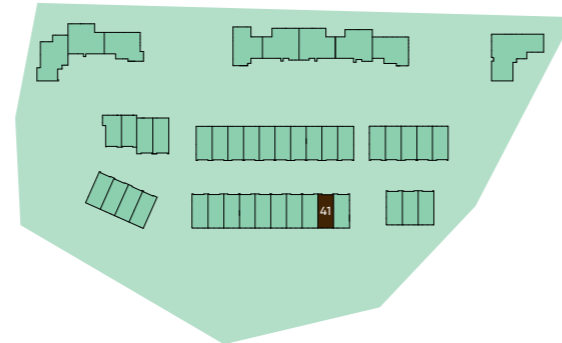


Dwelling: 40

Bedroom	2	Internal	117m ²
Bathroom	2	External	19m ²
Garage	1	Total Area	136m ²
Balcony	1		

Ground Floor

First Floor

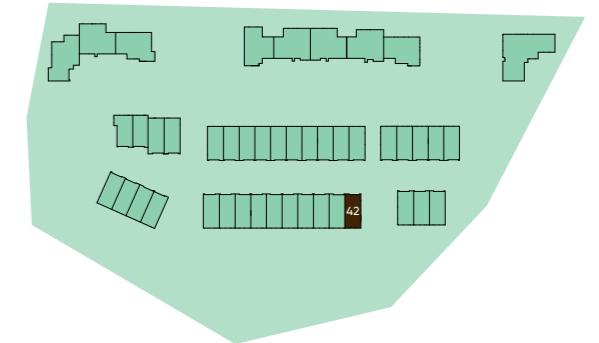


Dwelling: 41

Bedroom	2	Internal	117m ²
Bathroom	2	External	19m ²
Garage	1	Total Area	136m ²
Balcony	1		

Ground Floor

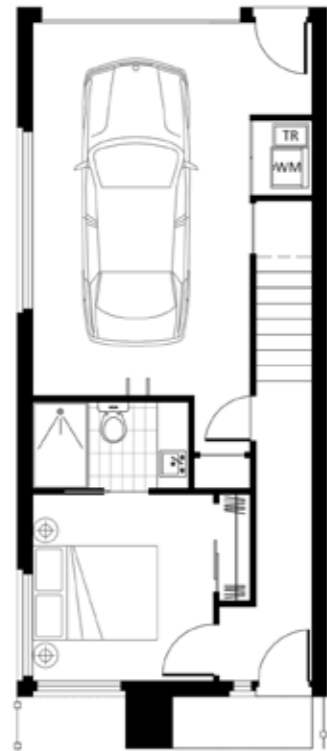
First Floor



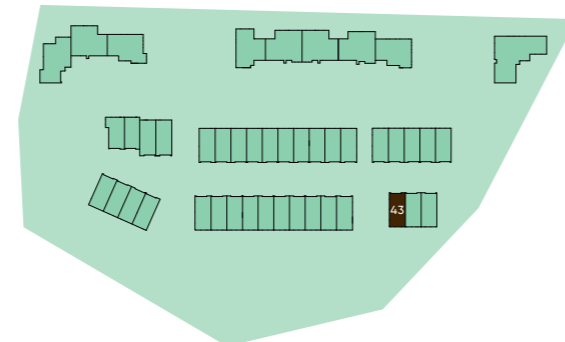
Dwelling: 42

Bedroom	2	Internal	119m ²
Bathroom	2	External	20m ²
Garage	1	Total Area	139m ²
Balcony	1		

Ground Floor



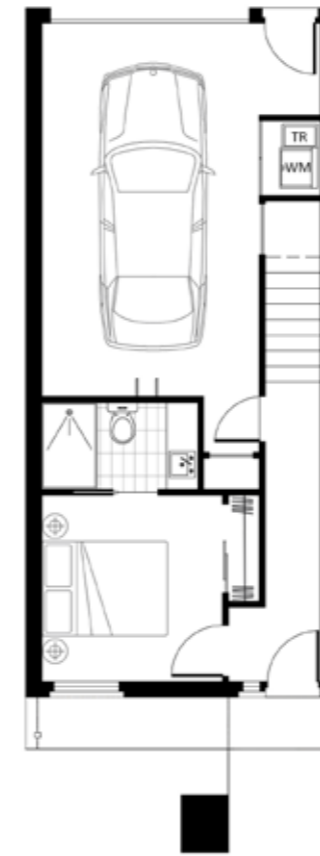
First Floor



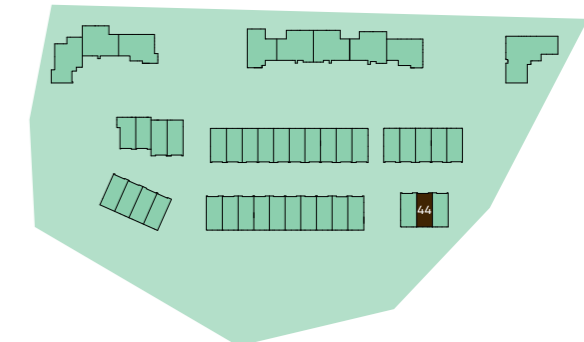
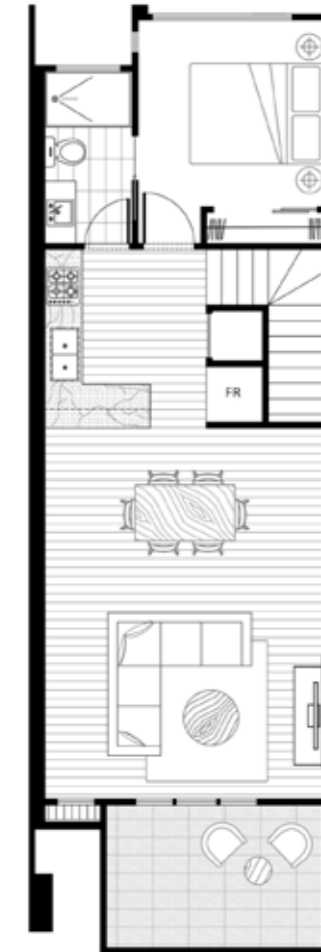
Dwelling: 43

Bedroom	2	Internal	112m ²
Bathroom	2	External	24m ²
Garage	1	Total Area	136m ²
Balcony	1		

Ground Floor



First Floor



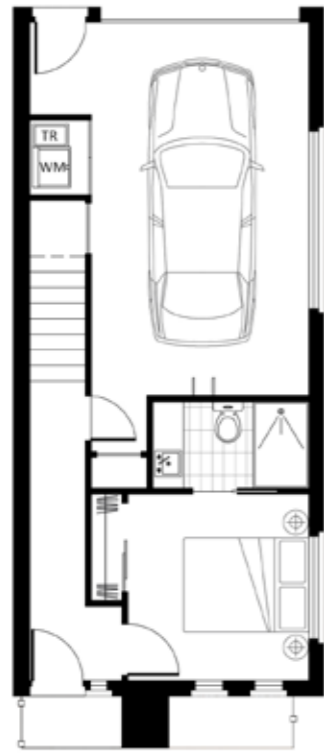
Dwelling: 44

Bedroom	2	Internal	111m ²
Bathroom	2	External	23m ²
Garage	1	Total Area	134m ²
Balcony	1		

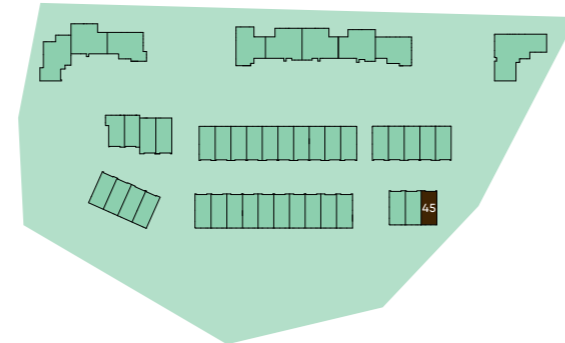
The Park

BUNDOORA

Ground Floor



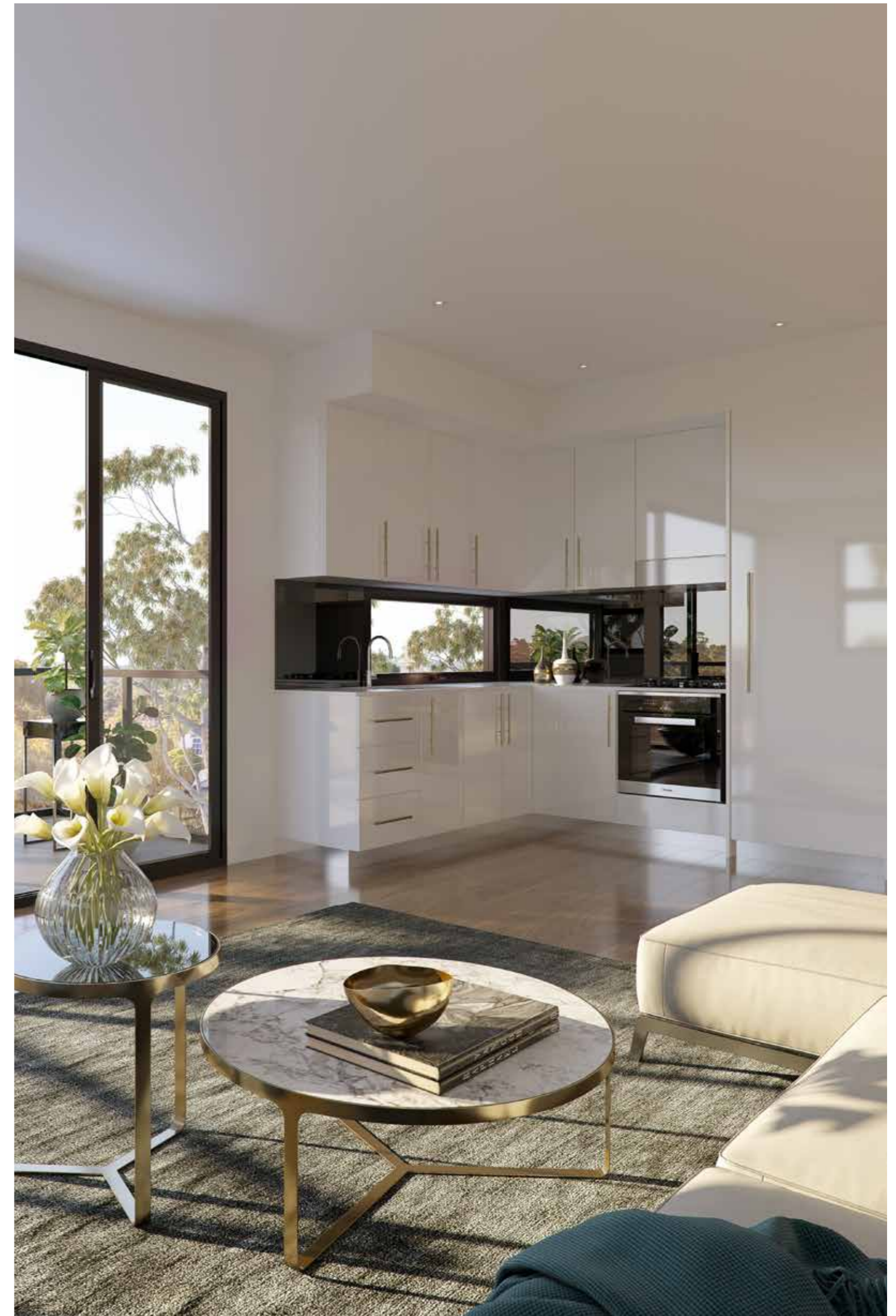
First Floor



Dwelling: 45

Bedroom	2	Internal	112m ²
Bathroom	2	External	20m ²
Garage	1	Total Area	132m ²
Balcony	1		

The information, images and illustrations in this document are indicative only and may be subject to change. Senol and associated entities and their agents do not warrant the accuracy of the information, images or illustrations and do not accept liability in relation to any loss or damages for any error or discrepancy in the content of this document. The items of furniture and furnishings shown are not included in the property and are depicted for the purposes of pictorial assistance only.



The Team

The Developer

Senol Property is a boutique property development agency specialising in turnkey approaches to properties. Our vision is to build communities, homes and long-lasting, timeless designs. With a completely dedicated in-house team, your project has all hands on deck.

Established over 25 years ago, Senol specialises in high quality commercial and residential properties, with eyes on the whole project. Our passionate team bring together creative envisioning, practical building design and exceptional quality construction to turn concepts into constructs.

The logo for Senol, featuring the word "Senol" in a bold, green, sans-serif font.

The Architect

Time Architects are committed to producing innovative, cutting edge architecture through design excellence. Their experience spans across low to high density developments, from single storey properties through to estate and subdivision development.

The team accepts the challenges associated with making projects a reality, by working designs through a process of rethinking and collaboration.



Development by:

Senol