

A close-up photograph of a green leaf, showing the intricate network of veins. The veins are a lighter shade of green than the leaf itself, creating a complex, branching pattern. The lighting is soft, highlighting the texture and depth of the leaf's structure.

14

Tranmere
Avenue
Carnegie

Experience a vibrant urban lifestyle in the cosmopolitan south-east. Embrace all the glamour of a contemporary town residence. A 10min drive to world class shopping and dining at Chadstone The Fashion Capital.

Architect designed with bold modernist lines. A balance of light and dark colours, smooth and textured finishes, create a statement façade.







Seamless style

A classically elegant kitchen infused with beautiful natural light – styled with waterfall stone benchtops and herringbone patterned floors.



Urban lifestyle

A lifestyle location that has you surrounded by beautiful parks, designer fashion, and a melting pot of global cuisine.



Location

Key Establishments

Huff Bagelry

The specialty bagel store is a wonderland of bready goodness with a choice of plain, choc-chip, blueberry, poppy seed and gluten-free bagels.



Carnegie Primary School

The local government primary school has had a steady influx of students, recently upgraded with new open learning classrooms, breakout areas and a full-size gym.

Booran Reserve playground

Often dubbed 'Melbourne's best playground' the \$10.8 million adventure park wows with a huge dome rope climbing net and water park.



Rosstown Hotel

One of the best pubs in the neighbourhood is just a 10-minute walk offering a bistro, sports bar, and beer garden with live music.

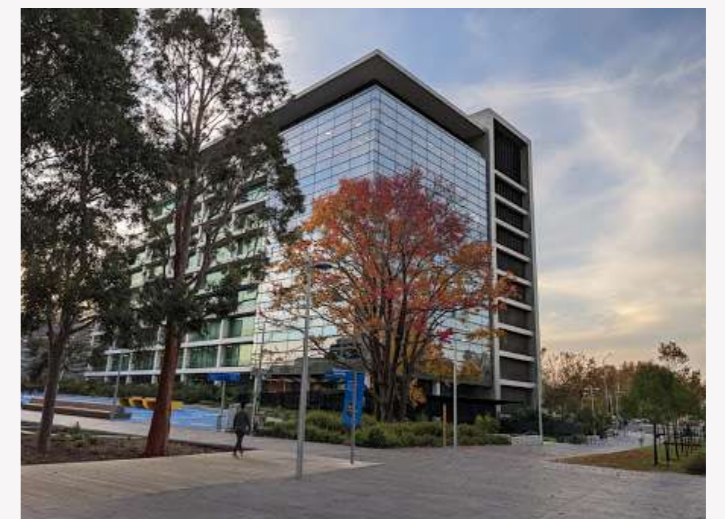


Murrumbeena Railway Station

One of Melbourne's newest train stations with 270 car parking spaces and bus links to Kew, Oakleigh, Chadstone and Sandringham.

Monash University Caulfield Campus

The second largest campus of the prestigious university with faculties for Arts, Business, Design, Economics, Medicine, Nursing and IT.



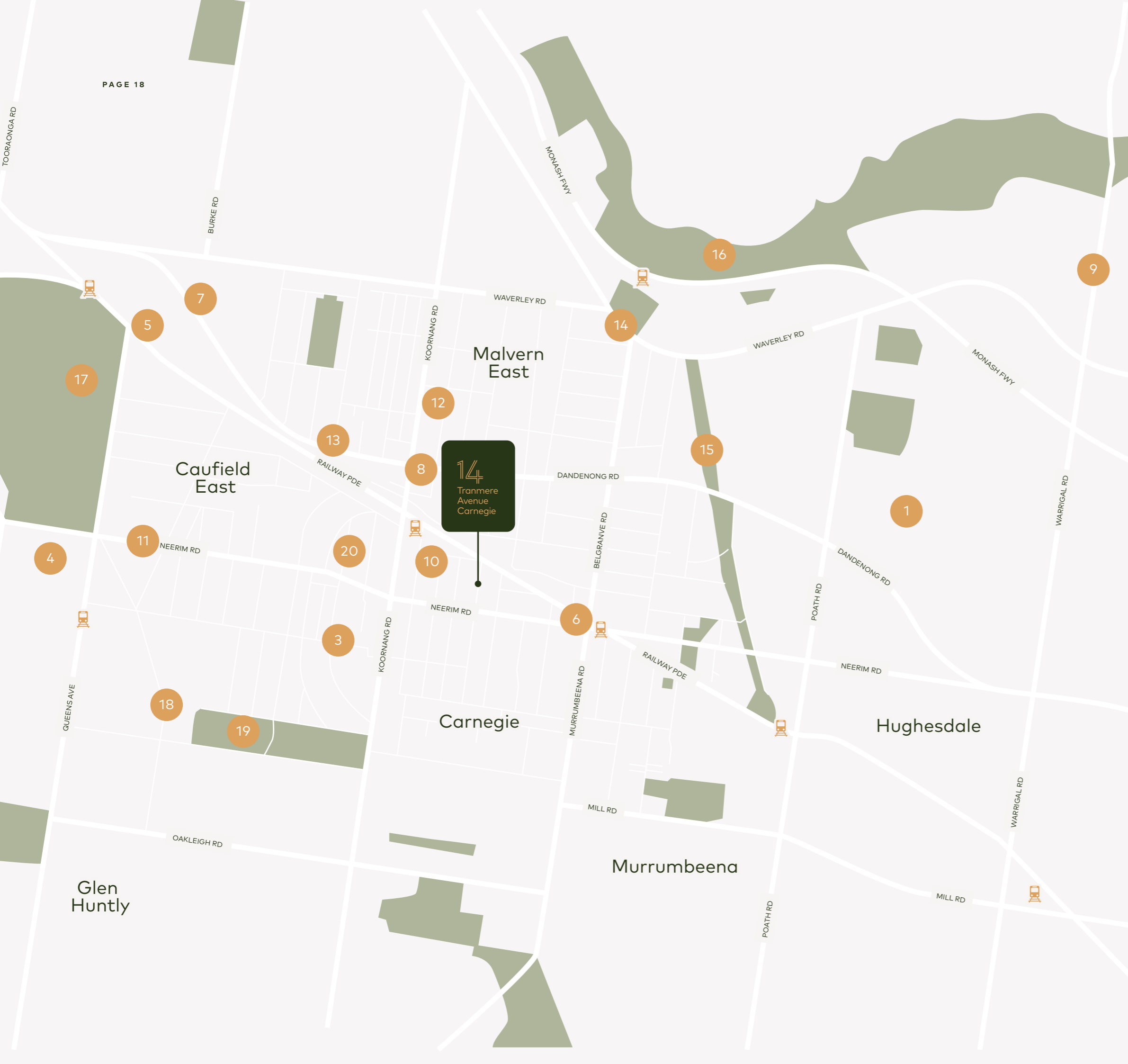


Heart Racing Destination

With Caulfield Racecourse only minutes' away, you have access to one of Melbourne's most prestigious event destinations.

Caulfield Racecourse is regarded as one of the best thoroughbred racing and event venues in Australia. Steeped in history, racing was first held at the Caulfield Racecourse site in 1859. In Caulfield's early days of racing, jockeys rode through rough bush, heath, and sand hills, earning Caulfield its affectionate moniker "The Heath". The Heath at Caulfield Racecourse now fondly carries this nickname.

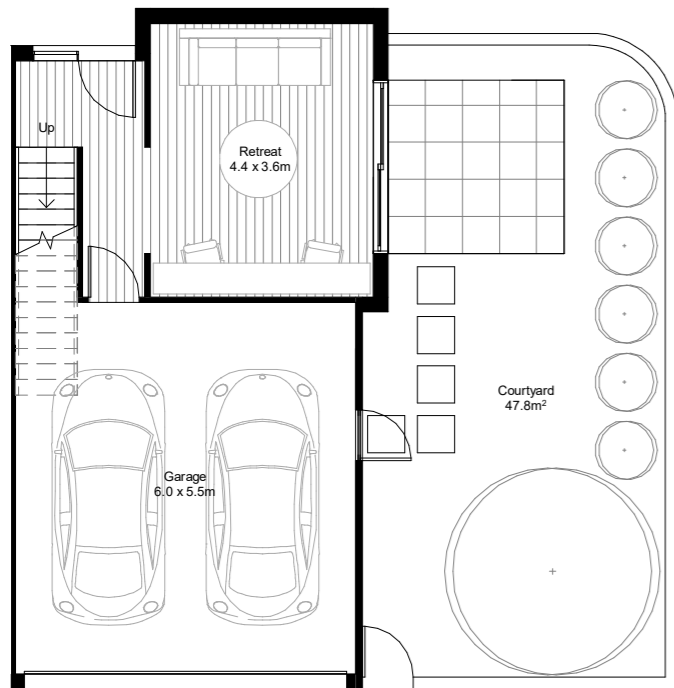




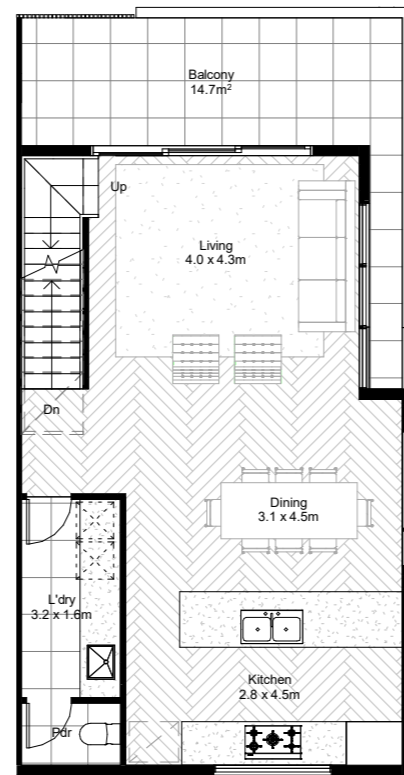
Location Map

- 1 Chadstone - The Fashion Capital
- 2 Huff Bagelry
- 3 Carnegie Primary School
- 4 Booran Reserve playground
- 5 Caulfield Plaza
- 6 Murrumbeena Railway Station
- 7 Monash University Caulfield Campus
- 8 Carnegie Central
- 9 Chadstone Lifestyle Centre
- 10 Carnegie Library
- 11 St Anthony's Catholic Church
- 12 ALDI Carnegie
- 13 Officeworks Carnegie
- 14 Waverley Oval
- 15 Urban Forest Reserve
- 16 Malvern Valley Public Golf Course
- 17 Caulfield Racecourse
- 18 Glen Huntly Primary School
- 19 Lord Reserve
- 20 Woolworths Carnegie

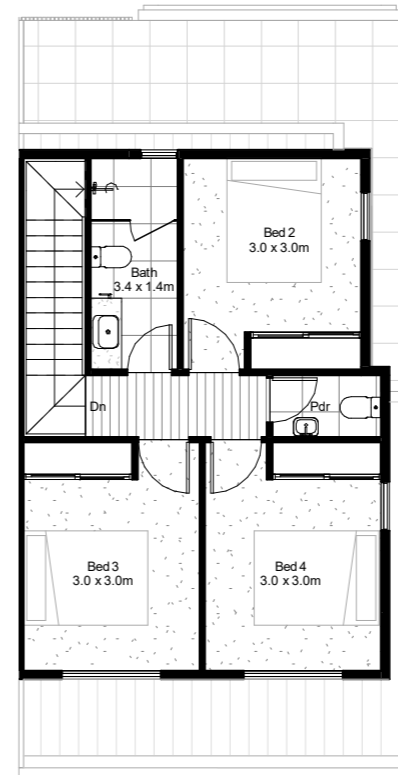
Floorplans



Ground Floor Plan



First Floor Plan

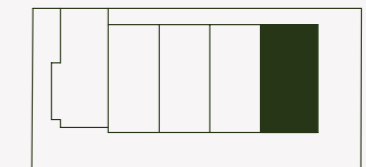


Second Floor Plan

Townhouse

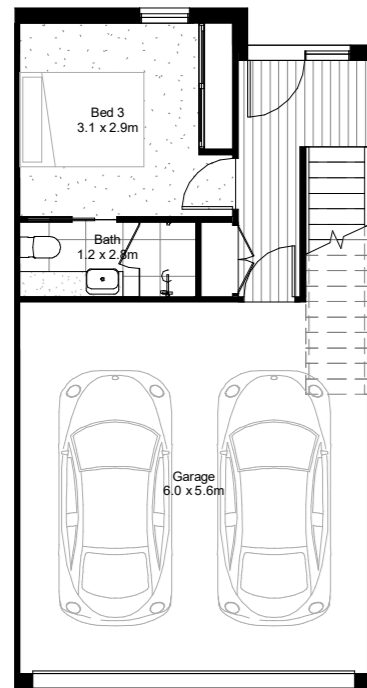
1

Total Area	238.0 m²
Ground Floor Living	27.8 m ²
First Floor Living	62.3 m ²
Second Floor Living	50.0 m ²
Garage	35.4 m ²
Balcony	14.7 m ²
Courtyard	47.8 m ²



14 Tranmore Avenue Carnegie

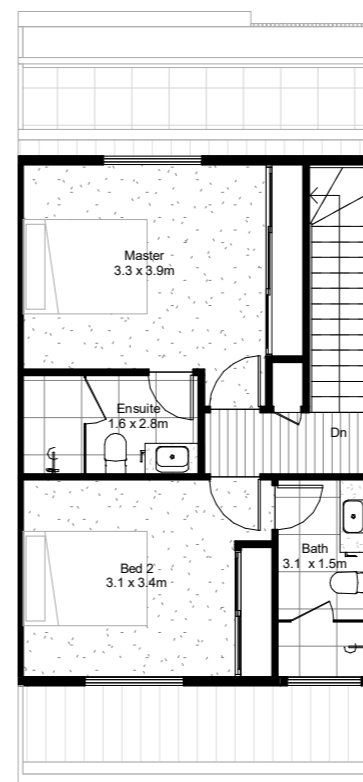
This document has been produced for information purposes only and has been produced in good faith and with due care, but is intended to be a visual aid only and does not necessarily depict the finished state of the object or thing shown. Furniture is not included with the property, we do not warrant the accuracy of the information contained in this document. Dimensions and specifications are subject to change without notice. We accept no responsibility for any loss, damage, cost or expense (whether direct or indirect) incurred by any person (including purchasers) as a result of any error, omission or misrepresentation of information in this document. This document does not constitute all or part of an offer or a contract of sale for any property referred to.



Ground Floor Plan



First Floor Plan

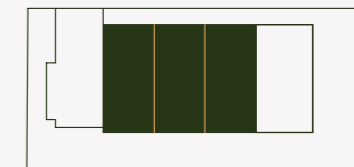


Second Floor Plan

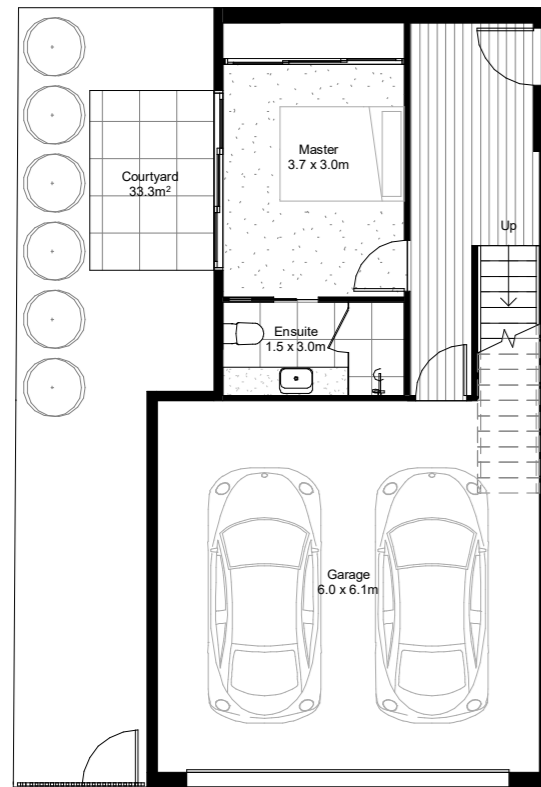
Townhouses

2=4

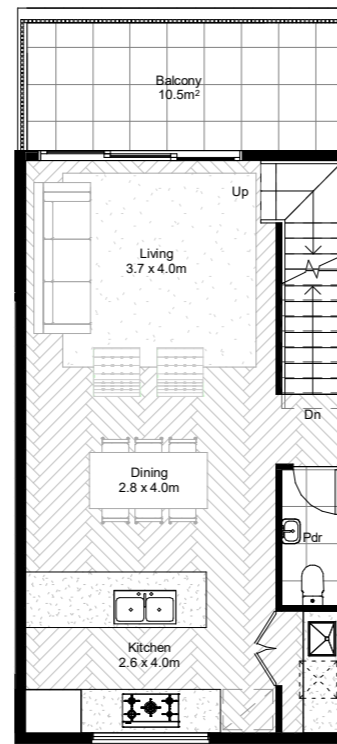
Total Area	177.9 m²
Ground Floor Living	26.1 m ²
First Floor Living	56.6 m ²
Second Floor Living	49.3 m ²
Garage	36.0 m ²
Balcony	9.9 m ²



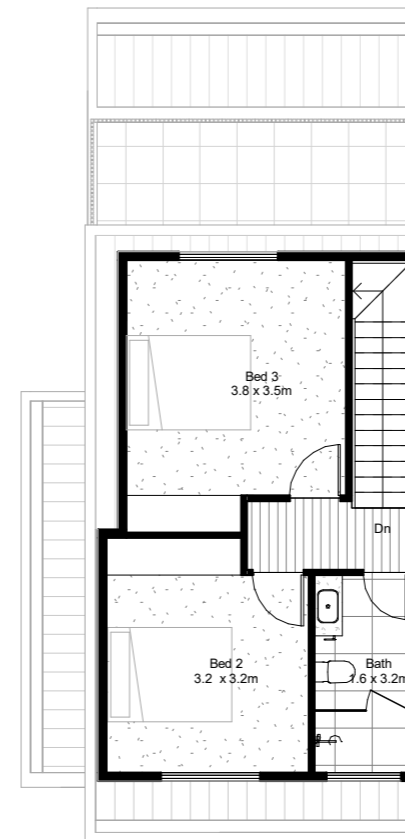
This document has been produced for information purposes only and has been produced in good faith and with due care, but is intended to be a visual aid only and does not necessarily depict the finished state of the object or thing shown. Furniture is not included with the property, we do not warrant the accuracy of the information contained in this document. Dimensions and specifications are subject to change without notice. We accept no responsibility for any loss, damage, cost or expense (whether direct or indirect) incurred by any person (including purchasers) as a result of any error, omission or misrepresentation of information in this document. This document does not constitute all or part of an offer or a contract of sale for any property referred to.



Ground Floor Plan



First Floor Plan

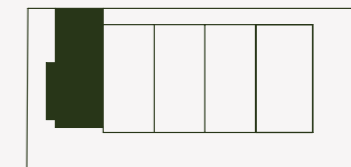


Second Floor Plan

Townhouse

5

Total Area	212.0 m²
Ground Floor Living	33.9 m ²
First Floor Living	51.5 m ²
Second Floor Living	42.7 m ²
Garage	40.1 m ²
Balcony	10.5 m ²
Courtyard	33.3 m ²



This document has been produced for information purposes only and has been produced in good faith and with due care, but is intended to be a visual aid only and does not necessarily depict the finished state of the object or thing shown. Furniture is not included with the property, we do not warrant the accuracy of the information contained in this document. Dimensions and specifications are subject to change without notice. We accept no responsibility for any loss, damage, cost or expense (whether direct or indirect) incurred by any person (including purchasers) as a result of any error, omission or misrepresentation of information in this document. This document does not constitute all or part of an offer or a contract of sale for any property referred to.

About Us

The Developer

Based in Melbourne with more than two decades of experience, Frater Group is an established property development firm that focuses on exceeding expectations.

With a collaboration team comprising of industry leading professionals, Frater Group draws on its expertise in construction consulting, and project management to deliver landmark projects on time.

With its headquarters located in Preston and a long association with the local community, Frater Group has an intimate understanding of how locals want to live and work in emerging suburbs within Melbourne's inner-north.



FRATER



FRATER

fratergroup.com.au

Marketing by Offplan