

NEWINGTON

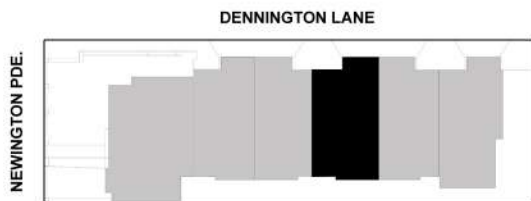
2 NEWINGTON PDE. CHELSEA

UNIT 4

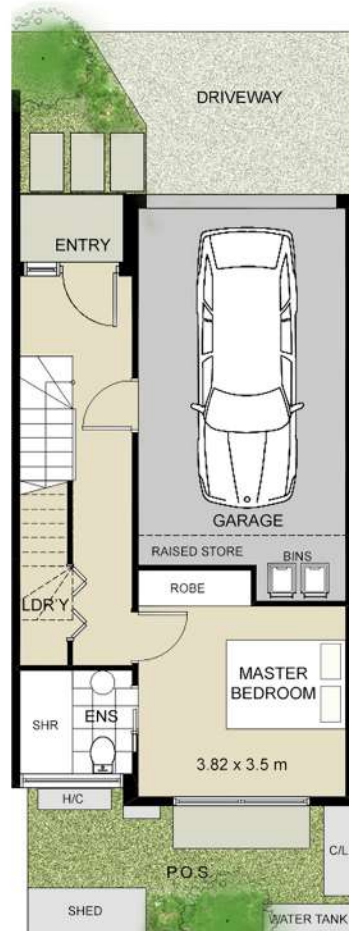
3 STOREY

2 BED 2 BATH 1 CAR

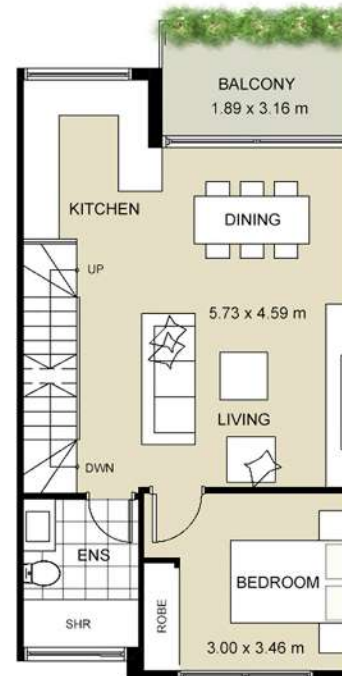
GROUND FLOOR	56.5m ²
FIRST FLOOR	55.1m ²
SECOND FLOOR	34.6m ²
BALCONY	6.0m ²
TOTAL BUILDING	152.2m²
P.O.S	13.3m²



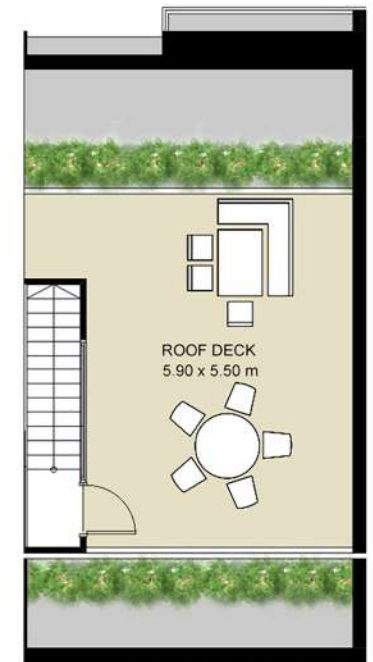
SITE PLAN



GROUND FLOOR



FIRST FLOOR



SECOND FLOOR



NORTH

