



Treehaus

Limited edition for unlimited imagination.



Welcome to an enclave of 17 designer terraces in a sought-after suburb. Where exclusivity and accessibility harmoniously co-exist beneath a rooftop garden (which, by the way, belongs entirely to you), and every level is up for larger-than-life living. Life's too short to settle for the ho-hum. Rise above it all in Treehaus, home to heightened imagination.



Treehaus

Elevated living.











Treehaus

Open space.









Treehaus

Prime postcode.



Melbourne Zoo

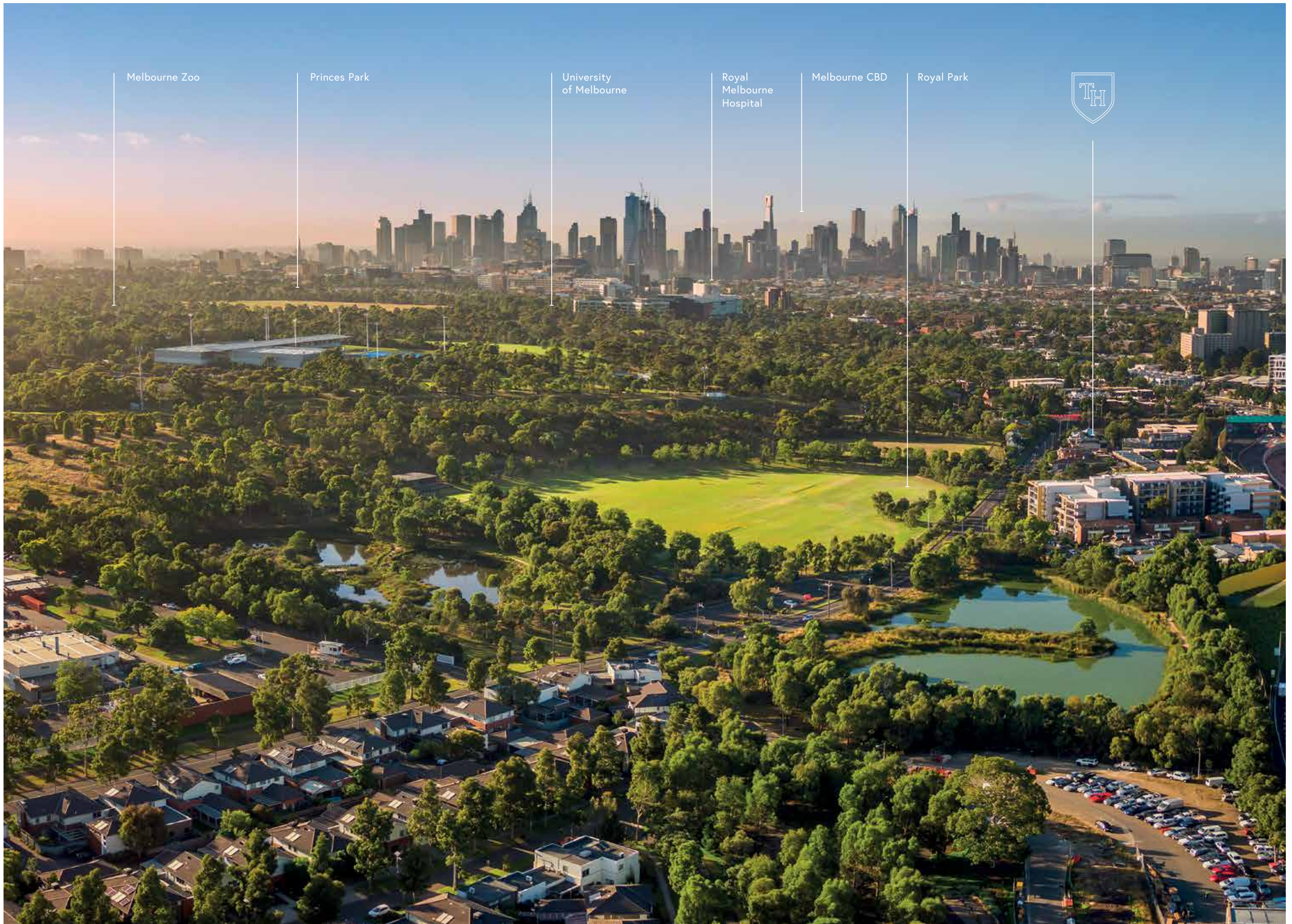
Princes Park

University
of Melbourne

Royal
Melbourne
Hospital

Melbourne CBD

Royal Park





01.
Royal Park

At 181 hectares, Royal Park is one of Melbourne's largest. Here, a multitude of sporting facilities (tennis club; golf course; soccer field; walkways; cycle paths; cricket pitch and more) border open grassy areas. Active or relaxing, this park has the perfect spot.

03.
Flemington Racecourse

Home to the Melbourne Cup, Flemington Racecourse also hosts an array of events, including Cirque de Soleil and New Year's Eve fireworks. It's a win for everyone.

02.
Education

From pre-school to primary, high school to tertiary, when it comes to education, it's smart to settle in Parkville. There are more than 54 educational centres around the area, including Melbourne University, consistently ranked amongst the world's best.

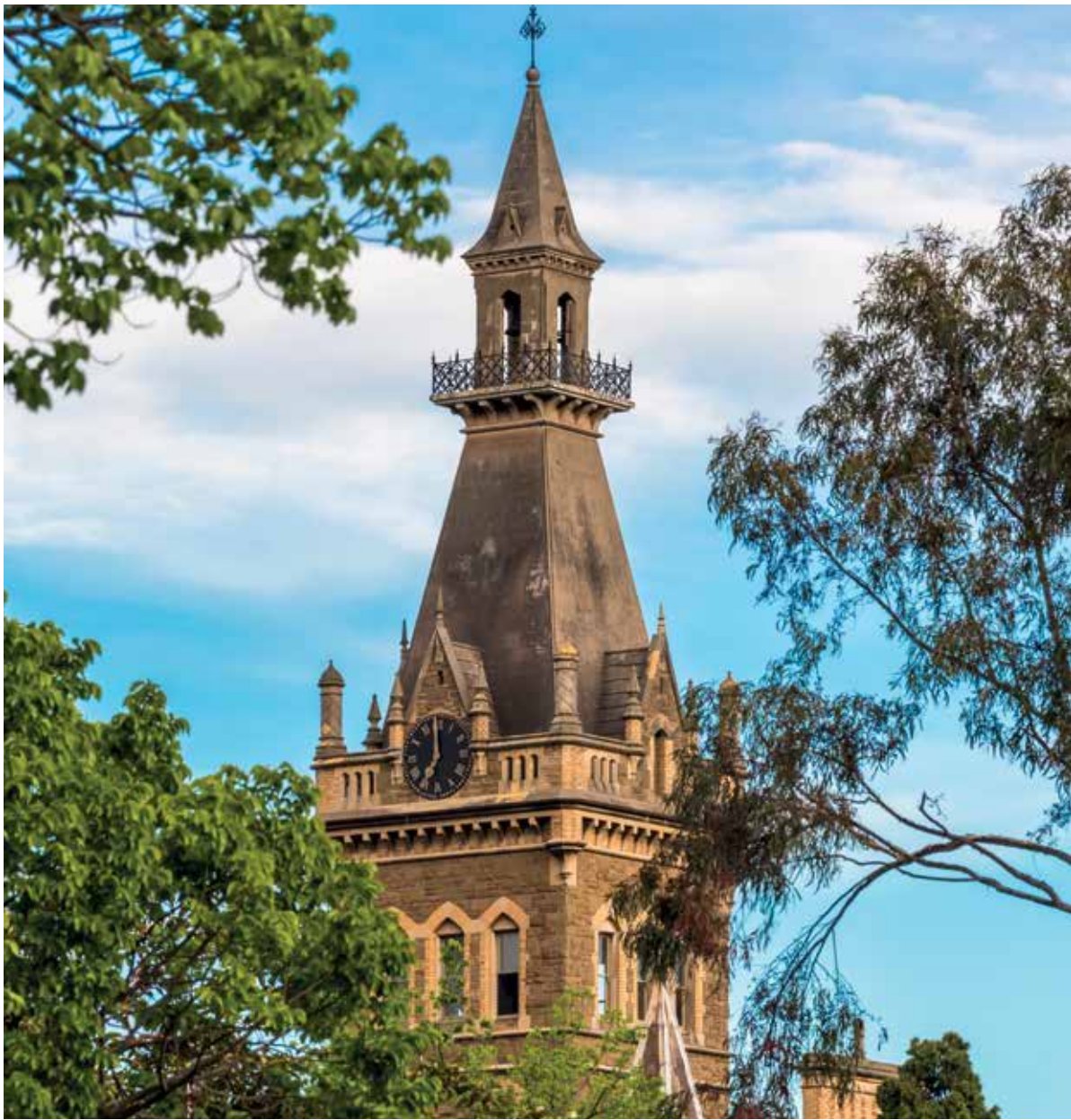
04.
Bars & Restaurants

Head to nearby Sydney Road, Brunswick, or Flemington's Racecourse Road for a smorgasbord of delicious eat/drink options. And that's just for starters...

ROYAL PARK



EDUCATION



FLEMINGTON RACECOURSE



BARS & RESTAURANTS



Treehaus

The team.



CRONE ARCH TESTS

Every community is different. Every neighbourhood is unique. We create living spaces that respect these truths – spaces that champion the true nature and character of those who will live there. Drawing on our leading expertise, agile network and deep insight, we design and build bespoke environments that are curated for a distinctive life.

Powered by an experienced team that has collectively delivered over \$300million worth of property to date, our approach to tailoring community-focused projects results in buildings that are not only beautiful to look at: they create meaningful connections for the long-term.



CRONE believes buildings can stimulate our senses, encouraging us to look up, breathe in and absorb our surroundings. The best of them stand testament to the rich history of a locale, and embrace its future excitedly. We've found intelligent architecture unites technology, sustainability and human emotion, and our decades-strong networks in design and construction help us achieve that balance faster.

Communities are changing. The way we relate to others is elastic, constantly shifting and evolving. At CRONE, every project engages with people first, catering to the subtle nuances of relationships. Buildings are for humans, after all.



Treehaus

Specifications.



Building External Envelope	
Walls	Concealed fixed tongue and groove timber batten cladding
Windows	Powder coated aluminum framing with double glazing
Roof	Metal deck
Balconies / terraces	Solid timber decking
Car park	Sealed concrete with timber batten gates
Living Area	
Flooring	Tongue and grooved American Oak timber composite board Colour: smoked and limed
Walls / ceiling	Painted plasterboard
Kitchen	
Flooring	Tongue and grooved American Oak timber composite board Colour: smoked and limed
Walls / ceiling	Painted plasterboard
Lighting	LED dimmable strip pendant in white
Benchtop	Natural stone
Cupboards	2 Pac polyurethane cupboards with laminate carcass
Waste bin	Waste and recycling bin system
Splashback	Natural stone
Handles	Combination of concealed finger pulls and brass joinery hardware
Kitchen mixer	Urban brass sink mixer with swivel spout
Sink	Single bowl sink with bowl protector
Dishwasher	Fisher & Paykel 600mm integrated tall dish drawer
Oven	Miele 900mm electric built-in oven
Cooktop	Miele 900mm gas cook top
Rangehood	Schweigen 900mm undermount rangehood
Bathroom / Ensuite (where applicable)	
Flooring	Cliffstone large format tiles
Walls	Full height porcelain tiles
Ceilings	Painted plasterboard
Mirror	Single mirror
Basin	White glass enamel counter basin
Accessories	Towel rail, toilet roll holder, hand towel rail, shower shelf in urban brass finish
Toilet	White vitreous china
Shower	Low iron glass shower screen with powder coated aluminum frame
Bath (where applicable)	White back to wall freestanding bath
Tap set	Urban brass finish

Laundry	
Floors and skirting	Cliffstone large format tiles
Walls and ceiling	Painted plasterboard
Tap set	Urban brass finish
Doors	2 Pac cupboard fronts in low sheen finish with laminate carcass
Basin	Trough basin
Bench and splashback	Natural stone
Bedroom	
Flooring	100% Wool carpet
Walls and ceiling	Painted plasterboard white on white semi gloss acrylic
Wardrobe	2 Pac polyurethane cupboard fronts in low sheen with laminate carcass, includes built-in shelving drawers and hanging rail
General	
Entry doors	Timber clad finish
Internal doors	Painted semi-gloss finish
Door furniture	Assa Abloy brass finish
Skirting	Painted timber
Rooftop	
Lighting	Up / down wall lighting
Floor	Solid timber decking boards
Electrical / Mechanical / Communication	
Living room lighting	Flexible track lighting
Kitchen lighting	LED dimmable strip pendant in white
Bedroom lighting	LED recessed down lights
Corridor lighting	LED recessed down lights
Ensuite / bathroom lighting	Pendant aluminum silver / brass finish
TV	Antenna and one outlet to living area
Telephone / data	One outlet to living area and all bedrooms
Air conditioning	Concealed split systems with slot diffusers (two units to living areas and one unit to main bedroom)
Hot water	Individual gas hot water units located at roof terrace with solar panels
Security	Secure access to carpark and in turn to common courtyard
Foxtel	Cables pre-run with outlet (satellite dish by purchaser)
NBN	NBN box and outlet provided
Electrical and communications (exclusions)	
Internet	Standard one outlet to living area and all bedrooms, NBN box and outlet provided

Treehaus

Master plans.

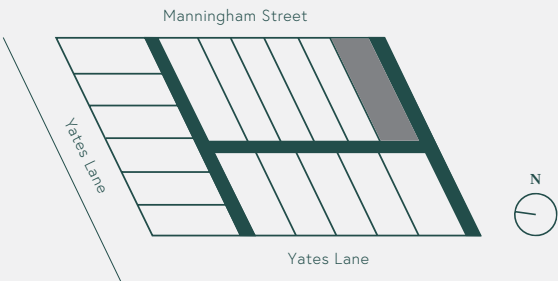




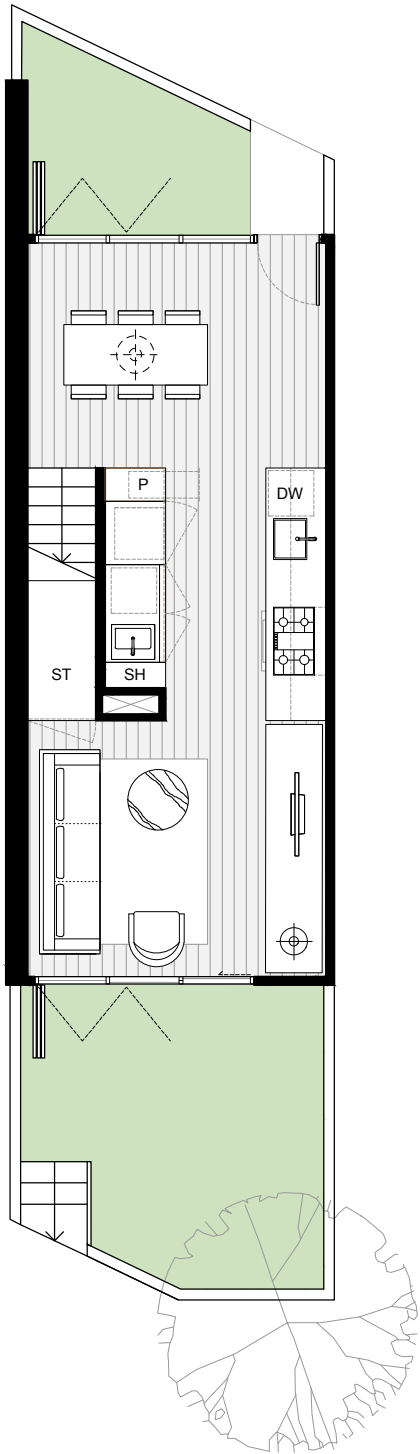
MANNINGHAM STREET
PARKVILLE

Home 01

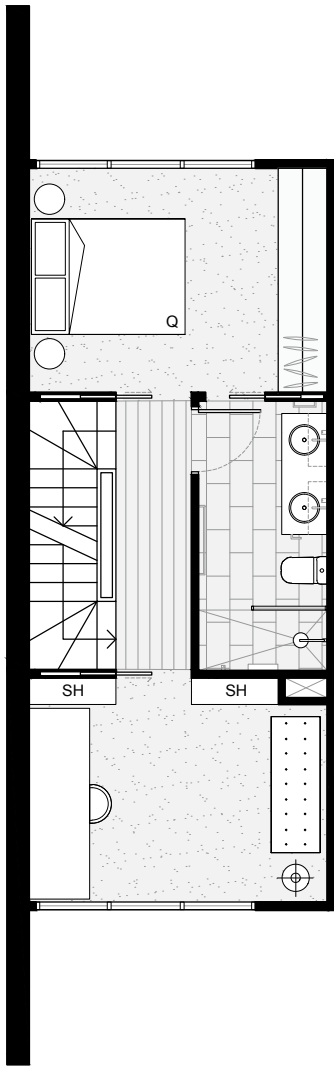
Bedrooms	4
Bathrooms	2
Car Park	2
Total Home Area	150m ²
Ground Floor External	25m ²
Car Park Area	29m ²



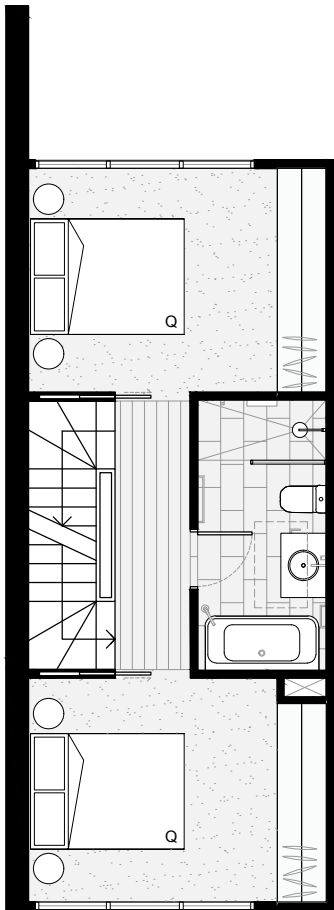
GROUND FLOOR



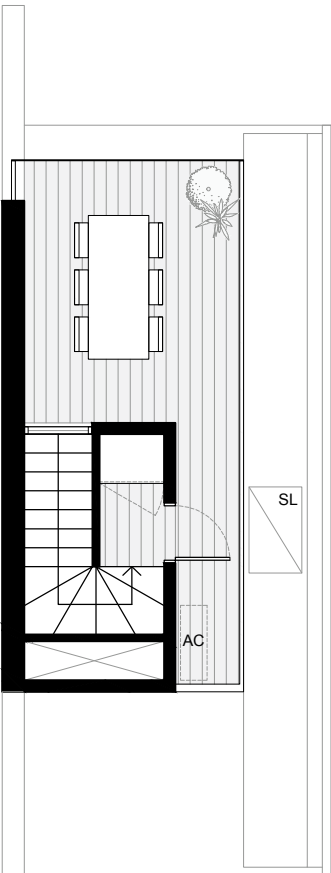
LEVEL 1



LEVEL 2



ROOFTOP TERRACE



Disclaimer: This floor plan has been prepared for marketing purposes only. All descriptions, dimensions, depictions and other details in this floor plate may not be to scale and may vary from the property as built. Your attention is drawn to the special conditions of the contract for sale of land. No third party has any authority to make or give any representation or warranty in relation to the property unless the representation or warranty is confirmed by the vendor and included in the contract for sale of land. The furniture displayed is not included as part of the sale.

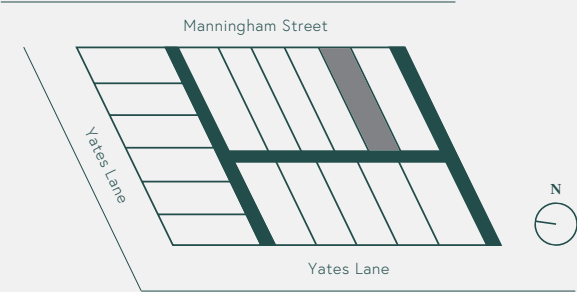




MANNINGHAM STREET
PARKVILLE

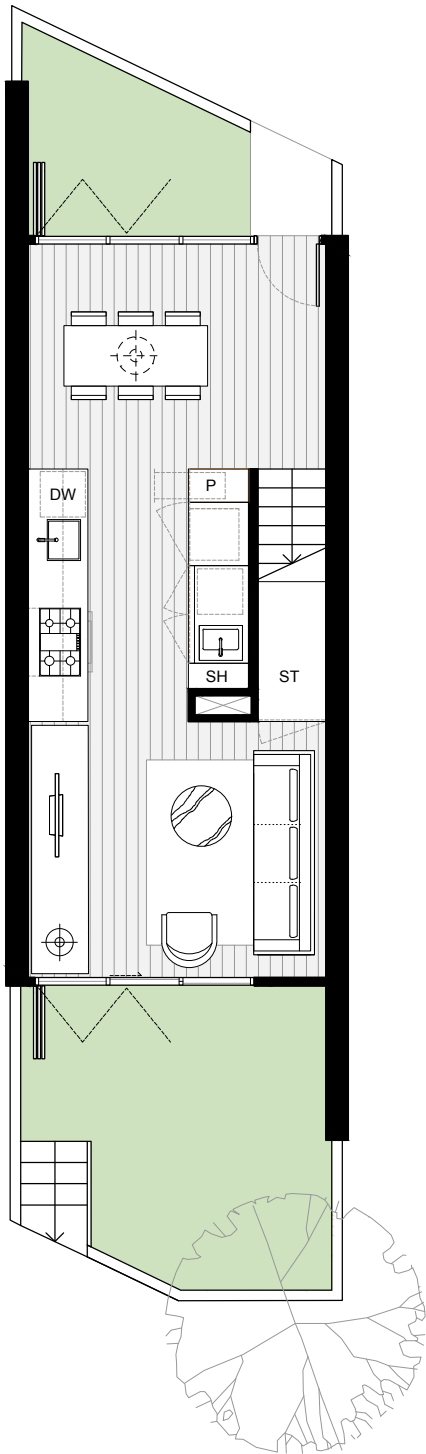
Home 02

Bedrooms	4
Bathrooms	2
Car Park	2
Total Home Area	159m ²
Ground Floor External	24m ²
Car Park Area	29m ²

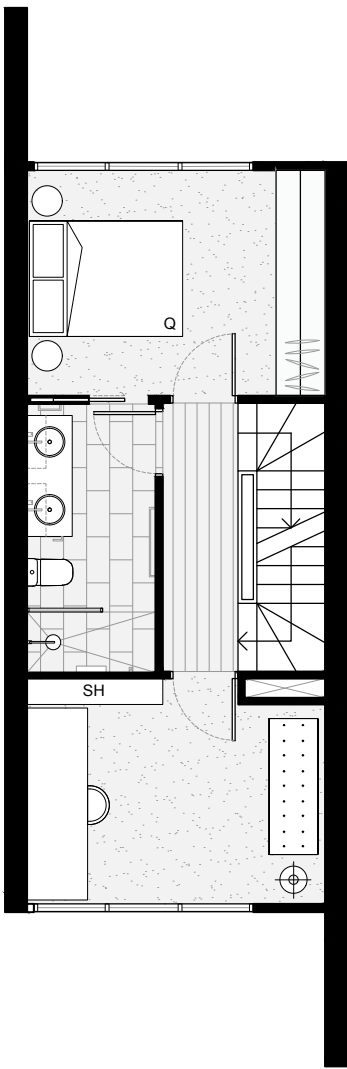


Disclaimer: This floor plan has been prepared for marketing purposes only. All descriptions, dimensions, depictions and other details in this floor plate may not be to scale and may vary from the property as built. Your attention is drawn to the special conditions of the contract for sale of land. No third party has any authority to make or give any representation or warranty in relation to the property unless the representation or warranty is confirmed by the vendor and included in the contract for sale of land. The furniture displayed is not included as part of the sale.

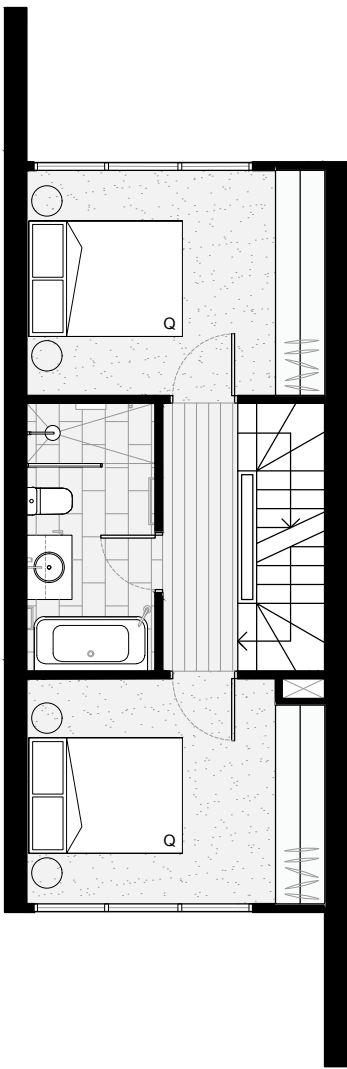
GROUND FLOOR



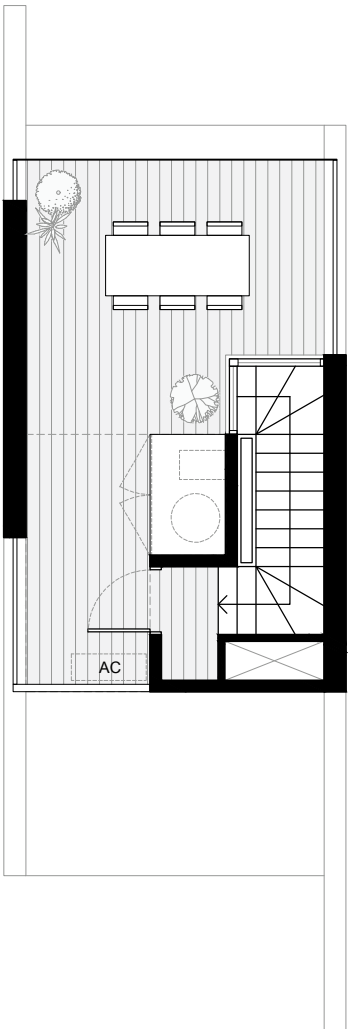
LEVEL 1



LEVEL 2



ROOFTOP TERRACE

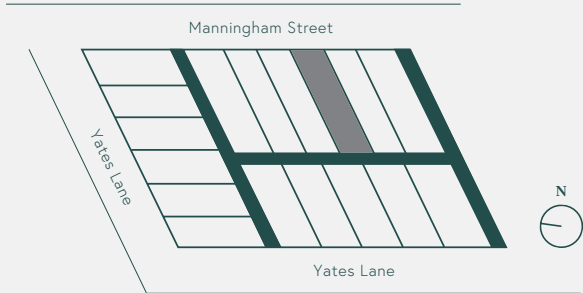




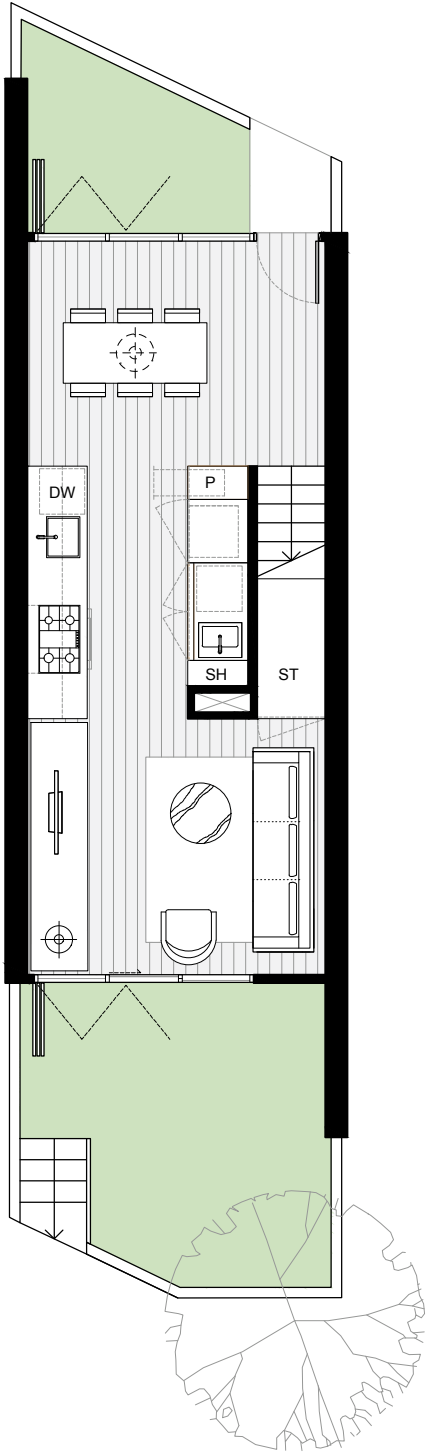
MANNINGHAM STREET
PARKVILLE

Home 03

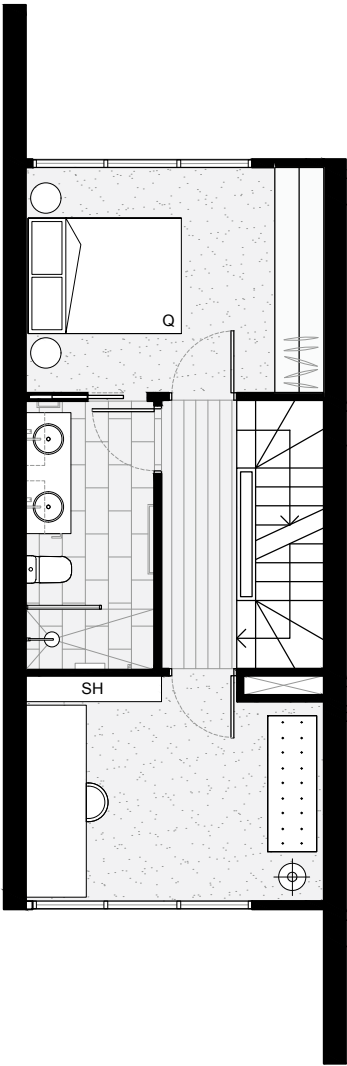
Bedrooms	4
Bathrooms	2
Car Park	2
Total Home Area	159m ²
Ground Floor External	24m ²
Car Park Area	29m ²



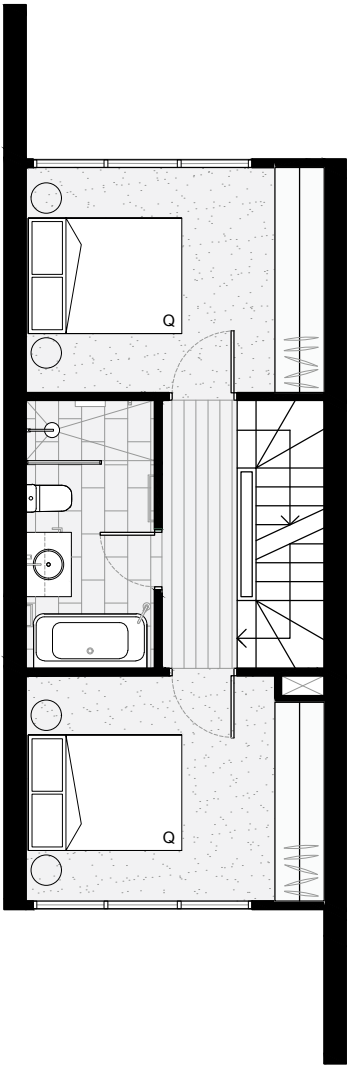
GROUND FLOOR



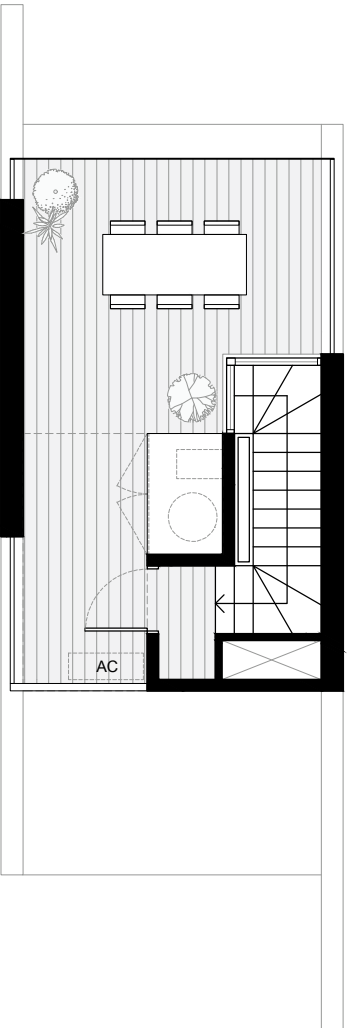
LEVEL 1



LEVEL 2



ROOFTOP TERRACE



Disclaimer: This floor plan has been prepared for marketing purposes only. All descriptions, dimensions, depictions and other details in this floor plate may not be to scale and may vary from the property as built. Your attention is drawn to the special conditions of the contract for sale of land. No third party has any authority to make or give any representation or warranty in relation to the property unless the representation or warranty is confirmed by the vendor and included in the contract for sale of land. The furniture displayed is not included as part of the sale.

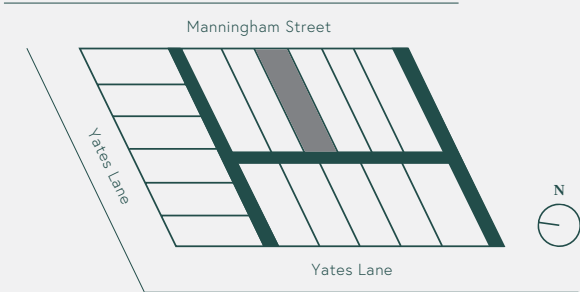




MANNINGHAM STREET
PARKVILLE

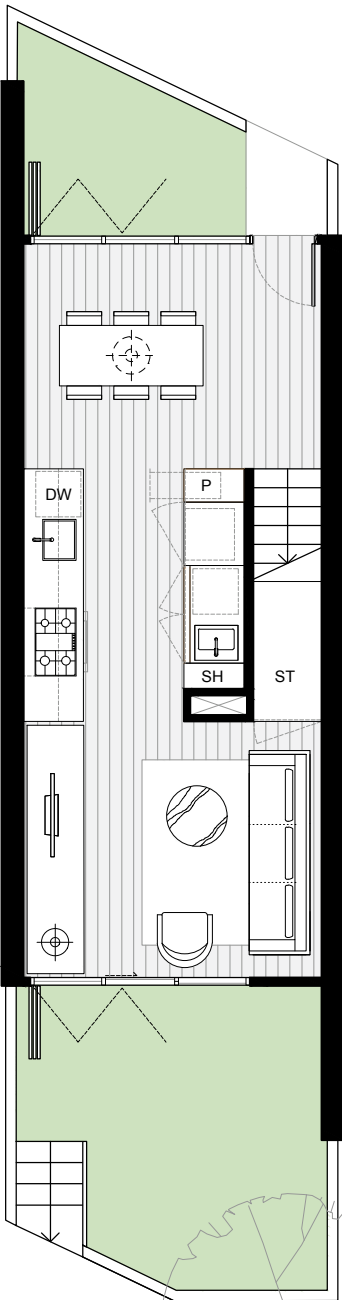
Home 04

Bedrooms	4
Bathrooms	2
Car Park	2
Total Home Area	159m ²
Ground Floor External	24m ²
Car Park Area	29m ²

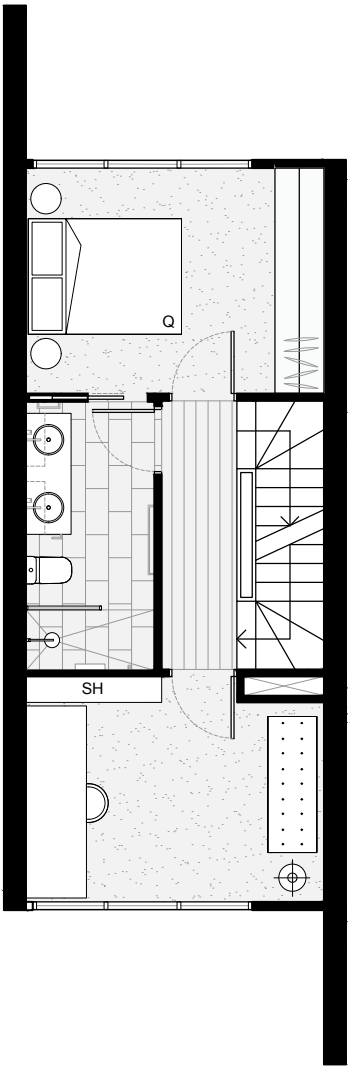


Disclaimer: This floor plan has been prepared for marketing purposes only. All descriptions, dimensions, depictions and other details in this floor plate may not be to scale and may vary from the property as built. Your attention is drawn to the special conditions of the contract for sale of land. No third party has any authority to make or give any representation or warranty in relation to the property unless the representation or warranty is confirmed by the vendor and included in the contract for sale of land. The furniture displayed is not included as part of the sale.

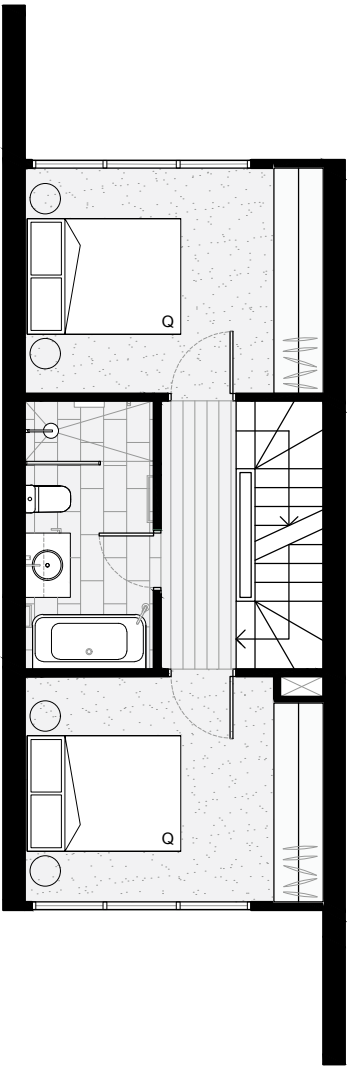
GROUND FLOOR



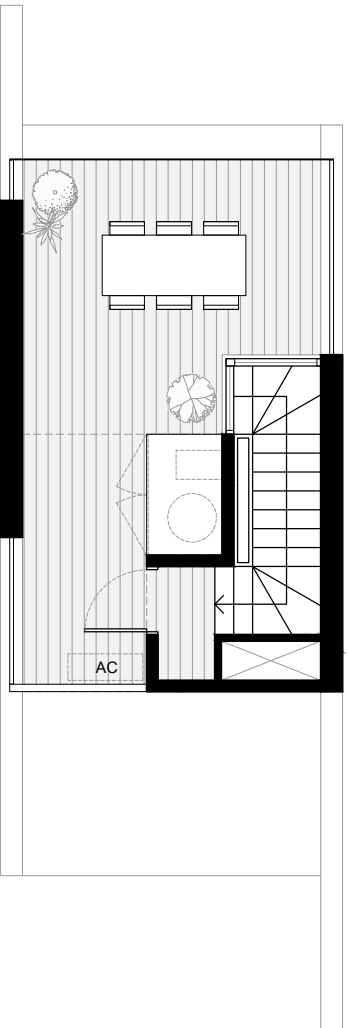
LEVEL 1



LEVEL 2



ROOFTOP TERRACE

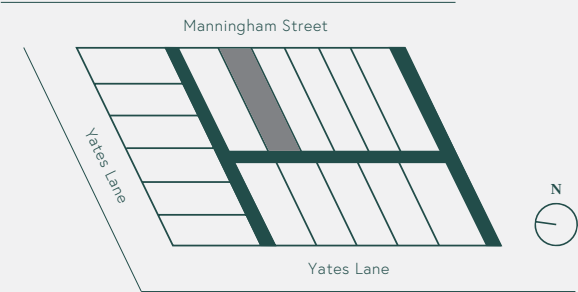




MANNINGHAM STREET
PARKVILLE

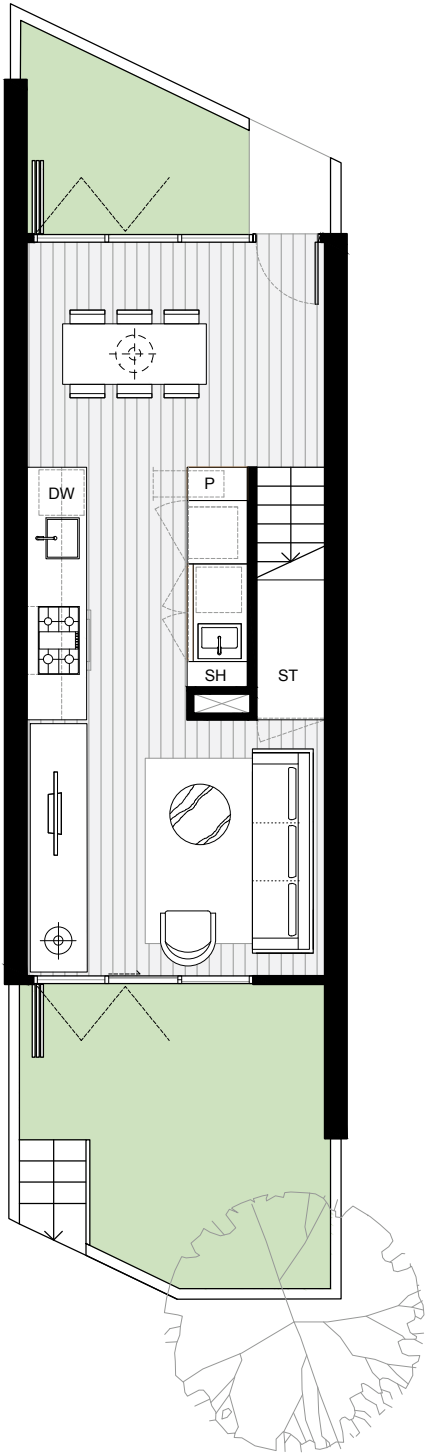
Home 05

Bedrooms	4
Bathrooms	2
Car Park	2
Total Home Area	159m ²
Ground Floor External	24m ²
Car Park Area	29m ²

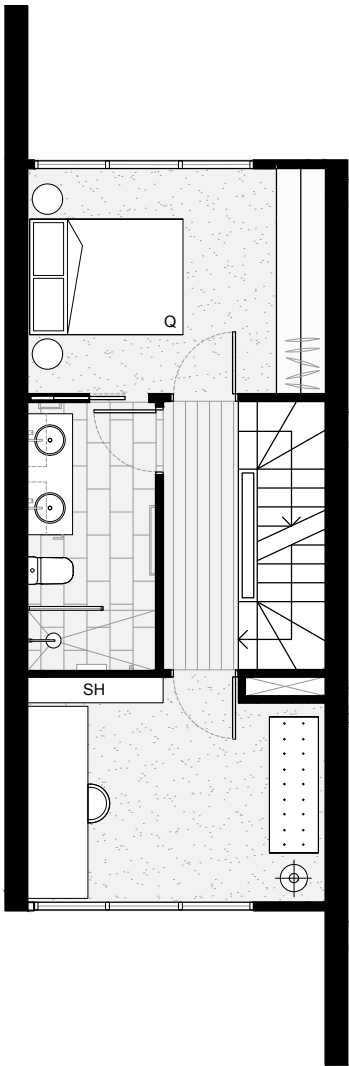


Disclaimer: This floor plan has been prepared for marketing purposes only. All descriptions, dimensions, depictions and other details in this floor plate may not be to scale and may vary from the property as built. Your attention is drawn to the special conditions of the contract for sale of land. No third party has any authority to make or give any representation or warranty in relation to the property unless the representation or warranty is confirmed by the vendor and included in the contract for sale of land. The furniture displayed is not included as part of the sale.

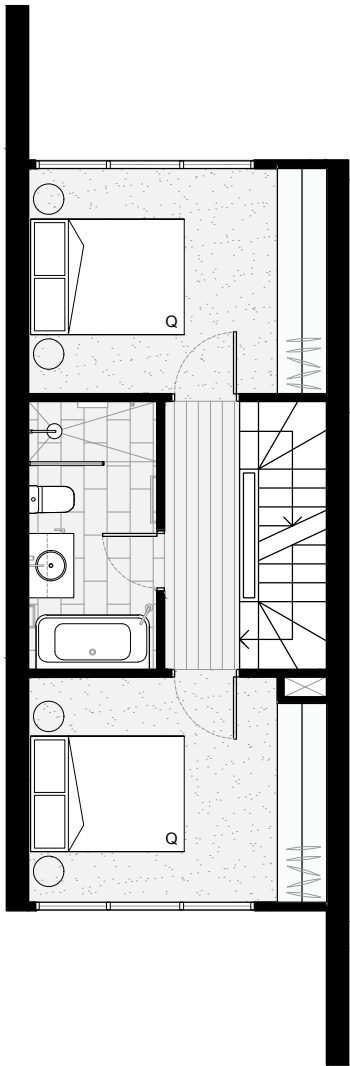
GROUND FLOOR



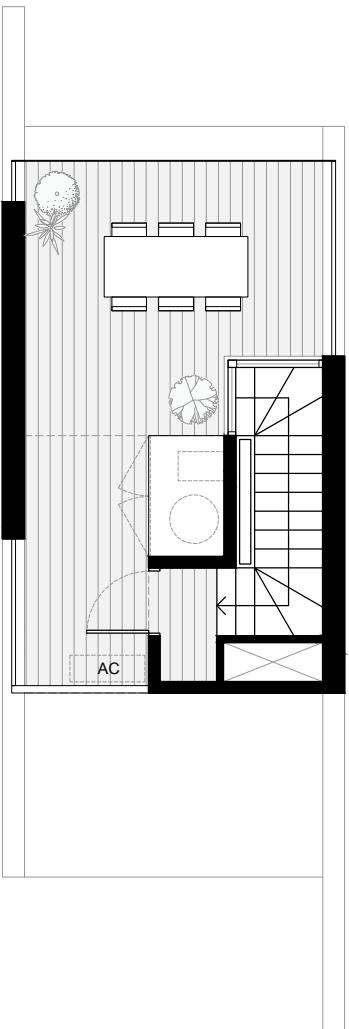
LEVEL 1



LEVEL 2



ROOFTOP TERRACE

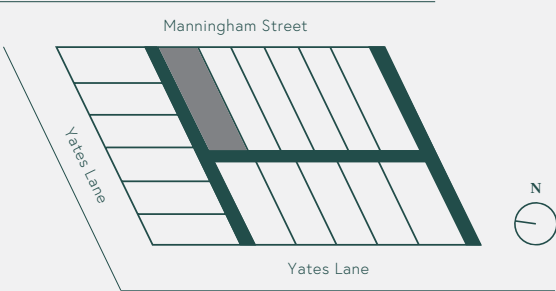




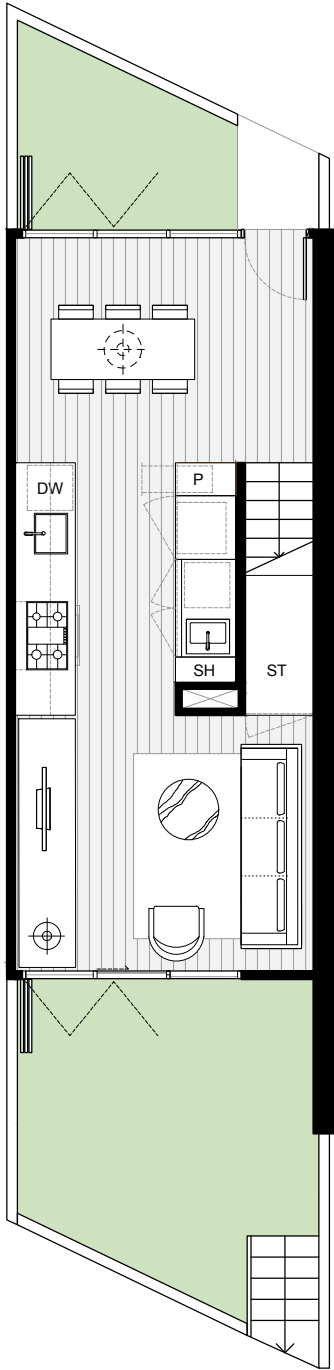
MANNINGHAM STREET
PARKVILLE

Home 06

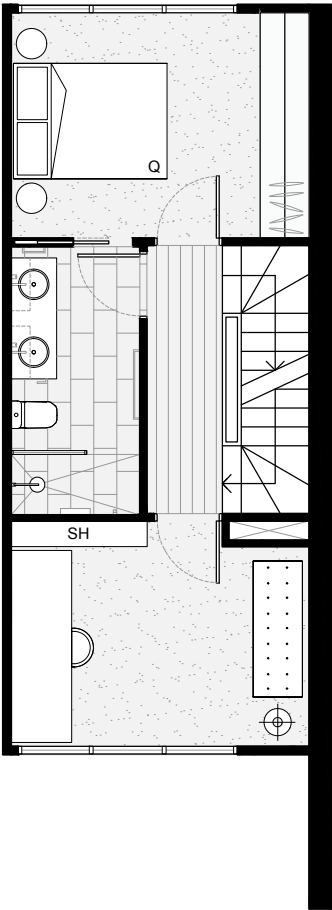
Bedrooms	4
Bathrooms	2
Car Park	2
Total Home Area	156m ²
Ground Floor External	25m ²
Car Park Area	29m ²



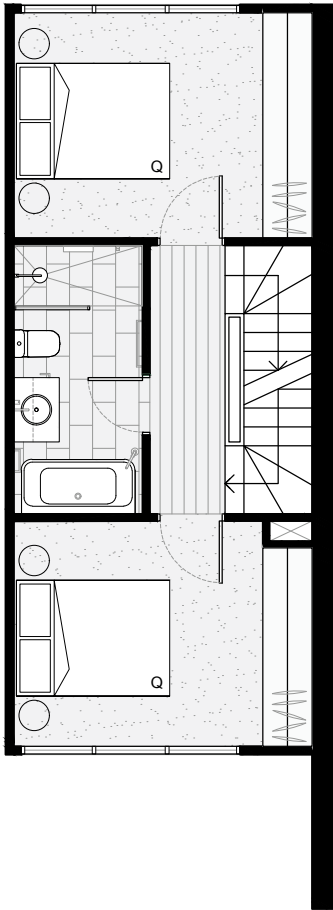
GROUND FLOOR



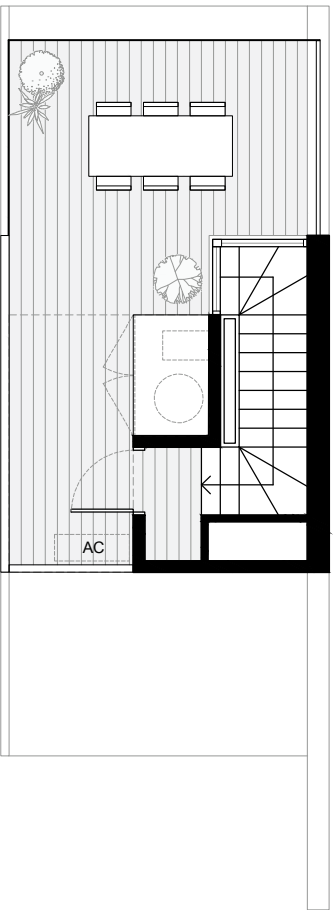
LEVEL 1



LEVEL 2



ROOFTOP TERRACE



Disclaimer: This floor plan has been prepared for marketing purposes only. All descriptions, dimensions, depictions and other details in this floor plate may not be to scale and may vary from the property as built. Your attention is drawn to the special conditions of the contract for sale of land. No third party has any authority to make or give any representation or warranty in relation to the property unless the representation or warranty is confirmed by the vendor and included in the contract for sale of land. The furniture displayed is not included as part of the sale.

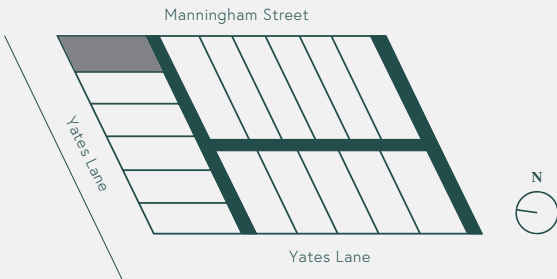




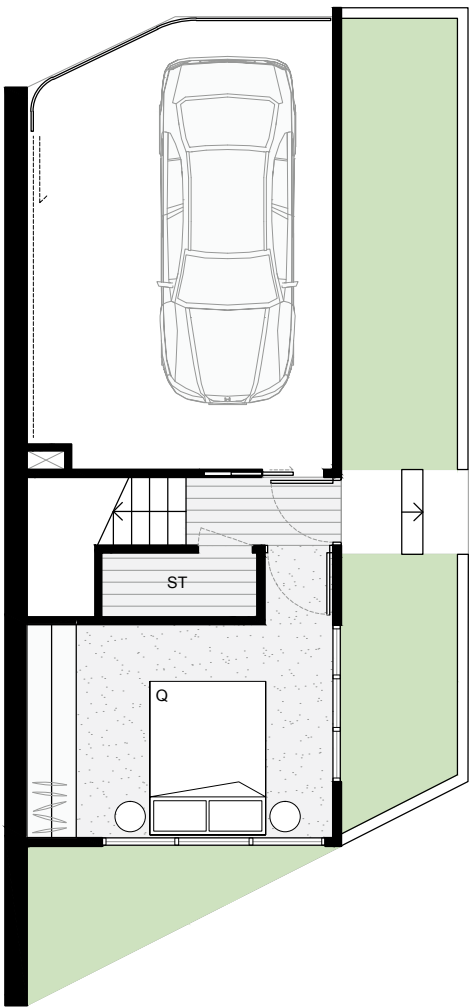
MANNINGHAM STREET
PARKVILLE

Home 07

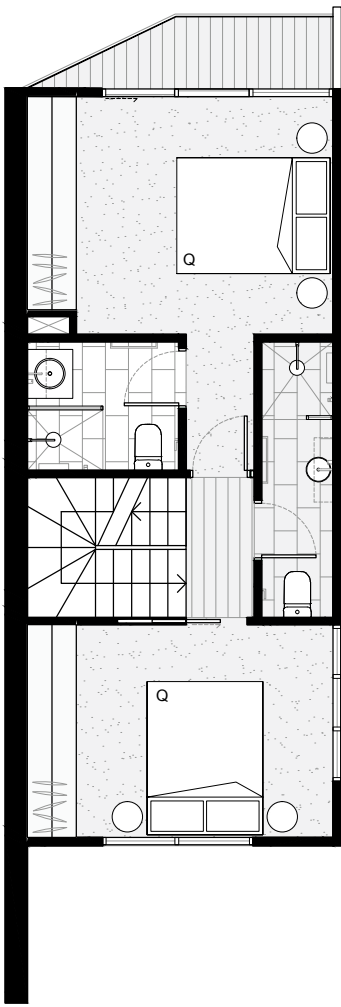
Bedrooms	3
Bathrooms	2
Car Park	1
Total Home Area	175m ²
Ground Floor External	28m ²
Car Park Area	Inc.



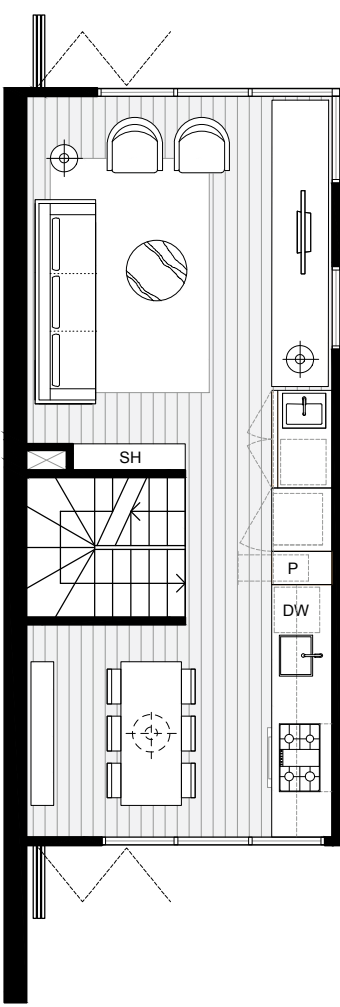
GROUND FLOOR



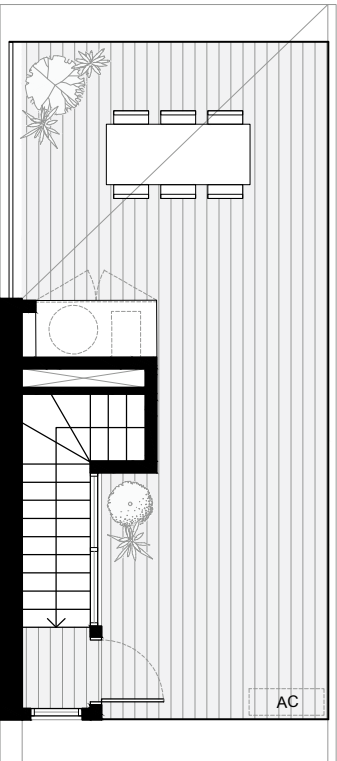
LEVEL 1



LEVEL 2



ROOFTOP TERRACE



Disclaimer: This floor plan has been prepared for marketing purposes only. All descriptions, dimensions, depictions and other details in this floor plate may not be to scale and may vary from the property as built. Your attention is drawn to the special conditions of the contract for sale of land. No third party has any authority to make or give any representation or warranty in relation to the property unless the representation or warranty is confirmed by the vendor and included in the contract for sale of land. The furniture displayed is not included as part of the sale.

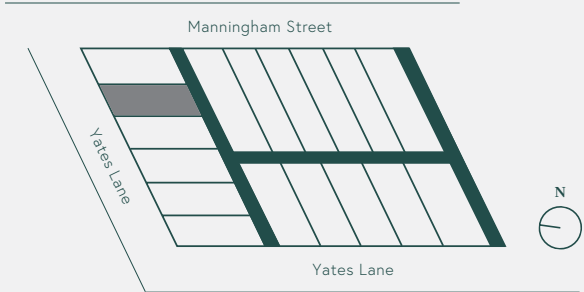




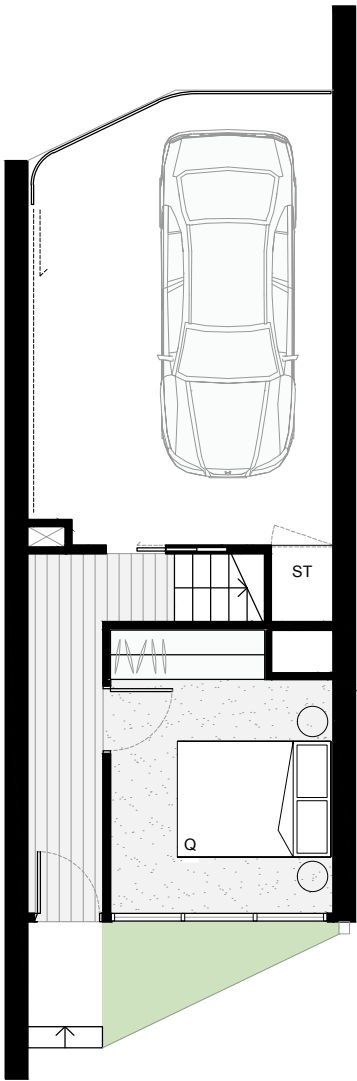
MANNINGHAM STREET
PARKVILLE

Home 08

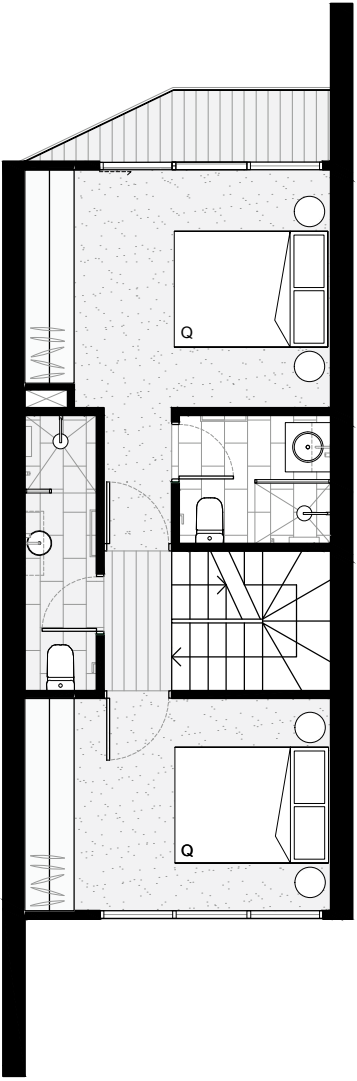
Bedrooms	3
Bathrooms	2
Car Park	1
Total Home Area	178m ²
Ground Floor External	7m ²
Car Park Area	Inc.



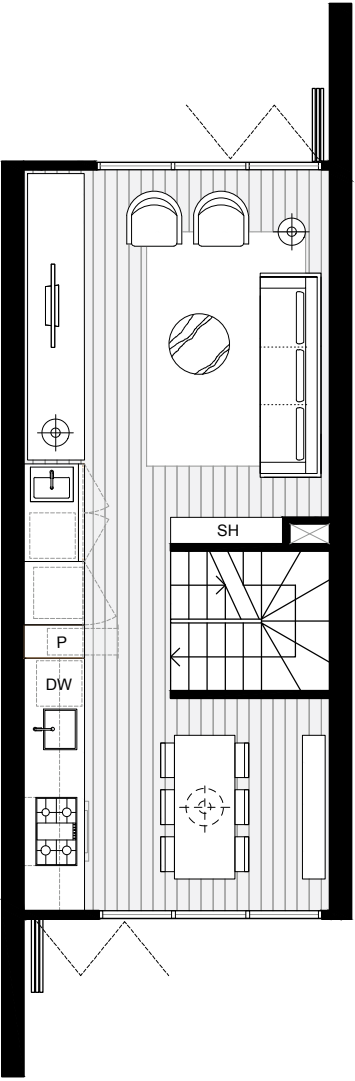
GROUND FLOOR



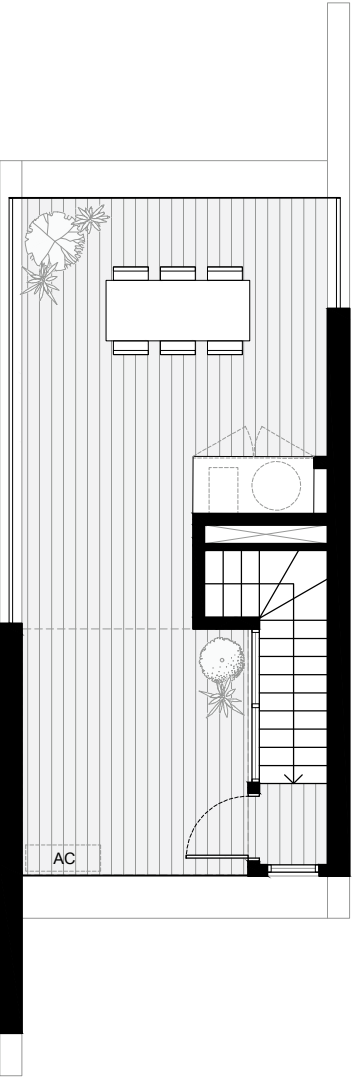
LEVEL 1



LEVEL 2



ROOFTOP TERRACE



Disclaimer: This floor plan has been prepared for marketing purposes only. All descriptions, dimensions, depictions and other details in this floor plate may not be to scale and may vary from the property as built. Your attention is drawn to the special conditions of the contract for sale of land. No third party has any authority to make or give any representation or warranty in relation to the property unless the representation or warranty is confirmed by the vendor and included in the contract for sale of land. The furniture displayed is not included as part of the sale.

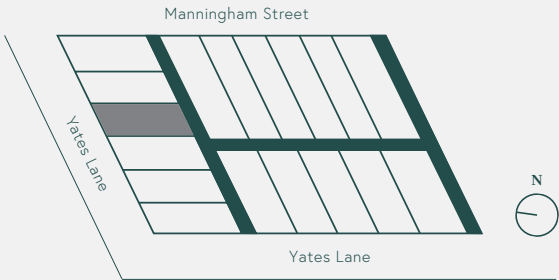




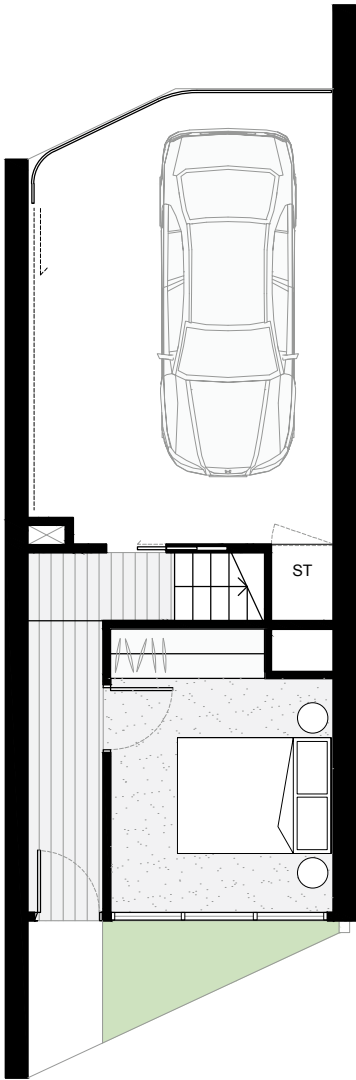
MANNINGHAM STREET
PARKVILLE

Home 09

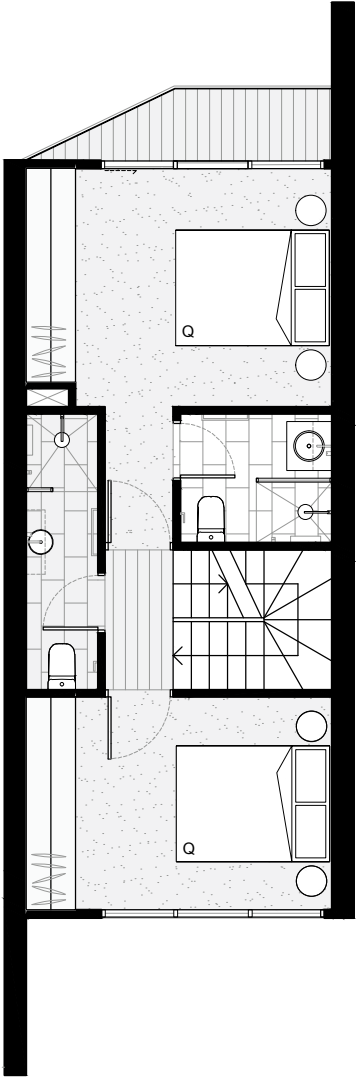
Bedrooms	3
Bathrooms	2
Car Park	1
Total Home Area	179m ²
Ground Floor External	7m ²
Car Park Area	Inc.



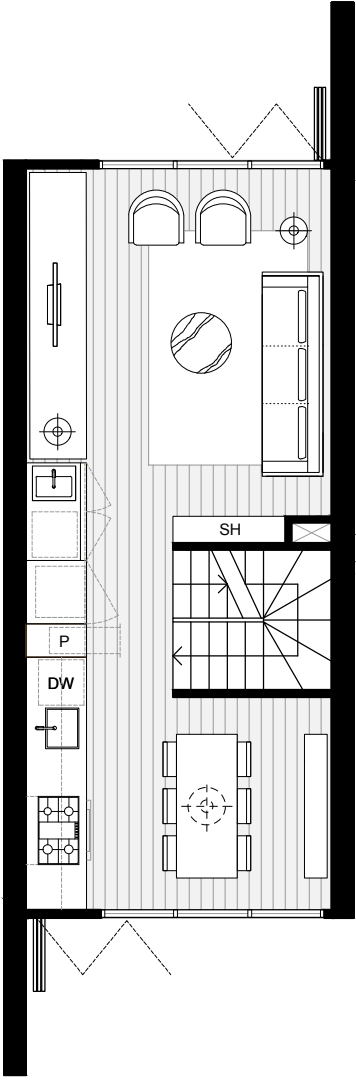
GROUND FLOOR



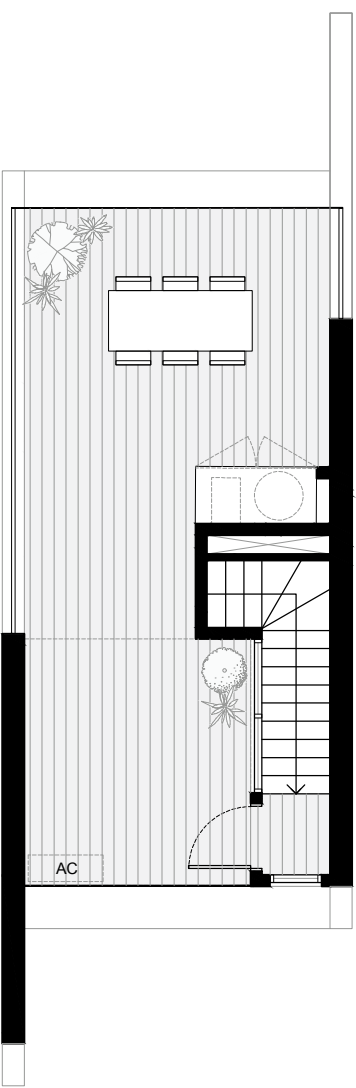
LEVEL 1



LEVEL 2



ROOFTOP TERRACE



Disclaimer: This floor plan has been prepared for marketing purposes only. All descriptions, dimensions, depictions and other details in this floor plate may not be to scale and may vary from the property as built. Your attention is drawn to the special conditions of the contract for sale of land. No third party has any authority to make or give any representation or warranty in relation to the property unless the representation or warranty is confirmed by the vendor and included in the contract for sale of land. The furniture displayed is not included as part of the sale.

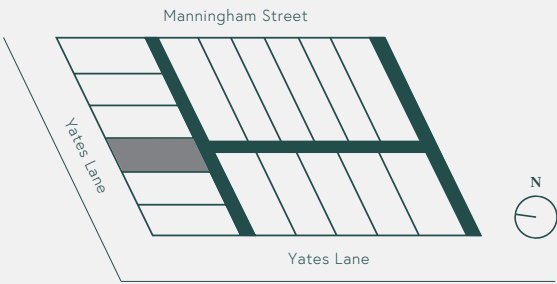




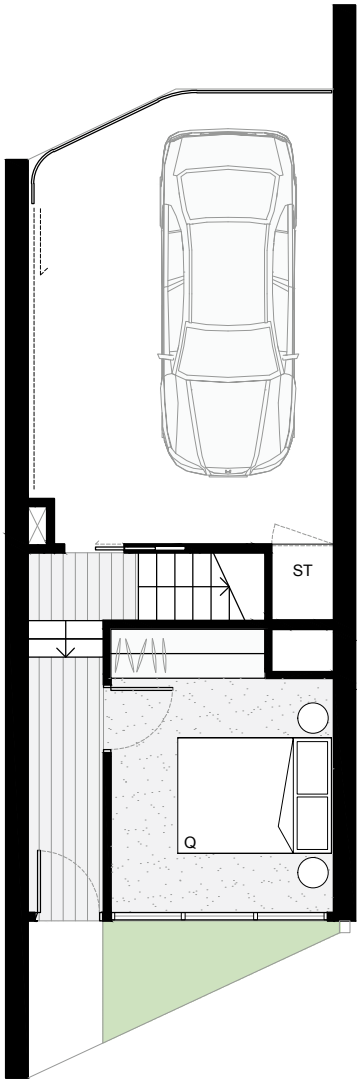
MANNINGHAM STREET
PARKVILLE

Home 10

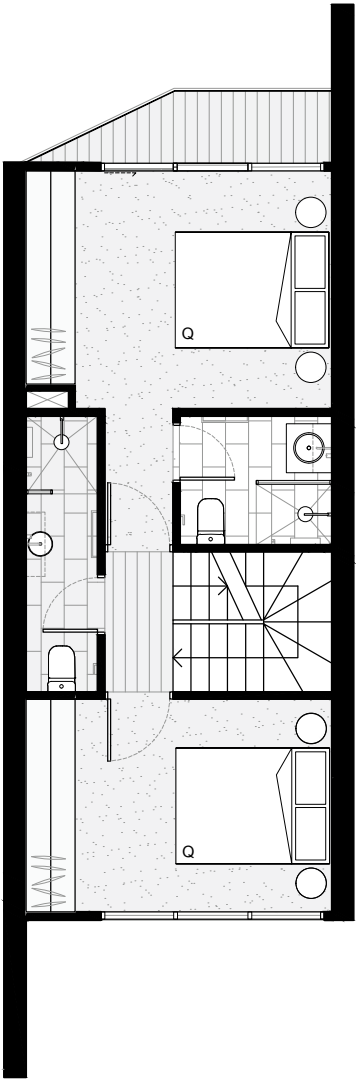
Bedrooms	3
Bathrooms	2
Car Park	1
Total Home Area	179m ²
Ground Floor External	7m ²
Car Park Area	Inc.



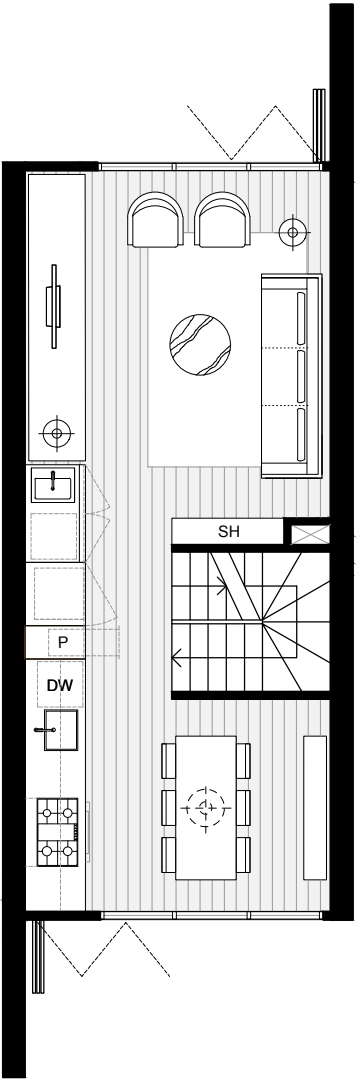
GROUND FLOOR



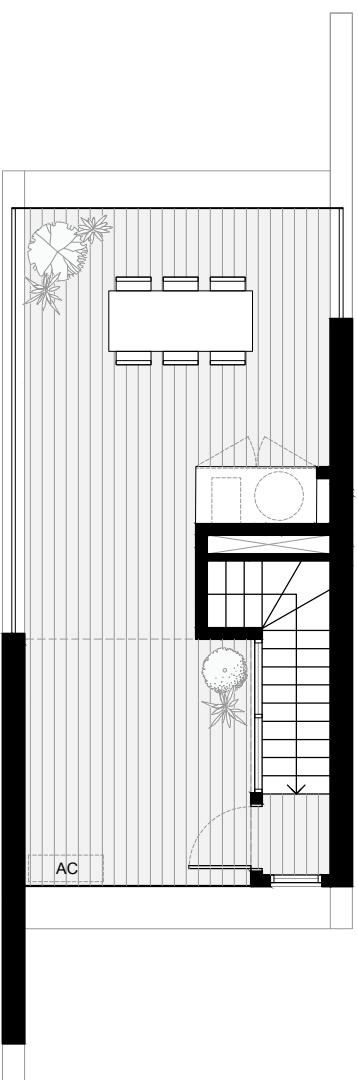
LEVEL 1



LEVEL 2



ROOFTOP TERRACE



Disclaimer: This floor plan has been prepared for marketing purposes only. All descriptions, dimensions, depictions and other details in this floor plate may not be to scale and may vary from the property as built. Your attention is drawn to the special conditions of the contract for sale of land. No third party has any authority to make or give any representation or warranty in relation to the property unless the representation or warranty is confirmed by the vendor and included in the contract for sale of land. The furniture displayed is not included as part of the sale.

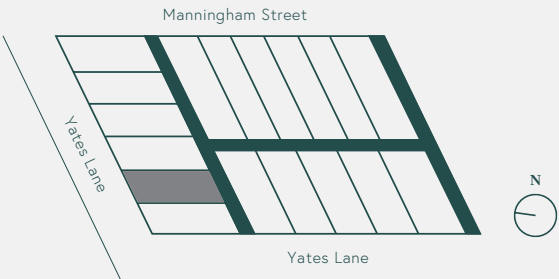




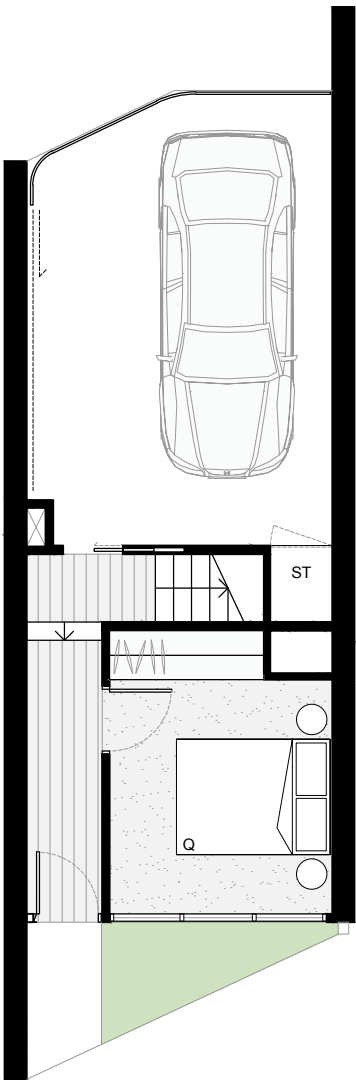
MANNINGHAM STREET
PARKVILLE

Home 11

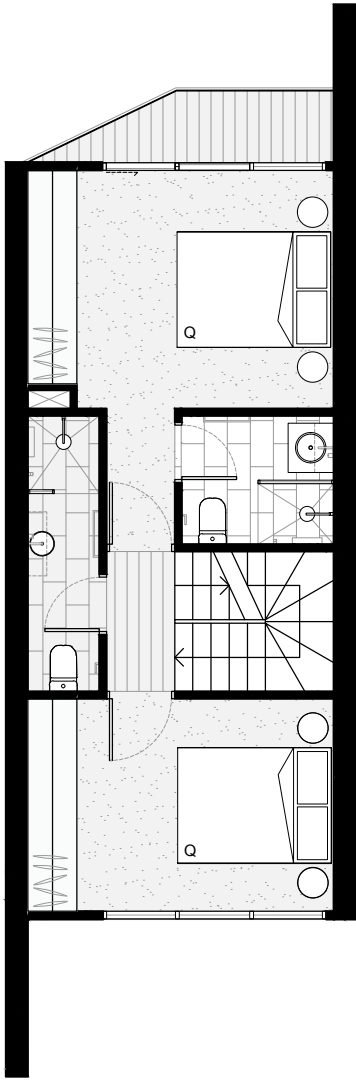
Bedrooms	3
Bathrooms	2
Car Park	1
Total Home Area	179m ²
Ground Floor External	7m ²
Car Park Area	Inc.



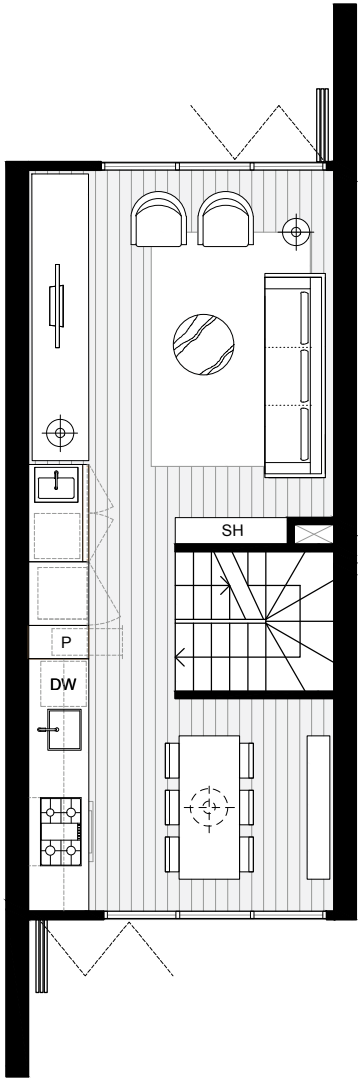
GROUND FLOOR



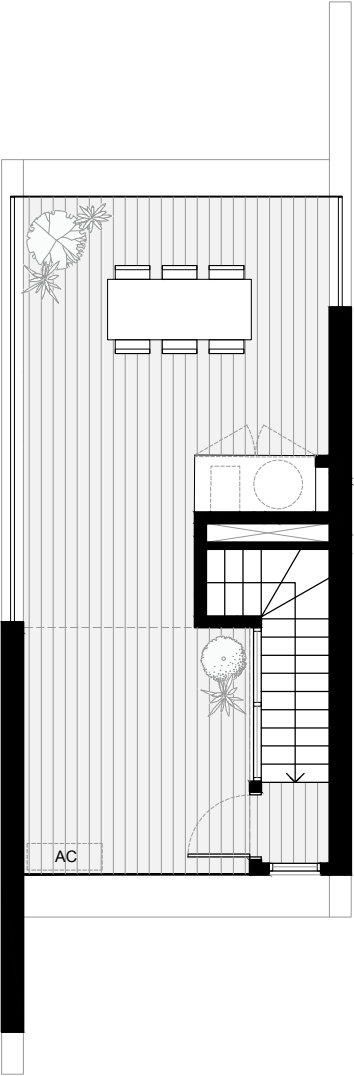
LEVEL 1



LEVEL 2



ROOFTOP TERRACE



Disclaimer: This floor plan has been prepared for marketing purposes only. All descriptions, dimensions, depictions and other details in this floor plate may not be to scale and may vary from the property as built. Your attention is drawn to the special conditions of the contract for sale of land. No third party has any authority to make or give any representation or warranty in relation to the property unless the representation or warranty is confirmed by the vendor and included in the contract for sale of land. The furniture displayed is not included as part of the sale.

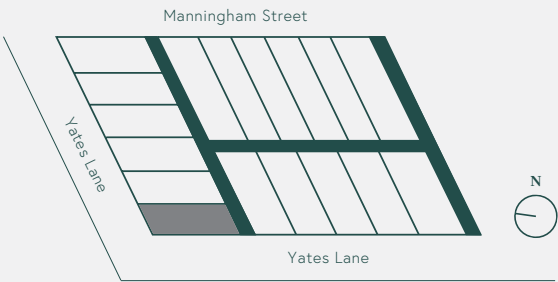




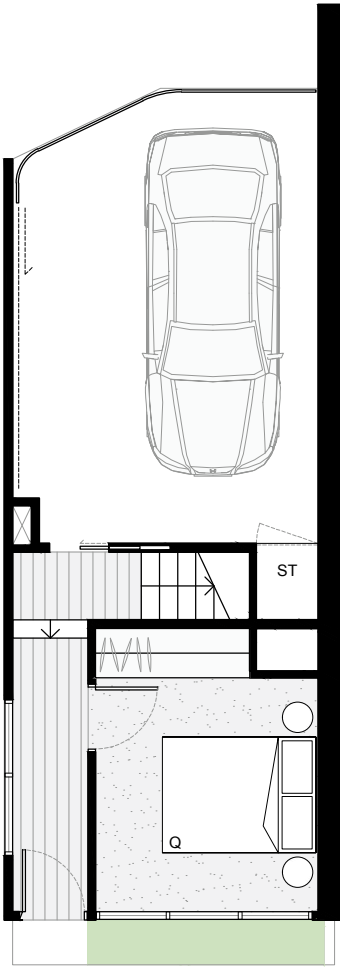
MANNINGHAM STREET
PARKVILLE

Home 12

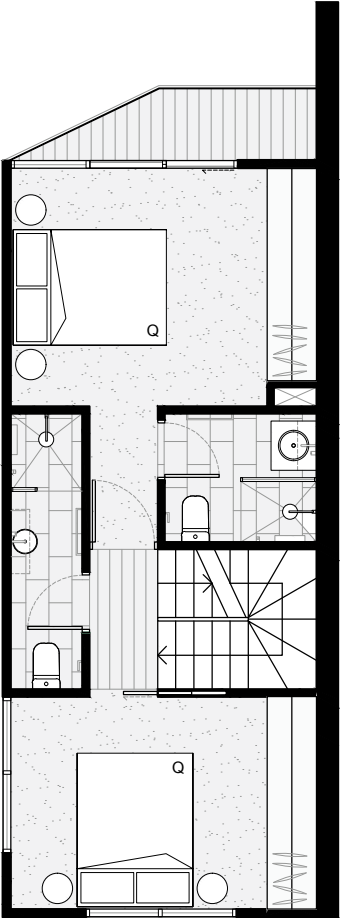
Bedrooms	3
Bathrooms	2
Car Park	1
Total Home Area	176m ²
Ground Floor External	2m ²
Car Park Area	Inc.



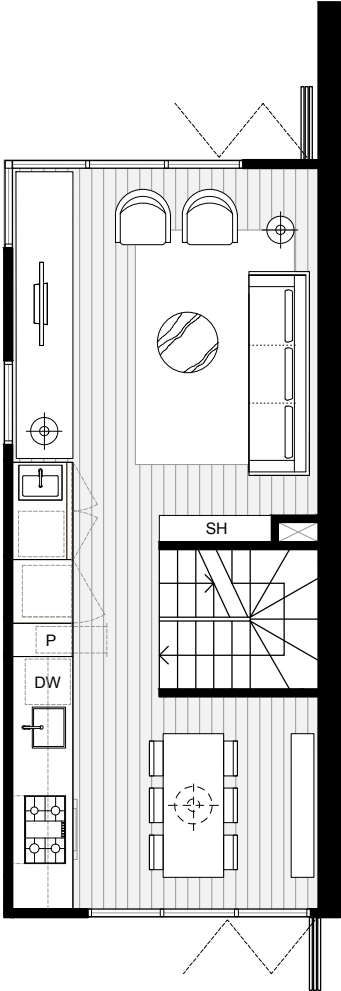
GROUND FLOOR



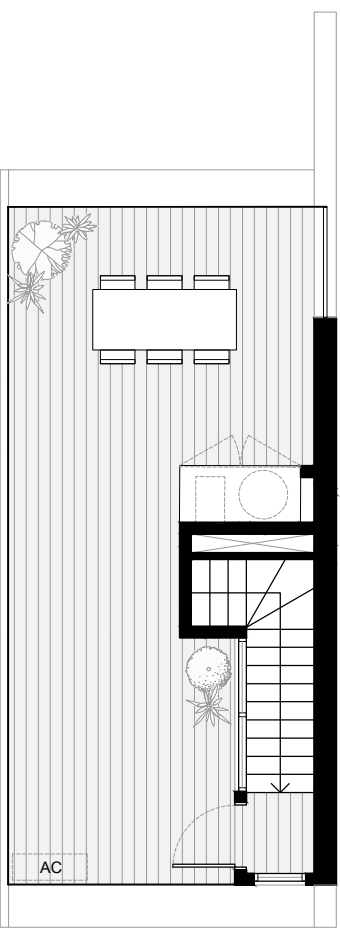
LEVEL 1



LEVEL 2



ROOFTOP TERRACE



Disclaimer: This floor plan has been prepared for marketing purposes only. All descriptions, dimensions, depictions and other details in this floor plate may not be to scale and may vary from the property as built. Your attention is drawn to the special conditions of the contract for sale of land. No third party has any authority to make or give any representation or warranty in relation to the property unless the representation or warranty is confirmed by the vendor and included in the contract for sale of land. The furniture displayed is not included as part of the sale.

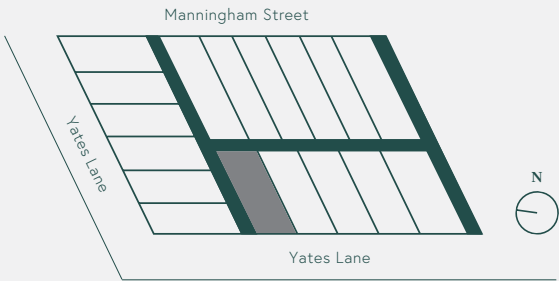




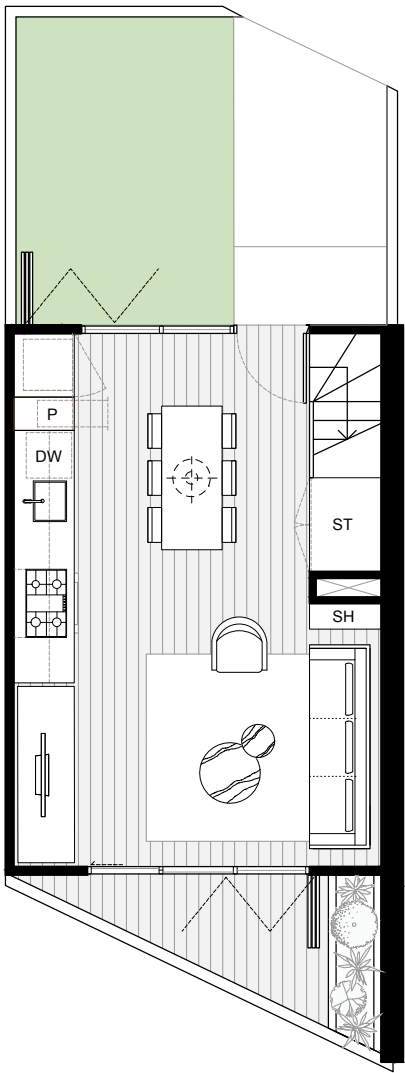
MANNINGHAM STREET
PARKVILLE

Home 13

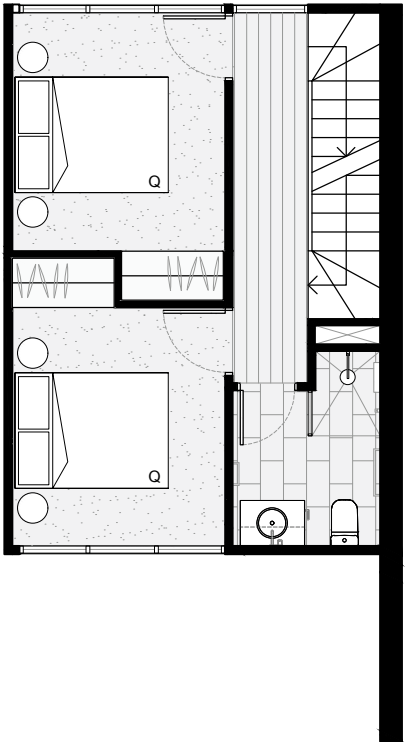
Bedrooms	3
Bathrooms	2
Car Park	1
Total Home Area	151m ²
Ground Floor External	27m ²
Car Park Area	14m ²



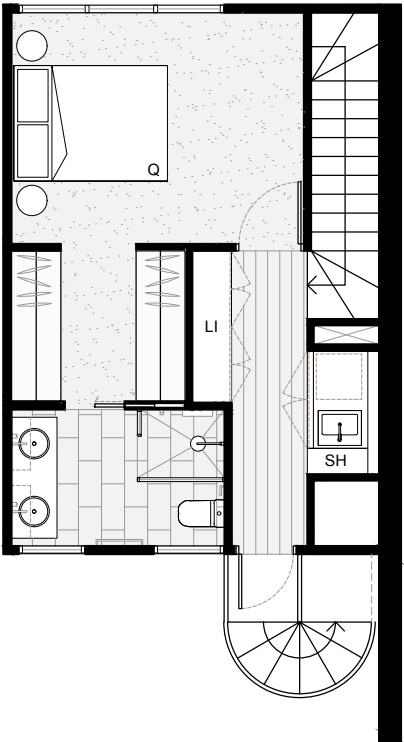
GROUND FLOOR



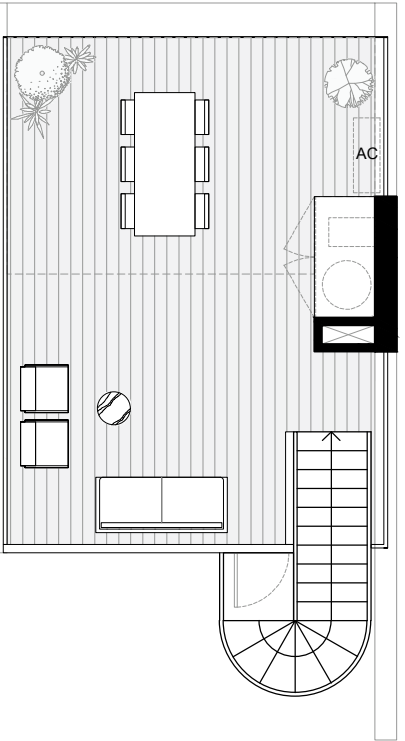
LEVEL 1



LEVEL 2



ROOFTOP TERRACE



Disclaimer: This floor plan has been prepared for marketing purposes only. All descriptions, dimensions, depictions and other details in this floor plate may not be to scale and may vary from the property as built. Your attention is drawn to the special conditions of the contract for sale of land. No third party has any authority to make or give any representation or warranty in relation to the property unless the representation or warranty is confirmed by the vendor and included in the contract for sale of land. The furniture displayed is not included as part of the sale.

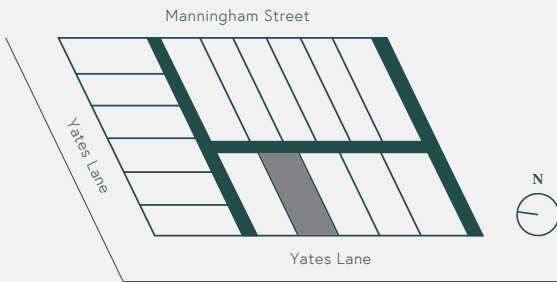




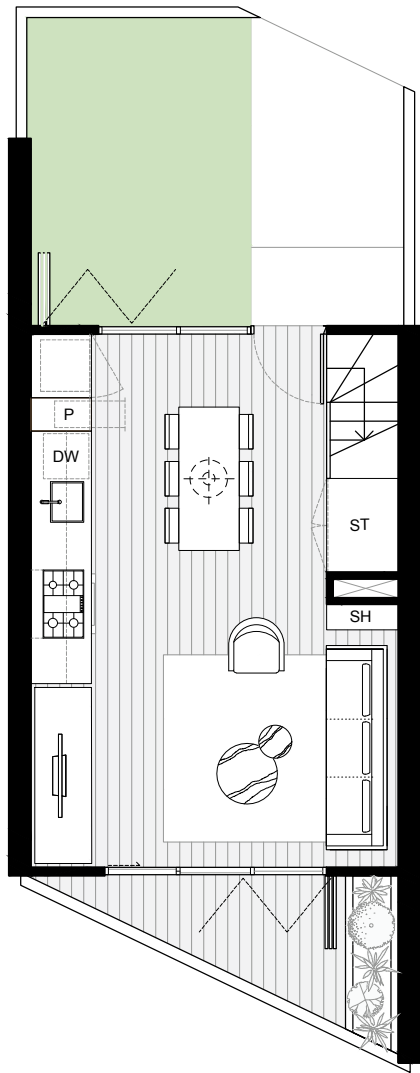
MANNINGHAM STREET
PARKVILLE

Home 14

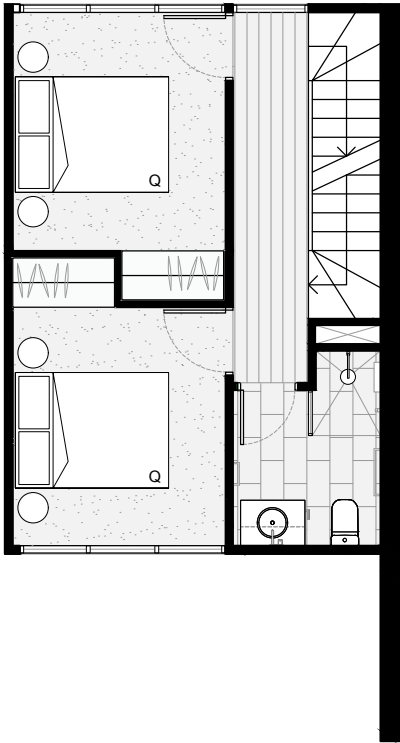
Bedrooms	3
Bathrooms	2
Car Park	2
Total Home Area	154m ²
Ground Floor External	27m ²
Car Park Area	29m ²



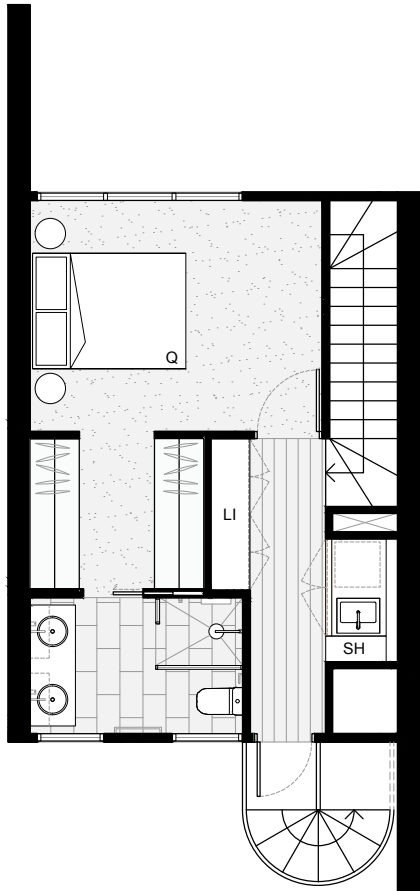
GROUND FLOOR



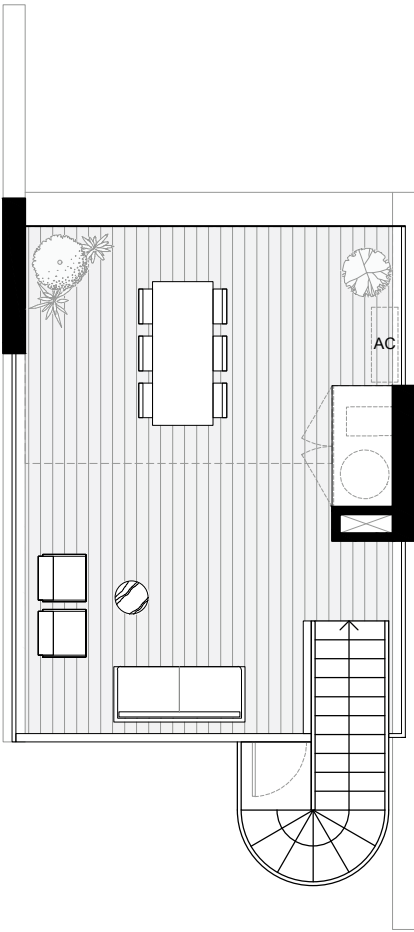
LEVEL 1



LEVEL 2



ROOFTOP TERRACE



Disclaimer: This floor plan has been prepared for marketing purposes only. All descriptions, dimensions, depictions and other details in this floor plate may not be to scale and may vary from the property as built. Your attention is drawn to the special conditions of the contract for sale of land. No third party has any authority to make or give any representation or warranty in relation to the property unless the representation or warranty is confirmed by the vendor and included in the contract for sale of land. The furniture displayed is not included as part of the sale.

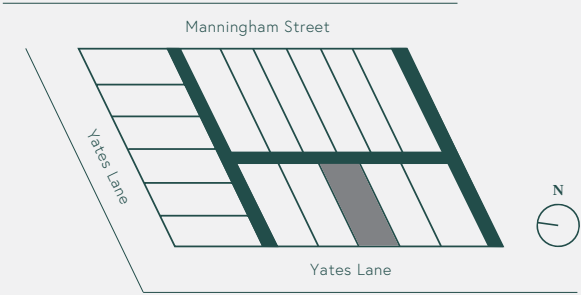




MANNINGHAM STREET
PARKVILLE

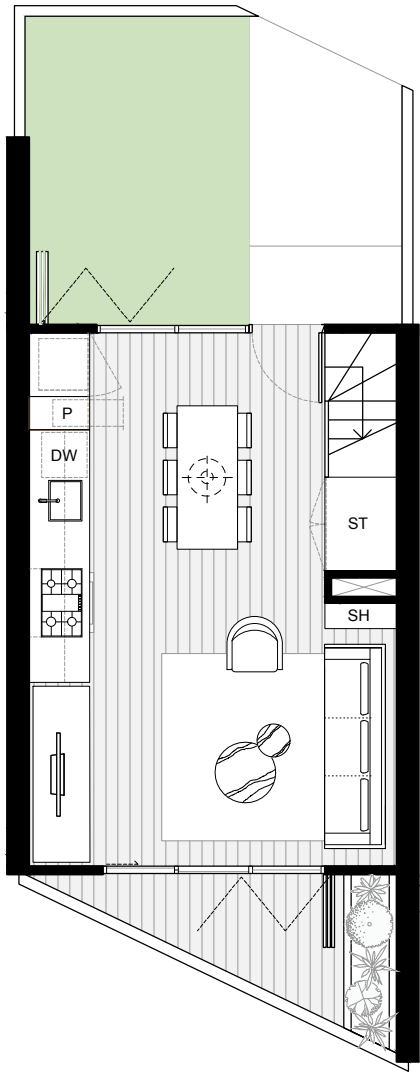
Home 15

Bedrooms	3
Bathrooms	2
Car Park	2
Total Home Area	154m ²
Ground Floor External	27m ²
Car Park Area	29m ²

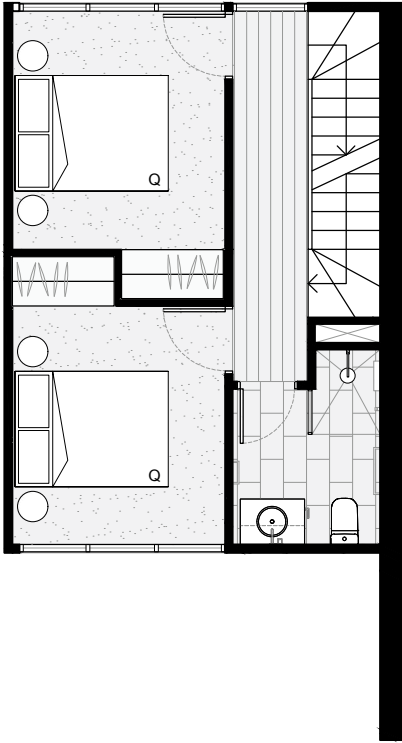


Disclaimer: This floor plan has been prepared for marketing purposes only. All descriptions, dimensions, depictions and other details in this floor plate may not be to scale and may vary from the property as built. Your attention is drawn to the special conditions of the contract for sale of land. No third party has any authority to make or give any representation or warranty in relation to the property unless the representation or warranty is confirmed by the vendor and included in the contract for sale of land. The furniture displayed is not included as part of the sale.

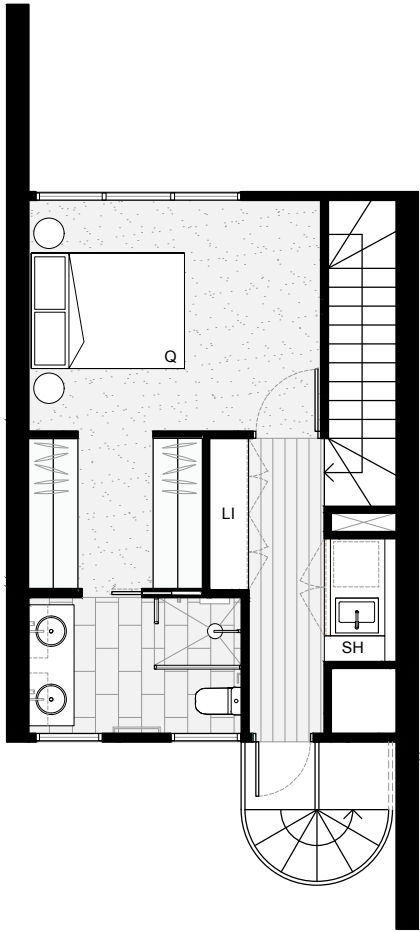
GROUND FLOOR



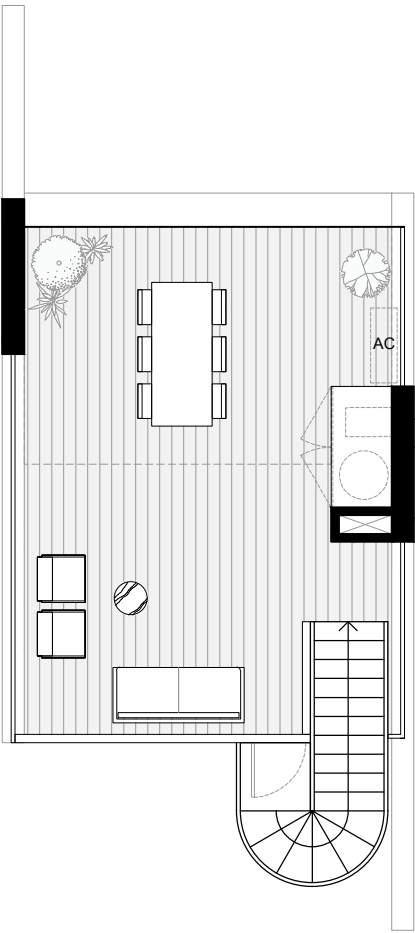
LEVEL 1



LEVEL 2



ROOFTOP TERRACE

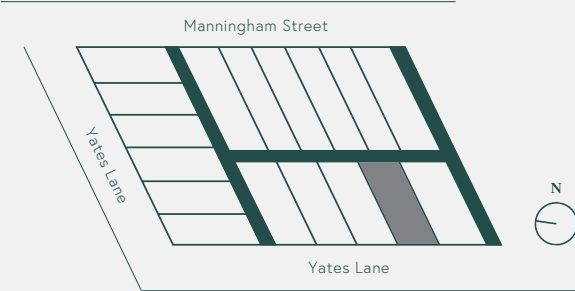




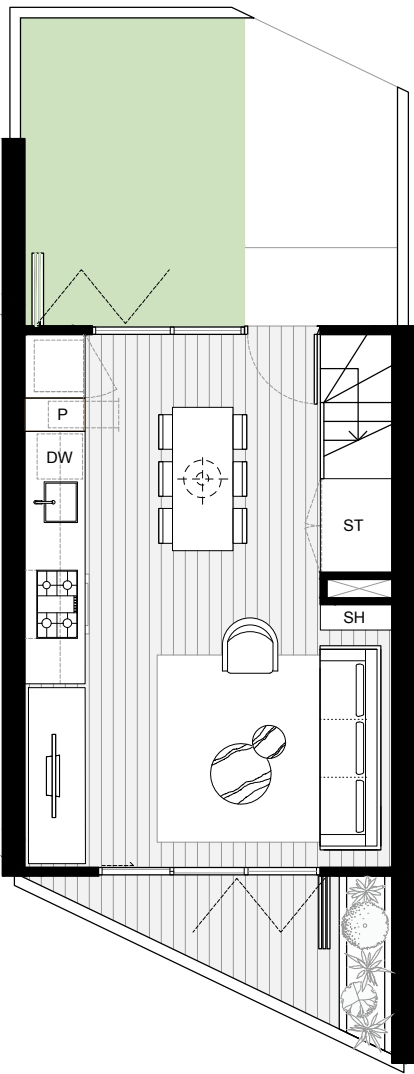
MANNINGHAM STREET
PARKVILLE

Home 16

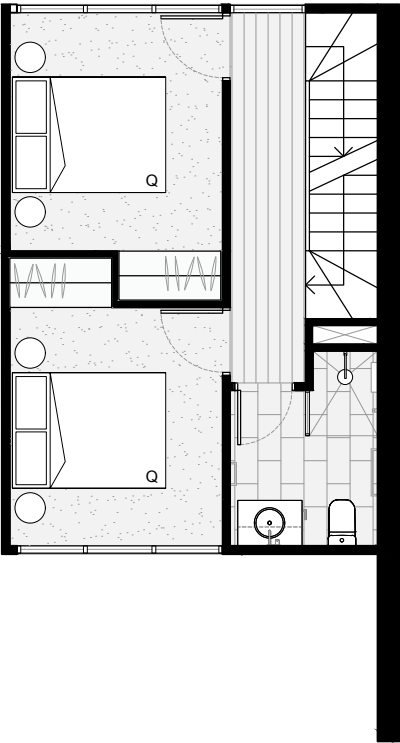
Bedrooms	3
Bathrooms	2
Car Park	1
Total Home Area	154m ²
Ground Floor External	27m ²
Car Park Area	14m ²



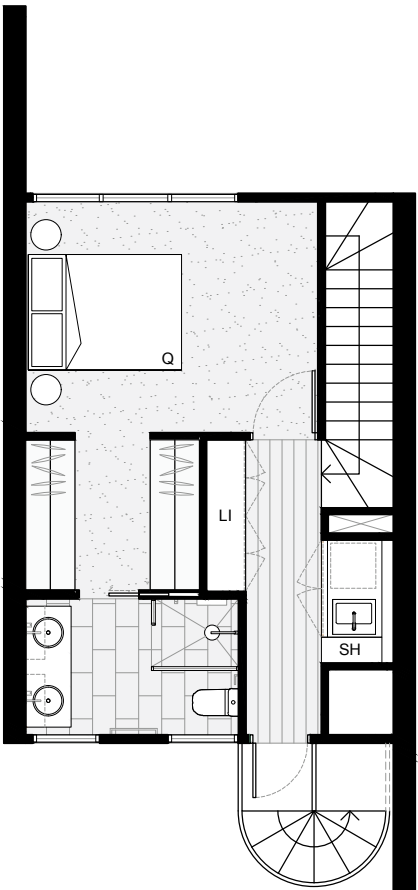
GROUND FLOOR



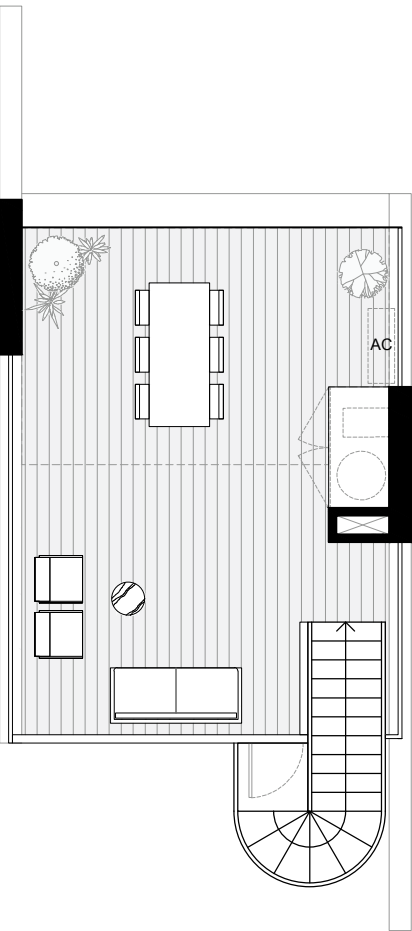
LEVEL 1



LEVEL 2



ROOFTOP TERRACE



Disclaimer: This floor plan has been prepared for marketing purposes only. All descriptions, dimensions, depictions and other details in this floor plate may not be to scale and may vary from the property as built. Your attention is drawn to the special conditions of the contract for sale of land. No third party has any authority to make or give any representation or warranty in relation to the property unless the representation or warranty is confirmed by the vendor and included in the contract for sale of land. The furniture displayed is not included as part of the sale.

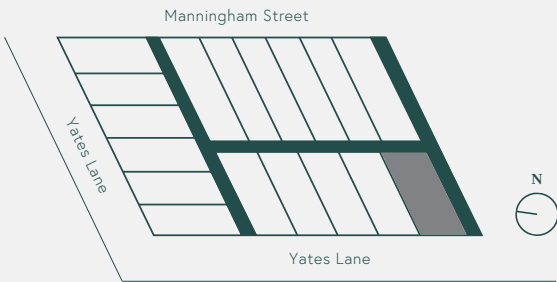




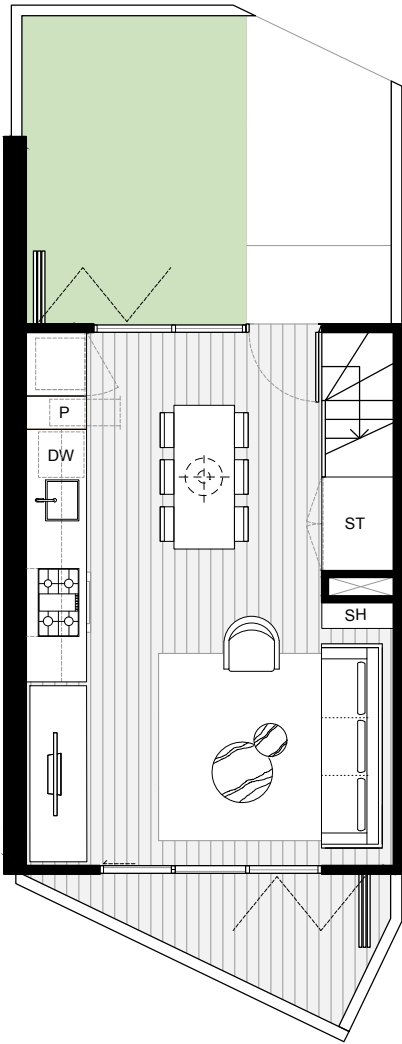
MANNINGHAM STREET
PARKVILLE

Home 17

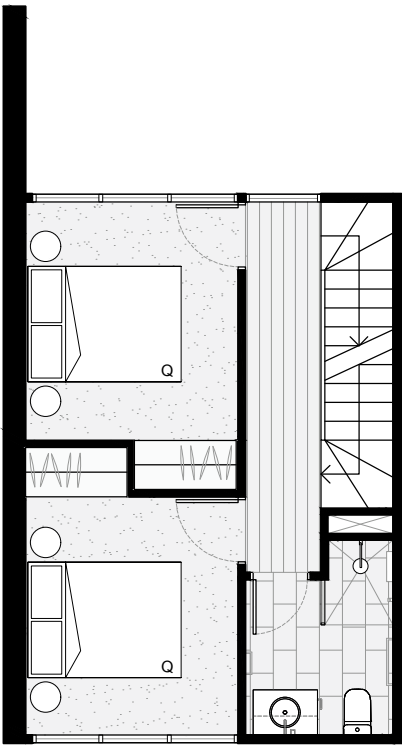
Bedrooms	3
Bathrooms	2
Car Park	1
Total Home Area	146m ²
Ground Floor External	26m ²
Car Park Area	14m ²



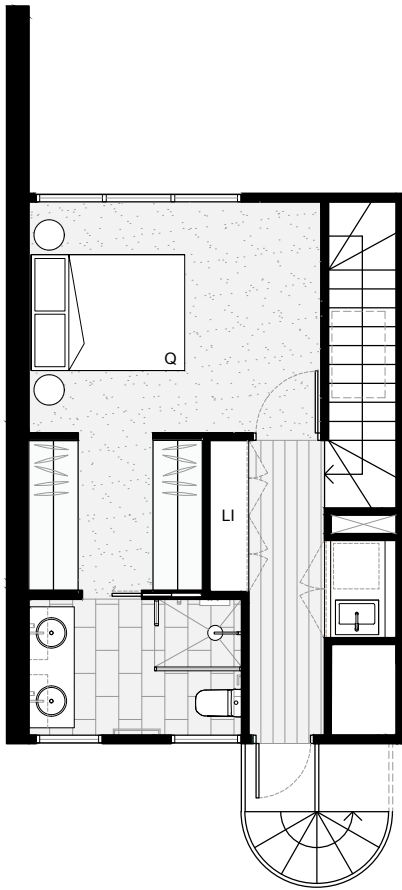
GROUND FLOOR



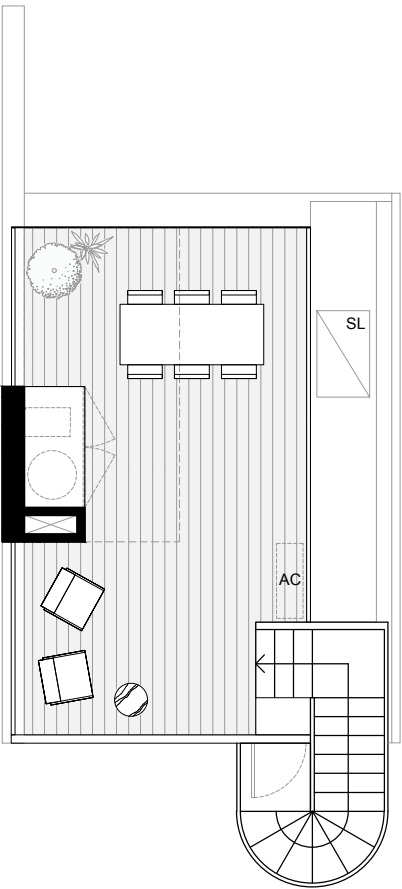
LEVEL 1



LEVEL 2



ROOFTOP TERRACE



Disclaimer: This floor plan has been prepared for marketing purposes only. All descriptions, dimensions, depictions and other details in this floor plate may not be to scale and may vary from the property as built. Your attention is drawn to the special conditions of the contract for sale of land. No third party has any authority to make or give any representation or warranty in relation to the property unless the representation or warranty is confirmed by the vendor and included in the contract for sale of land. The furniture displayed is not included as part of the sale.



