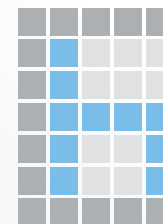




Boutique Development

21 Glen Rd Ashburton, Melbourne, Victoria 3147

A Quality Boutique Development Built By:



coronahomes

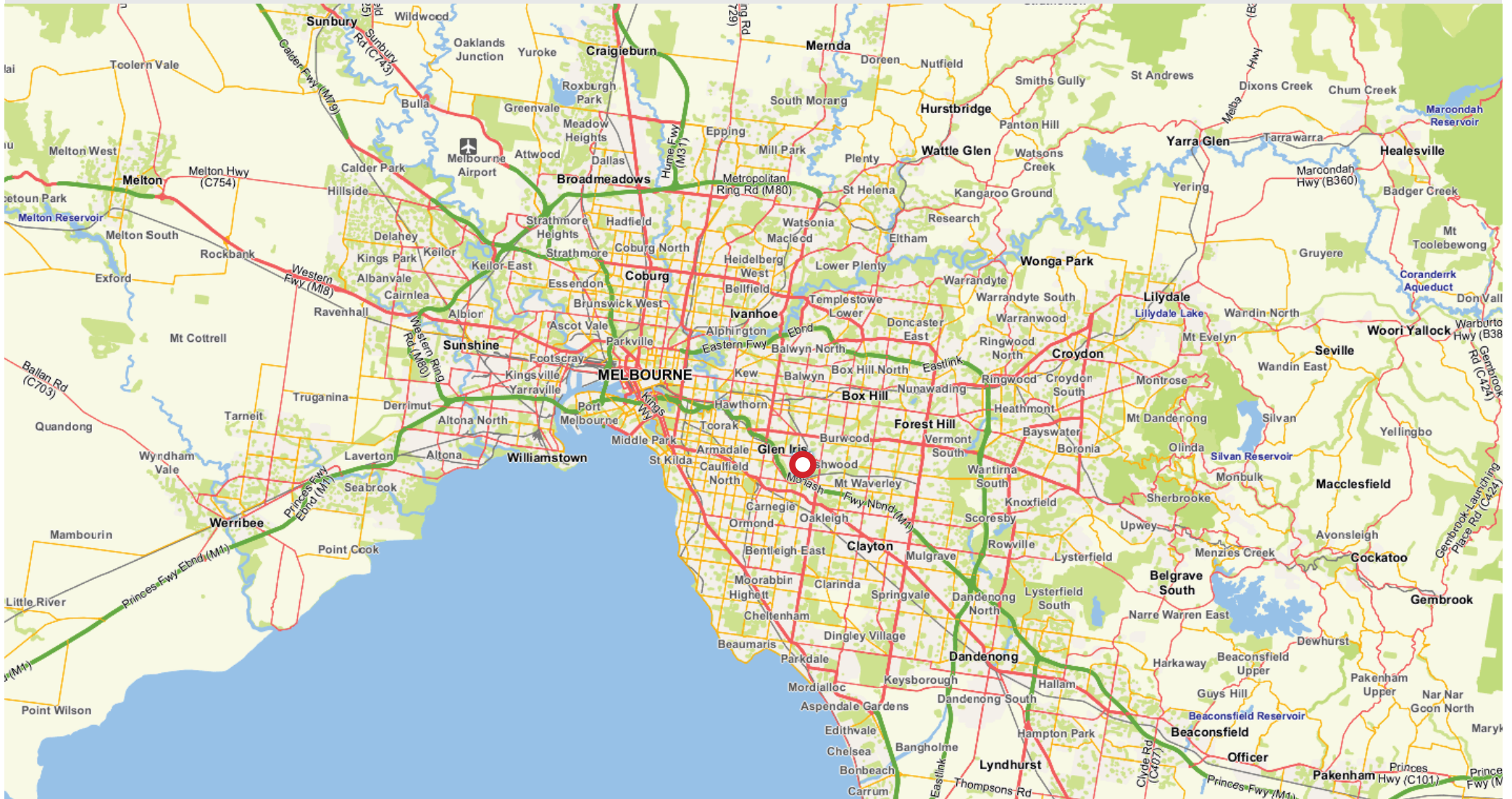


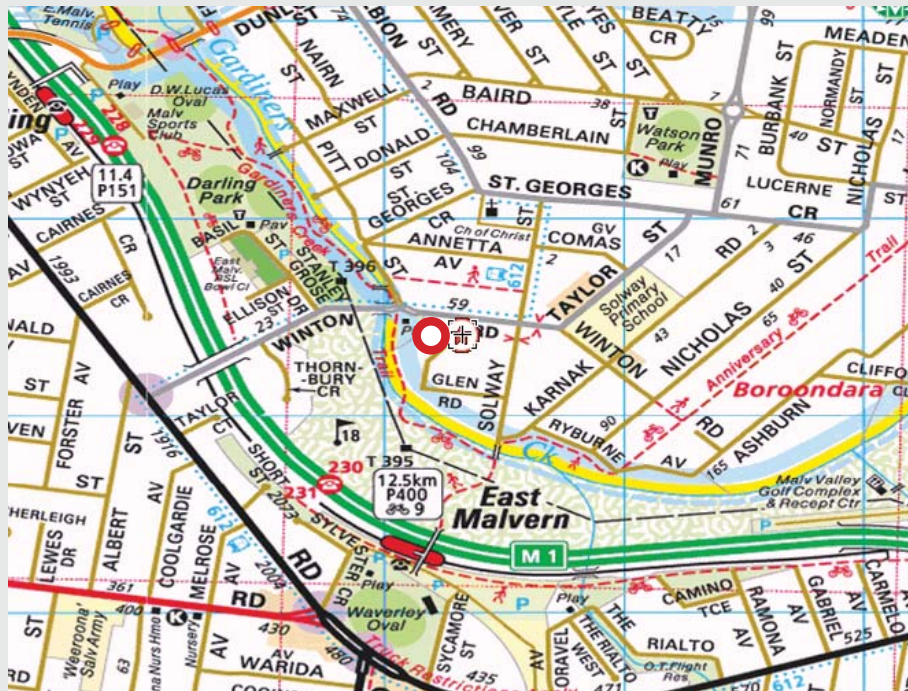
Boutique Development

Contents

1
2
3
4

Location Maps
Site Plan
Floor Plans
3D Representation





The development at 21 Glen Road Ashburton is situated well within close proximity to schools, public transport, freeway, parks, reserves and the CBD, making it the ideal location for work, rest and play.



TOWNHOUSE 1

Ground Floor Area: 152.93m²

First Floor Area: 92.33m²

Cinema/Billiard: 71.79m²

Total Living: 317.1m² (34.1sq)

Basement Garage: 61.1m²

Total Building: 378.2m² (40.6sq)

TOWNHOUSE 2

Ground Floor Area: 152.90m²

First Floor Area: 93.55m²

Cinema/Billiard: 71.79m²

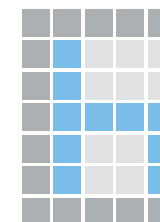
Total Living: 318.25m² (34.2sq)

Basement Garage: 61.1m²

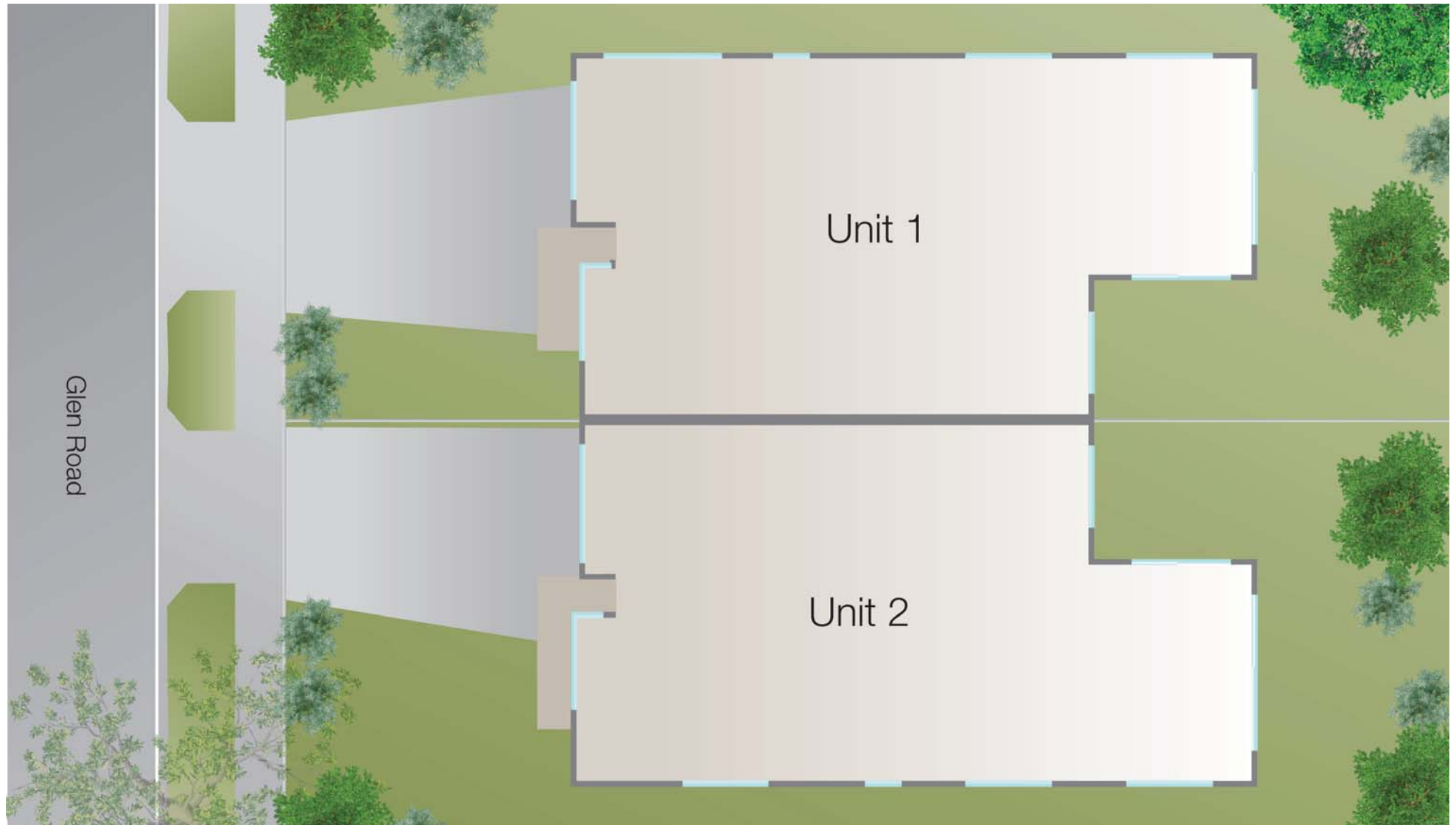
Total Building: 379.35m² (40.8sq)

21 Glen Rd Ashburton

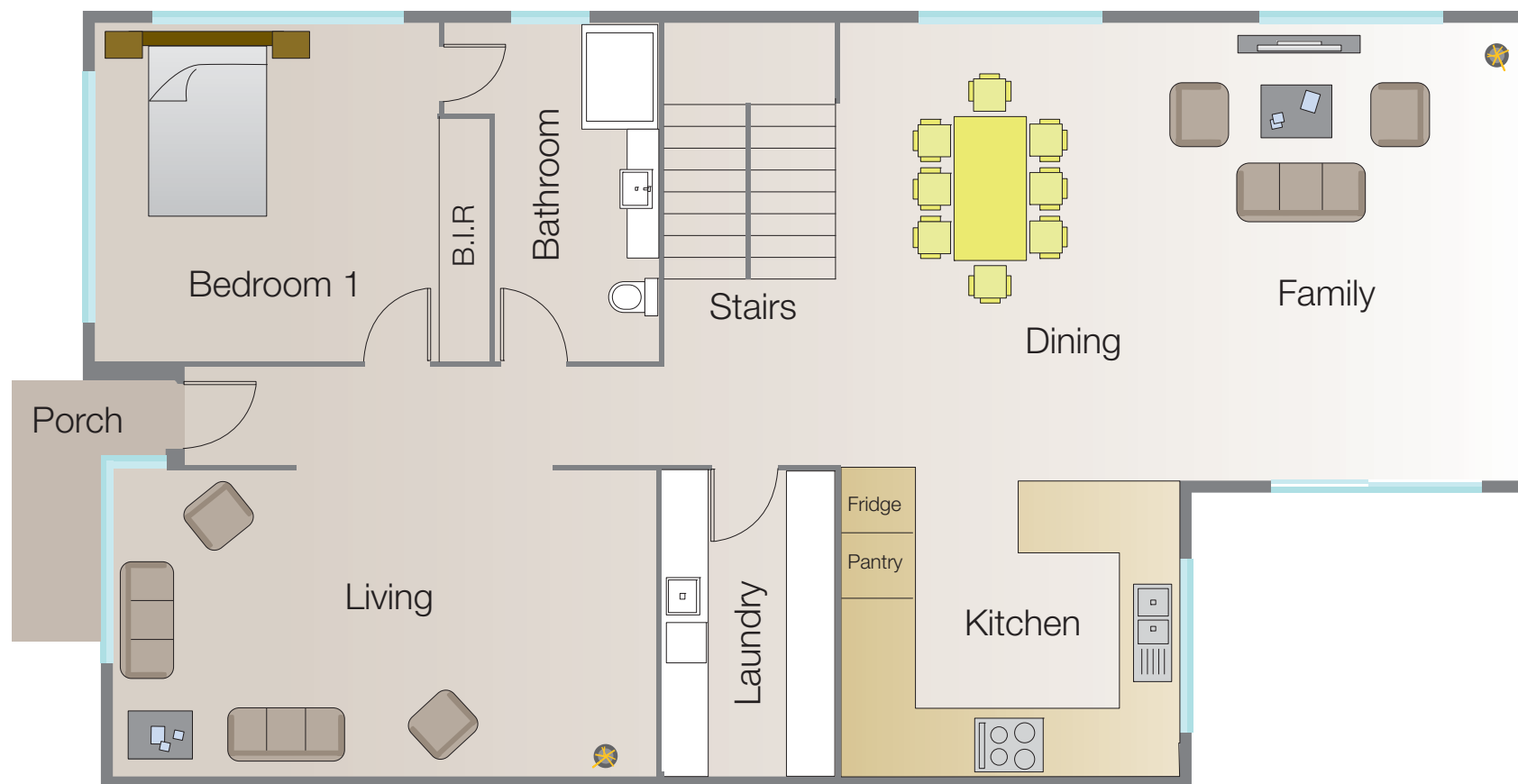
Boutique Development | coronahomes



Site Plan

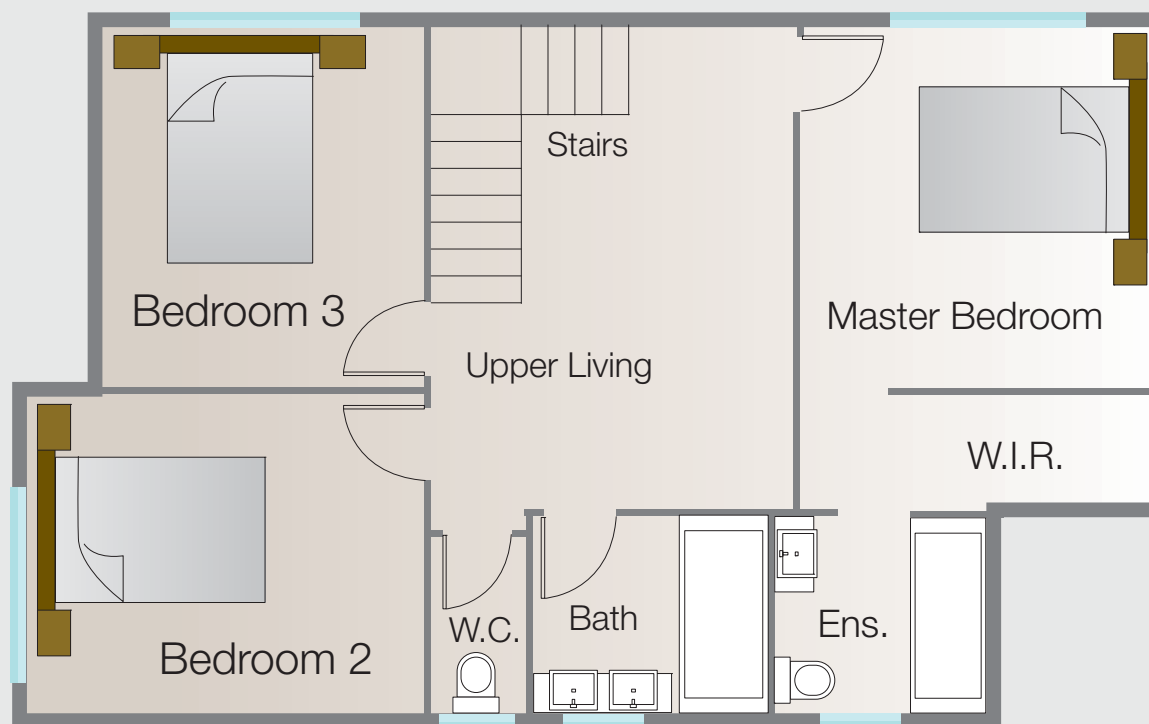


Ground Floor Area: 152.93m²



Ground Floor

First Floor Area: 92.33m²

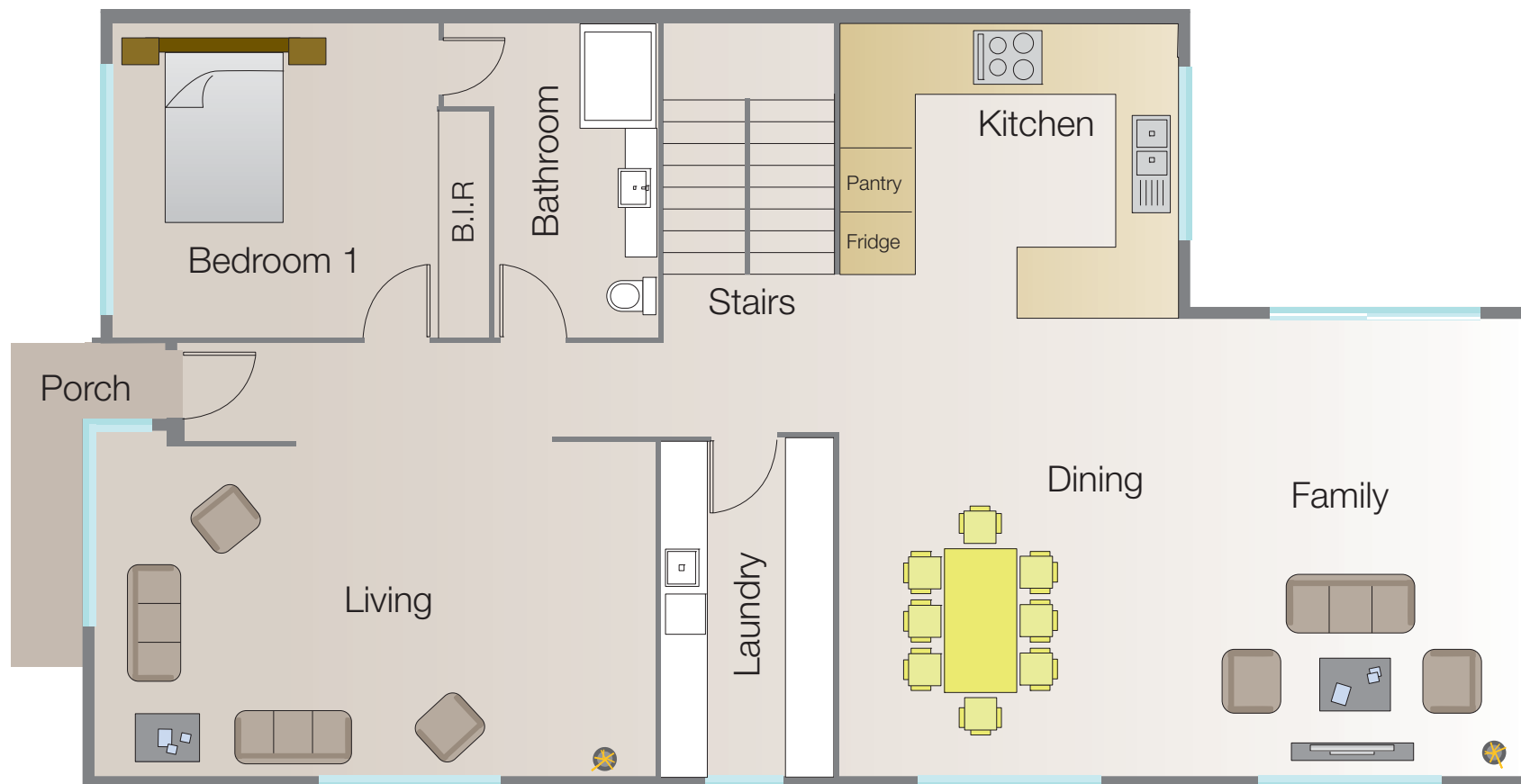


PLEASE NOTE: ALL PLANS AND 3D IMAGERY ARE FOR ILLUSTRATION PURPOSES ONLY.

First Floor

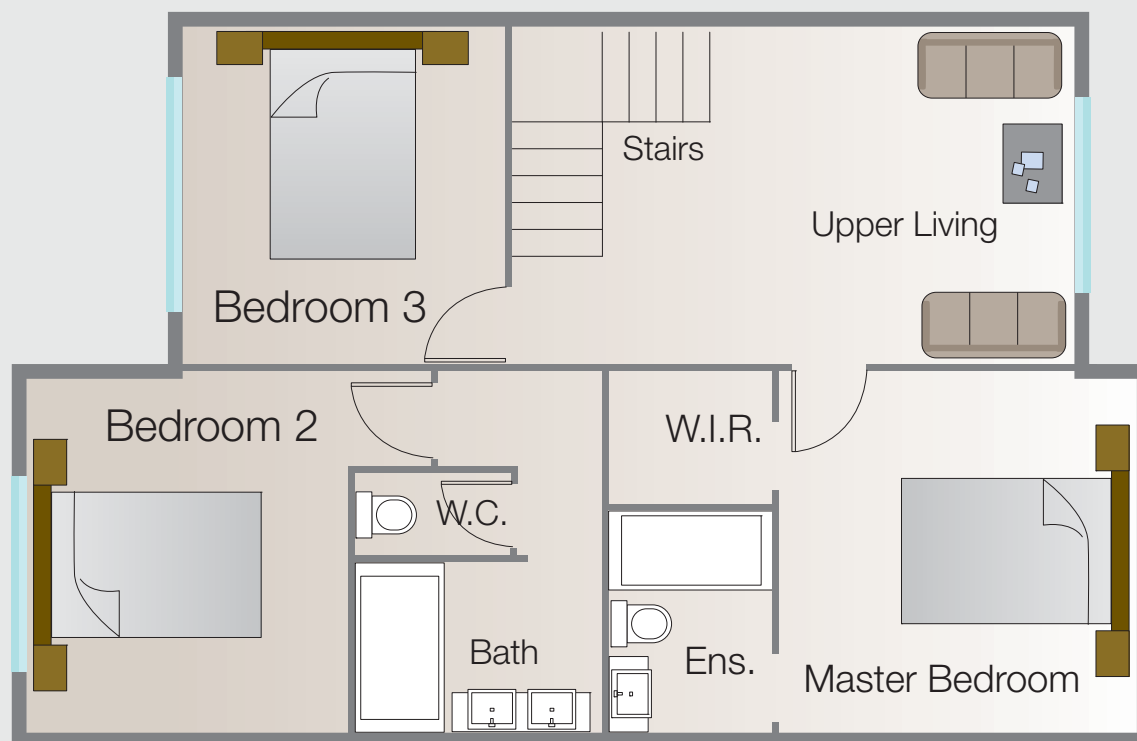
Floor Plans Townhouse 2

Ground Floor Area: 152.90m²



Ground Floor

First Floor Area: 93.55m²



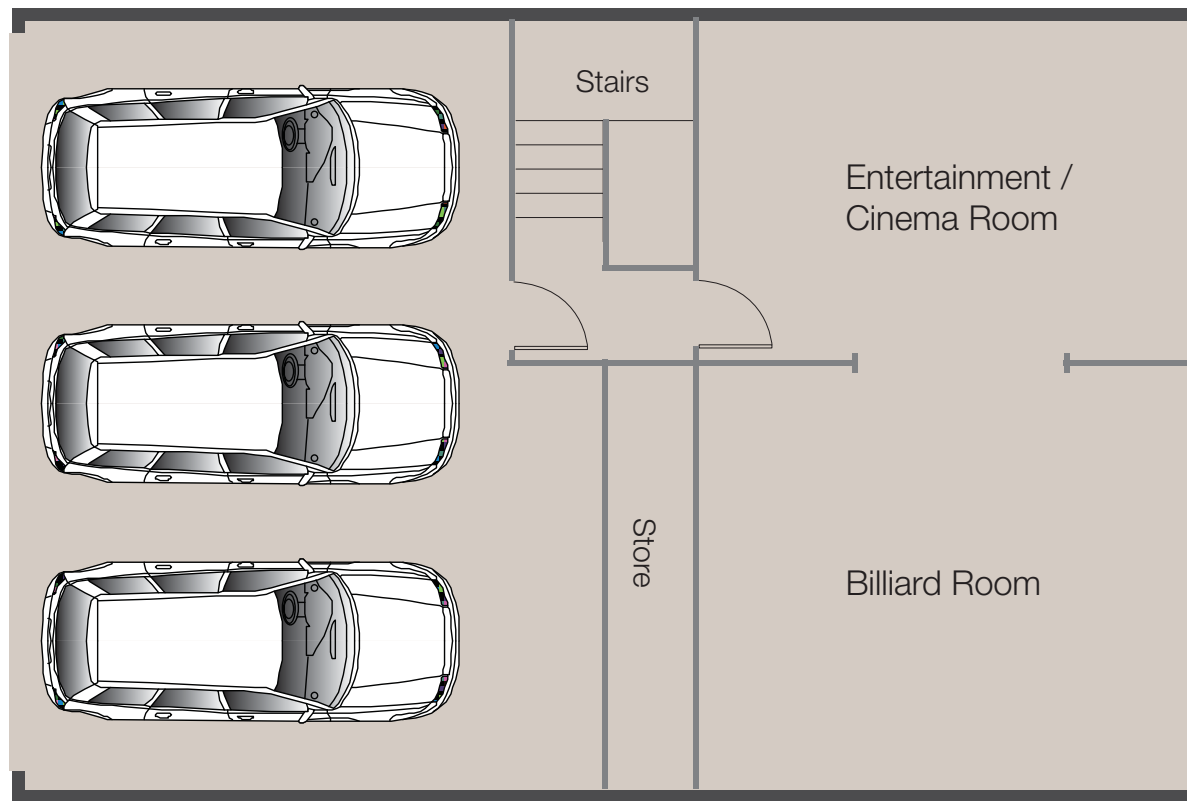
PLEASE NOTE: ALL PLANS AND 3D IMAGERY ARE FOR ILLUSTRATION PURPOSES ONLY.

First Floor

Basement Garage Townhouse 1

Cinema/Billiard Area: 71.79m²

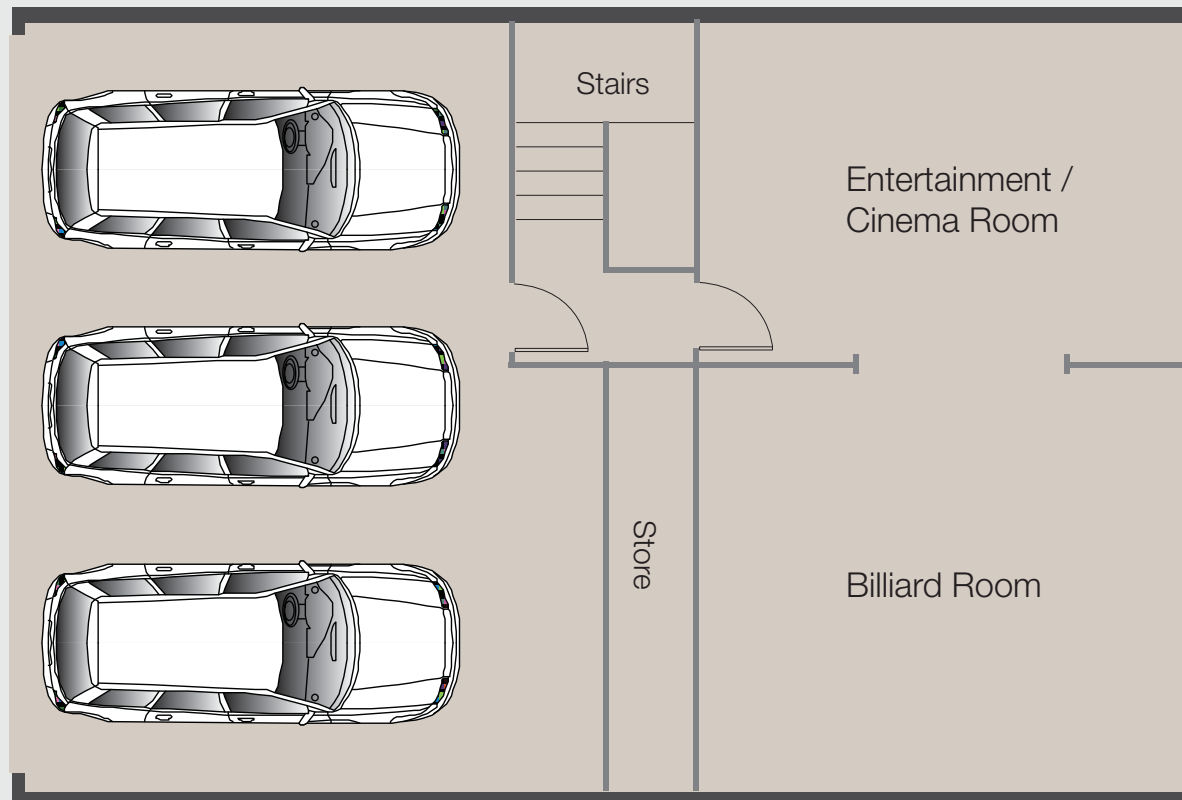
Basement Garage Area: 61.1m²



Basement Garage Townhouse 2

Cinema/Billiard Area: 71.79m²

Basement Garage Area: 61.1m²



PLEASE NOTE: ALL PLANS AND 3D IMAGERY ARE FOR ILLUSTRATION PURPOSES ONLY.

4

3D Representation

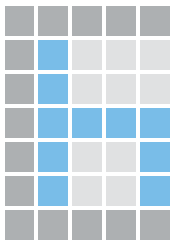
Townhouse 1 and 2



Townhouse 1 and 2



www.coronahomes.com.au



coronahomes

Corona Homes

A: 7 St. Finbars Crescent, Brighton East VIC 3187

Fax: 03 9593 1258

Anna Petryshyn | T: 0409 447 518

Darek Petryshyn | T: 0412 547 518

Email: coronahomes@bigpond.com